

2015
Product Catalog
Ürün Kataloğu

KONPAR



DEĞİŞİME ÖNCÜLÜK EDİYORUZ





Hayat yolunda her zaman sizinleyiz

Biz tam 19 yıldır, 116 uzman personel ile en zor şartlara dayanıklı, uzun ömüre sahip, birinci sınıf yedek parça üretimi için çalıştık. Sizin ekonominizi en az sizin kadar düşündük. Konpar'ı farklı kılan da tam olarak işte bu. Çünkü biz bu yollara beraber çıktık.



Because we have set off together



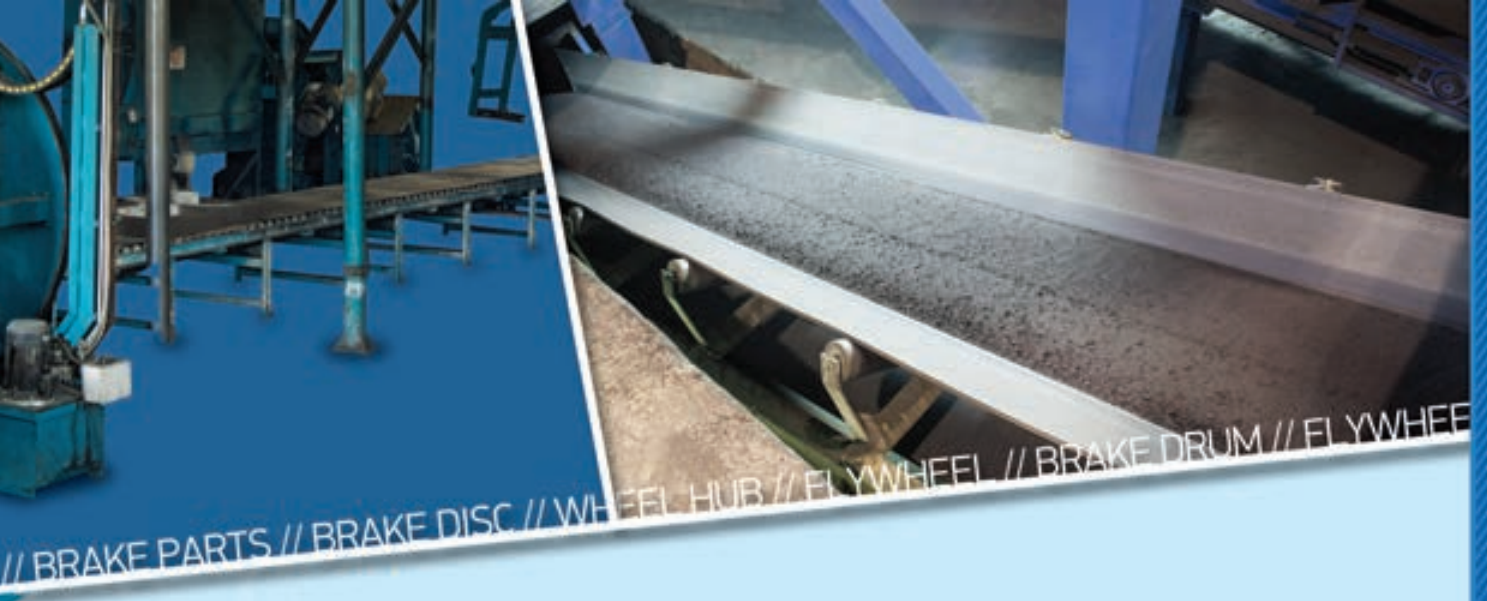


About Us

KONPAR was established in 1996 and follows the latest technology for the market under 30000m² area in Konya. Therefore we globally take place in global market as well as domestic market. When it comes to our facilities; We are at your service with different analyse devices , automatic moulding machine, no-bake moulding line (chemically bonded sand systems), Aluminium low pressure casting, vertical and horizontal machining centres. As being one of the leading companies, we have been manufacturing parts need engineering and designation such as train brake disc, axle boxes, pivot bearings and brake shoes for railway wagons, cylinder heads, aluminium flywheel housing and brake discs, flywheels, brake drums, wheel hubs, caliper repair kits, brake disc pads, wheel bolts and air springs for all kind of trucks, heavy vehicles, buses and trailers since 1996 in Konya/TURKIYE.

Since establishment of the Company, we have obtained a respected position and reputation in the market. Konpar has been certified by ISO 9001:2008 Quality Management System Certificate and the products are guaranteed against material defects. We aim to have customer satisfaction, punctual delivery, competitive prices and supply the best quality products with our engineering and manufacturing experience.





Hakkımızda

KONPAR; 1996 yılında kurulmuş en son teknolojiyi takip eden ve bunu sektörüne tanıtmada öncülük yapan önder bir firmadır. Firmamız faaliyette bulunduğu sektörde yurtiçinde önder bir firma olduğu gibi dünya piyasalarında da başarıyla hızla yerini almaktadır. Üretim tesislerimizde son teknoloji ürünü olan her türlü analiz cihazı , otomatik kalıplama makinaları, reçineli kalıplama hattı, alüminyum alçak basınç makinası, yatay ve dikey işlem olarak her tür CNC tezgah bulunmaktadır.

Orta tip, ağır araç ve dorseler için KONPAR markası ile fren diski, fren kampanası, volan, volan muhafazası, porya, silindir kapağı, kaliper tamir takımı, disk fren balatası, körük, bijon imalatı ve ihracatı konusunda sektörün önde gelen kuruluşlarından biri olan firmamızda üretimi ve tasarımı mühendislik isteyen parçalar üretilmektedir. Demiryollarında yük ve yolcu vagonlarında kullanılan dingil yatak kutusu (buatagres), boji üst çanak, boji alt göbek, sabo çanğı ve tren fren diski üretimi de yapılmaktadır.

ISO 9001:2008 uluslararası kalite belgesine sahip olan firmamızda üretilen ürünler malzeme ve işçilik hatalarına karşı sigortalıdır. Üretimin her aşamasında müşteri memnuniyetine önem veren KONPAR, müşterilerinin istek ve düşüncelerini kendi bilgi ve deneyimiyle harmanlayıp, yine müşterilerinin istek ve ihtiyaçlarına göre tam zamanında üreterek teslim etmektedir. Bunun yanında firmamız teknolojik yeniliklerden hem müşterilerinin hem de çalışanlarının bilgi edinmelerini sağlayıp bu gelişmeler ışığında ürün portföyünü sürekli artırarak müşterilerine kaliteyi uygun fiyatlarla sunmaya devam etmektedir.





BRAKE DISC // WHEEL HUB // FLYWHEEL // BRAKE DRUM // FLYWHEEL HOUSING // WHEEL BOLT



// BRAKE PARTS // BRAKE DISC // WHEEL HUB // FL YWHEEL // BRAKE DRUM // FL YWHEEL

Our Values

To be a global company about manufacturing automotive and railway parts.

Manufacturing of parts need design and engineering.

Konpar gives importance to customer's satisfaction in every aspect of production process, offering products to meet customer's request and needs, combining it's knowledge and experience.

Değerlerimiz

Otomotiv ve demiryolu parçaları üretiminde global bir firma olmak.

Mühendislik ve tasarım isteyen parçaların üretimini yapmak.

Üretimin her aşamasında müşteri memnuniyetine önem veren KONPAR, müşterilerinin istek ve düşüncelerini kendi bilgi ve deneyimiyle harmanlayıp, yine müşterilerinin istek ve ihtiyaçlarına göre istenilen ürünleri üretmektedir.







KE PARTS // BRAKE DISC // WHEEL HUB // FLYWHEEL // BRAKE DRUM // FLYWHEEL HOU



Product Index

Ürün Fihristi

Wheel Hub

Porya

14-15	Mercedes
15	Man
16	Daf
16-17-18	Volvo
18	Renault
18-19	Iveco
19-20-21	Isuzu
21-22	Bpw
22	Fruehauf

Brake Disc

Fren Diski

24-25-26	Mercedes
26-27-28	Man
28-29-30-31	Renault
31-32-33-34-35	Iveco
35-36	Magirus - Otokar
36	Isuzu
36-37-38-39	Bpw - Saf - Fruehauf
40	Ror - Daf
41	Setra - Scania
42	Volvo - Neoplan
42-43	Bmc - Ford

Flywheel

Volan

46-47-48-49	Mercedes
49-50-51	Man
52	Renault
53-54	Iveco
54-55	Isuzu
55	Daf - Mitsubishi
55-56	Scania
56	Volvo

Brake Drum

Kampana

58-59-60-61	Mercedes
62	Man
63	Renault
64	Iveco - Mitsubishi
65-66-67	Bpw - Saf - Osman Koç
68	Otoyol - York - Daf
69	Setra
70	Scania
71-72	Volvo
73	Neoplan
73-74-75	Fatih - Bmc
76	Ford
76-77	Dodge Chrysler
77	Sanos - Hova - Nissan

Small Brake Drum

Küçük Kampana

78	Fiat Iveco
79	Magirus - Otokar
80	Peugeot
80-81-82-84	Isuzu
82	Toyota
82-83	Mitsubishi
83	Bmc
84	Hyundai - Ndr
85	Mazda - Daihatsu
	Hashimbus - Toyota

WHEEL HUBS

Porya



MERCEDES

NP-20104

V8 - 0303 YERLİ ÇEKİCİ PORYA



OEM

3853560601 - 3853561401

Pos A B H C I N Q
R

NP-20109

0403 - 0404 ÖN PORYA



OEM

3563340201 - 3563340001

Pos A B H C I N Q
F

NP-20110

0403 - 0404 ÇEKİCİ PORYA



OEM

3563560001

Pos A B H C I N Q
R

NP-20111

AXOR/ACTROS ESKİ MODEL ÖN PORYA



OEM

9423341201 - 9423340701 - 9423340201 - 9423341501

Pos A B H C I N Q
F

NP-20112

AXOR ÇEKİCİ PORYA



OEM

9463560201 - 9463560901

Pos A B H C I N Q
R

NP-20113

AXOR İLAVE DİNGİL PORYA



OEM

3560101101 - 9463560101 - 9463561301

Pos A B H C I N Q
AXLE

NP-20120

345 OTOBÜS ÇEKİCİ PORYA



OEM

4472435160 - 0003560401

Pos	A	B	H	C	I	N	Q
R							

NP-20122

EURO 4 OTOBÜS ÇEKİCİ PORYA



OEM

0003501235 - ZF4474335121 - ZF4473755725

Pos	A	B	H	C	I	N	Q
R							

NP-20127

TRAVEGO ÖN PORYA



OEM

9423341101

Pos	A	B	H	C	I	N	Q
F							

NP-20128

TRAVEGO ÇEKİCİ PORYA



OEM

9463561901 - 9463560201 - 9463560901

Pos	A	B	H	C	I	N	Q
R							

NP-21504

NEOPLAN OTOBÜS ÇEKİCİ PORYA



OEM

4472435370 - 4472433570

Pos	A	B	H	C	I	N	Q
R							

NP-20210

MAN - TGA - FORTUNA ÇEKİCİ PORYA



OEM

81357010155 - 81357013155

Pos	A	B	H	C	I	N	Q
R							

DAF - VOLVO

NP-21104

ATI 95 ÇEKİCİ PORYA



OEM

1275024 - 1248432 - 0538444 - 1348432 - 1335063 - 1389061

Pos A B H C I N Q
R

NP-21110

XF-CF ÖN PORYA (2006 ÖNCESİ)



OEM

1391615 - 1697346 - 1388905

Pos A B H C I N Q
F

NP-21111

XF-CF ÇEKİCİ PORYA (2006 ÖNCESİ)



OEM

1391617 - 1818003 - 1389061 - 1388906

Pos A B H C I N Q
R

NP-21114

XF-CF ÖN PORYA (2006 SONRASI)



OEM

1691621 - 1699327 - 1818004

Pos A B H C I N Q
F

NP-21115

XF-CF ÇEKİCİ PORYA (2006 SONRASI)



OEM

1657637 - 1812161

Pos A B H C I N Q
R

NP-21407

VOLVO - FREZE DİSKLİ ÖN PORYA



OEM

85111792 - 85105692 - 3989919 - 3099341 - 20534900

Pos A B H C I N Q
F

NP-21408

FM-FH ÇEKİCİ PORYA



OEM

39888833 - 85105696 - 20516966 - 20476383 - 85104298
39888834

Pos	A	B	H	C	I	N	Q
R							

NP-21411

FH 12 ÖN PORYA



OEM

3988930 - 3989341 - 85107750 - 8511448

Pos	A	B	H	C	I	N	Q
F							

NP-21415

FM-FH ÖN PORYA



OEM

20535202 - 85114470 - 85111791 - 1026798

Pos	A	B	H	C	I	N	Q
F							

NP-21416

FM-FH ÇEKİCİ PORYA



OEM

20535263 - 85107753 - 20567394

Pos	A	B	H	C	I	N	Q
R							

NP-21425

FM 12 ARKA PORYA



ESKİ KOD : NP-2025

OEM

20517164

Pos	A	B	H	C	I	N	Q
R							

NP-21428

VOLVO ÖN PORYA



ESKİ KOD : NP-2028

OEM

21024160 - 21024166 - 20534905

Pos	A	B	H	C	I	N	Q
F							

VOLVO - RENAULT - IVECO

NP-21429

VOLVO - FM 9 ARKA PORYA



OEM

Pos A B H C I N Q
R

ESKİ KOD : NP-2029

NP-20404

RENAULT - PREMIUM ÖN PORYA



OEM

7420535202 - 1026659 - 7485114470

Pos A B H C I N Q
F

NP-20408

RENAULT - PREMIUM ÇEKİCİ PORYA



OEM

7420535263 - 7420819834 - 7485107753

Pos A B H C I N Q
R

NP-20409

RENAULT - PREMIUM ÖN PORYA



OEM

7421021381 - 7410241087

Pos A B H C I N Q
F

NP-20501

IVECO - 50 NC YENİ MODEL ÖN PORYA



OEM

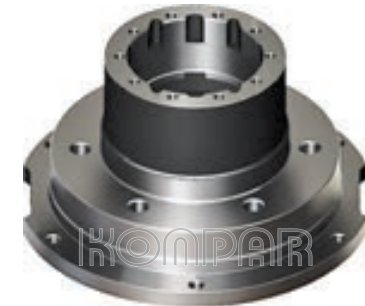
4685285 - 7168364

Pos A B H C I N Q
F

ESKİ KOD : NP-2001

NP-20502

IVECO - 50 NC YENİ MODEL ARKA PORYA



OEM

4686447 - 7168365

Pos A B H C I N Q
R

ESKİ KOD : NP-2002

IVECO - ISUZU

NP-20503

IVECO - 85-12 DİSK ÖN PORYA



ESKİ KOD : NP-2015

OEM
7166920

Pos A B H C I N Q
F

NP-20504

IVECO - EUROBUS ÖN DİSK PORYA



ESKİ KOD : NP-2016

OEM
7173750

Pos A B H C I N Q
F

NP-20505

IVECO - EUROBUS ARKA DİSK PORYA



ESKİ KOD : NP-2017

OEM
7173696

Pos A B H C I N Q
R

NP-20809

ISUZU - NPR ÖN PORYA



ESKİ KOD : NP-2003

OEM
8942463081

Pos A B H C I N Q
F

NP-20810

ISUZU - NPR ARKA PORYA



ESKİ KOD : NP-2004

OEM
3899906090

Pos A B H C I N Q
R

NP-20811

ISUZU - ŞAMPİYON ÖN PORYA



ESKİ KOD : NP-2005

OEM
3777727543

Pos A B H C I N Q
F

ISUZU

NP-20812

ŞAMPİYON ARKA PORYA



ESKİ KOD : NP-2006

OEM

3777700050

Pos A B H C I N Q
R

NP-20813

NOR ÖN PORYA



ESKİ KOD : NP-2013

OEM

8971312360

Pos A B H C I N Q
F

NP-20814

NOR - NPR 75 ABS ARKA PORYA



ESKİ KOD : NP-2014

OEM

3777731710 - 3777707960 - 897250321101

Pos A B H C I N Q
R

NP-20818

NQR ABS ÖN PORYA



ESKİ KOD : NP-2018

OEM

377773213101

Pos A B H C I N Q
F

NP-20819

NNR ÖN PORYA



ESKİ KOD : NP-2019

OEM

Pos A B H C I N Q
F

NP-20821

NPR 75 ABS ARKA PORYA



ESKİ KOD : NP-2021

OEM

8973499110

Pos A B H C I N Q
R

NP-20824

ISUZU - NPR 66 OTOBÜS DAR GÖBEK
ARKA PORYA

OEM

Pos A B H C I N Q
R

NP-20827

ISUZU - NOVA ARKA PORYA



OEM

Pos A B H C I N Q
R

NP-21007

DORSE 10 BİJON PORYA



OEM

Pos A B H C I N Q
T

NP-21008

DOSTAŞ 10 BİJON PORYA



OEM

Pos A B H C I N Q
T

NP-21009

PİLOT ÇEMBERLİ PORYA



OEM

Pos A B H C I N Q
T

NP-21011

DORSE İSPİT ÇEVİRME PORYA



OEM

Pos A B H C I N Q
T

BPW - FRUEHAUF - HYUNDAI

NP-21020

PILOT DORSE PORYA



OEM

Pos A B H C I N Q
T

NP-21021

FRUEHAUF - ÇİFT TEKER PORYA



OEM

AJB0038001 - CF1014228

Pos A B H C I N Q
F

NP-25044

HYUNDAI - HD65 ARKA PORYA



OEM

Pos A B H C I N Q



Transnational
production
capacity...

BRAKE DISC

Fren Diski



BRAKE DISCS

MERCEDES

NP-0101

0403 - 0404 FREN DİSKİ



OEM

3564211012 - 3564210312 - 3564211212

Pos	A	B	H	C	I	N	Q
F-R	438	45	135	195	235	10	M14 1.5

NP-0102

ACTROS FREN DİSKİ



OEM

9424212112 - 9424211212 - 9424210912 - 9424211012
9424211112 - II34600 - II37638 - II376380061

Pos	A	B	H	C	I	N	Q
F-R	430	45	133	211	238	10	M14 1.5

NP-0103

AXOR FREN DİSKİ



OEM

9424212112 - 9424211212 - 9424210912 - 9424211012
9424211112 - II34600 - II37638 - II376380061

Pos	A	B	H	C	I	N	Q
F-R	430	45	133	211	238	10	M14 1.5

NP-0104

15.17 ATEGO ÖN FREN DİSKİ



OEM

9754210012 - 9754210112 - 9754210212
9754219112 - 6754210112 - II30676

Pos	A	B	H	C	I	N	Q
F	377	45	134	105.5	138	14	15

NP-0105

15.17 ATEGO ARKA FREN DİSKİ



OEM

9754230612 - 9754230012 - 6754210312 - 6754230312
9754210312 - 9754230312 - 9754290612 - II30677

Pos	A	B	H	C	I	N	Q
R	377	45	138	176	201	8	M14 1.5

NP-0106

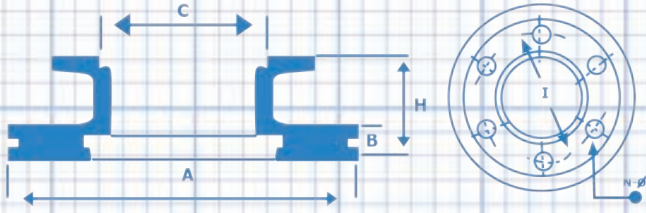
560 FREN DİSKİ



OEM

2069432001 - 8285390000 - 501313313 - 204556

Pos	A	B	H	C	I	N	Q
F	432	45	135	194	220	10	M16 1.5



A : Balata Çapı - Diameter Inside
 B : Balata Boyu - Brake Surface
 H : Komple Boy - Total Height
 C : Göbek Çapı - Hub Diameter
 I : Delik Merkezi - Distance Between Holes
 N : Delik Sayısı - Hole Quantity
 Q : Delik Çapı - Hole Diameter

F : FRONT
 R : REAR
 T : TRAILER

MERCEDES

NP-0107

NİEDERFLUR NF 3 FREN DİSKİ



OEM

082135830 - 234110 - II37191 - II31025 - 0501315228

Pos	A	B	H	C	I	N	Q
F	430	45	131	203	235	10	M16 1.5

NP-0108

AXOR YENİ MODEL FREN DİSKİ



OEM

9434210312

Pos	A	B	H	C	I	N	Q
F	430	45	143	131	168	10 2	21 M12

NP-0109

KOLUMAN MİDİLLİ TRAILER FREN DİSKİ



OEM

6754210012

Pos	A	B	H	C	I	N	Q
T	377	45	131.5	210	239	10	M14 1.5

NP-0112

MB 240 FREN DİSKİ



OEM

6884210212 - 6884210012

Pos	A	B	H	C	I	N	Q
F	312	34	82	118	140	6	M12 1.5

NP-0114

MB 260 ÖN FREN DİSKİ



OEM

6704210312 - 6704210112 - 6703560312

Pos	A	B	H	C	I	N	Q
F	324	30	91	118	140	6	M12 1.5

NP-0115

MB 260 ARKA FREN DİSKİ



OEM

6884230212 - 6884230012

WITH ABS

Pos	A	B	H	C	I	N	Q
R	312	34	115.5	157	192	6	M12 1.5

MERCERES - MAN

NP-0123

ATEGO 10 DELİK ÖN FREN DİSKİ



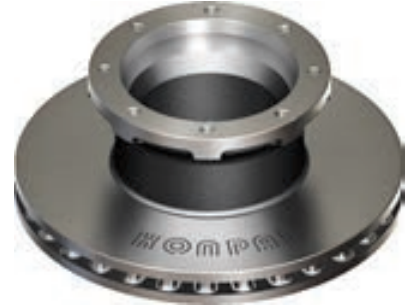
OEM

9704210112 - 9704210012 - 9704210612

Pos	A	B	H	C	I	N	Q
F	335	34	102.5	92	120	10	14.5

NP-0124

MERCEDES ATEGO 8 DELİK (AVRUPA) ARKA FREN DİSKİ



OEM

9704230212

Pos	A	B	H	C	I	N	Q
R	330	34	130	145	177	8	M12 1.5

NP-0201

19.463 SG90 F 2000 FREN DİSKİ



OEM

81508030009 - 81508030014 - 81508030001
81508030015 - II39289F

Pos	A	B	H	C	I	N	Q
F	438	45	135	200	235	10	M16 1.5

NP-0202

19.463 SG 90 F 2000 FREN DİSKİ



OEM

81508030023 - 81508030038 - 81508030031

Pos	A	B	H	C	I	N	Q
F	432	45	130	131	168	12 3	19 M12

NP-0203

T.G.A. 18.410 / 460 ÖN FREN DİSKİ



OEM

81508030040 - 81508030046

Pos	A	B	H	C	I	N	Q
F	432	45	130	131	168	12 3	19 M12

NP-0204

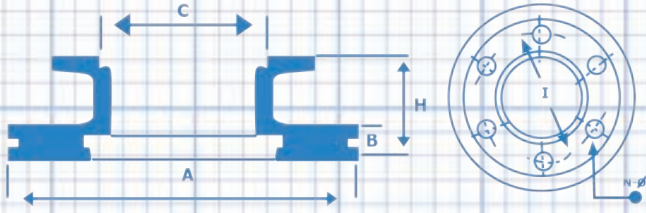
T.G.A. 18.410 / 460 ARKA FREN DİSKİ



OEM

81508030041 - 81508030021 - 81508030047

Pos	A	B	H	C	I	N	Q
R	432	45	135	208	235	10	M16 1.5



A : Balata apı - Diameter Inside
 B : Balata Boyu - Brake Surface
 H : Komple Boy - Total Height
 C : Gbek apı - Hub Diameter
 I : Delik Merkezi - Distance Between Holes
 N : Delik Sayısı - Hole Quantity
 Q : Delik apı - Hole Diameter

F : FRONT
 R : REAR
 T : TRAILER

MAN

NP-0205

12.153 N FREN DİSKİ



OEM

81508030026 - 81508030024

Pos	A	B	H	C	I	N	Q
F	330	34	104	135	158	10	M14 1.5

NP-0206

12.153 ARKA FREN DİSKİ



OEM

81508030022 - 81508030061

Pos	A	B	H	C	I	N	Q
R	330	34	124	157	180	12	M12 1.5

NP-0207

10.153 FREN DİSKİ



OEM

81508030010

Pos	A	B	H	C	I	N	Q
F	324	30	102	135	158	10	M14 1.5

NP-0208

12.163 FREN DİSKİ



OEM

81508030026 - 81508030024

Pos	A	B	H	C	I	N	Q
F	330	34	104	135	158	10	M14 1.5

NP-0209

12.163 (ABS) FREN DİSKİ



OEM

81508030022 - 81508030061

WITH ABS

Pos	A	B	H	C	I	N	Q
R	330	34	124	157	180	12	M12 1.5

NP-0210

T.G.L 12.180 N FREN DİSKİ



OEM

81508030042 - 81508030053

Pos	A	B	H	C	I	N	Q
F	335	34	93	90	122	10 2	15 M10x1.5

MAN - RENAULT

NP-0211

T.G.L 12.180 ARKA FREN Diski



OEM

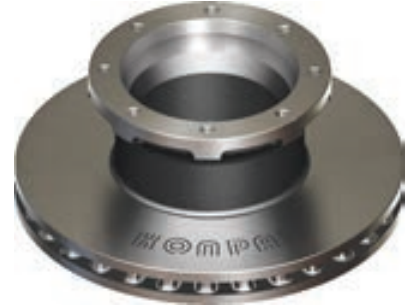
81508030063 - 81508030062 - 8150800054

WITH ABS

Pos	A	B	H	C	I	N	Q
R	335	34	118	154	176	10 2	M14 M8

NP-0213

L2000 FREN Diski



OEM

81508030039

Pos	A	B	H	C	I	N	Q
R	330	34	130	145	177	8	M12 1.5

NP-0214

MAN - 18.222 FREN Diski



OEM

81508030020 - 81508030027 - 81508030057 - II39290F

Pos	A	B	H	C	I	N	Q
F	377	45	128	162	195	10	M14 1.5

NP-0401

RENAULT - MAGNUM PREMIUM
AE - 385 FREN Diski



OEM

5010216437

Pos	A	B	H	C	I	N	Q
F	438	45	97	131	165	10 2	17 M14

NP-0402

400 - 420 FREN Diski



OEM

5010422593 - 504134958 - 5010422363 - 5006172150

Pos	A	B	H	C	I	N	Q
F	434	45	97	131	165	10 2	17 M14

NP-0403

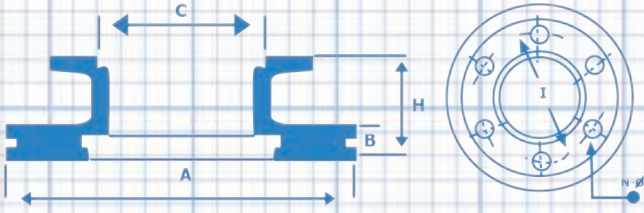
420 FREN Diski



OEM

5010525326

Pos	A	B	H	C	I	N	Q
R	435	45	163	260	335	10	32.75



A : Balata Çapı - Diameter Inside
 B : Balata Boyu - Brake Surface
 H : Komple Boy - Total Height
 C : Göbek Çapı - Hub Diameter
 I : Delik Merkezi - Distance Between Holes
 N : Delik Sayısı - Hole Quantity
 Q : Delik Çapı - Hole Diameter

F : FRONT
 R : REAR
 T : TRAILER

RENAULT

NP-0404

210 MIGNUM FREN DİSKİ



OEM

5010260218

Pos	A	B	H	C	I	N	Q
F	380	45	85	117	144	10 2	15 M14x2

NP-0405

220 FREN DİSKİ



OEM

5010525014

Pos	A	B	H	C	I	N	Q
F	376	45	99	117	144	10 2	15 M14

NP-0406

220 (10 DELİK) FREN DİSKİ



OEM

5010525364

Pos	A	B	H	C	I	N	Q
R	377	45	168	262	335	10	33

NP-0407

440 FREN DİSKİ



OEM

5001864498

Pos	A	B	H	C	I	N	Q
F-R	434	45	45	220			

NP-0408

220 (8 DELİK) FREN DİSKİ



OEM

5010525362 - 5010525015

Pos	A	B	H	C	I	N	Q
R	377	45	166	222	275	8	22

NP-0410

RENAULT KÜÇÜK FREN DİSKİ



OEM

5010250101 - 5010260101 - 5010216931

Pos	A	B	H	C	I	N	Q
F	304	30	135	250	205	6	21

BRAKE DISCS

RENAULT

NP-0412

150 MIDLUM FREN DİSKİ



OEM

5010422262

Pos	A	B	H	C	I	N	Q
F	330	34	80	95	118	10 2	15 M12

NP-0414

460 FREN DİSKİ

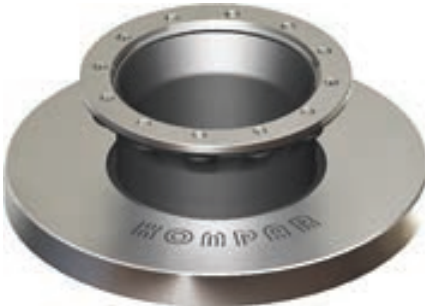


OEM

Pos	A	B	H	C	I	N	Q
F-R	434	45	45	220			

NP-0415

460 - 480 FREN DİSKİ



OEM

5010422364

Pos	A	B	H	C	I	N	Q
R	435	45	160	224.1	256	12	M14

NP-0416

280 YENİ MODEL ÖN FREN DİSKİ



OEM

5010598308

Pos	A	B	H	C	I	N	Q
F	410	45	93	131	165	10 2	17 M14

NP-0418

280 ARKA FREN DİSKİ



OEM

5010598309

Pos	A	B	H	C	I	N	Q
R	410	45	181.75	262	335	10	32.75

NP-0419

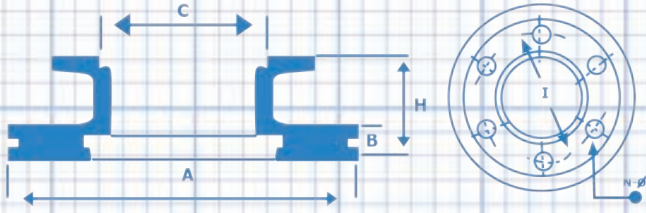
220 ÖN Y.M. ÖN FREN DİSKİ



OEM

5010598305

Pos	A	B	H	C	I	N	Q
F	375	45	119	111	142	10 2	15 M12



A : Balata Çapı - Diameter Inside
 B : Balata Boyu - Brake Surface
 H : Komple Boy - Total Height
 C : Göbek Çapı - Hub Diameter
 I : Delik Merkezi - Distance Between Holes
 N : Delik Sayısı - Hole Quantity
 Q : Delik Çapı - Hole Diameter

F : FRONT
 R : REAR
 T : TRAILER

RENAULT - IVECO

NP-0420

220 ARKA Y.M. ARKA FREN DİSKİ



OEM

5001867798 - 85110495 - 85103804

Pos	A	B	H	C	I	N	Q
R	410	45	45	220			

NP-0507

FIAT IVECO

85 - 12 / 120 - 14 FREN DİSKİ



OEM

07171274 - 01904532 - 7168368 - 42830

Pos	A	B	H	C	I	N	Q
F	315	26	118.5	160	205	6 2	18 M10

NP-0508

EUROBUS ÖN FREN DİSKİ



OEM

7182772-Y - 1908578

Pos	A	B	H	C	I	N	Q
F	322	30	134	215	275	8 2	20 M10

NP-0509

EUROBUS ARKA FREN DİSKİ



OEM

7182770-Y - 1908578

Pos	A	B	H	C	I	N	Q
R	322	30	134	215	275	8 2	20 M10

NP-0510

EUROTEHC FREN DİSKİ



OEM

01907631 - 01908729 - 1908614 - 2991979
 7173317 - 7180111 - 4856912

Pos	A	B	H	C	I	N	Q
F	430	50	102	170	195	12	M16 2

NP-0511

EUROSTAR FREN DİSKİ



OEM

01906461 - 01906438 - 2992470 - 2992477 - 2996327
 2996329 - 2996378 - 7179778 - 7182305 - 7184136 - 1137654

Pos	A	B	H	C	I	N	Q
F	436	45	138	210	240	12	M16 2

IVECO

NP-0512

EUROCARGO 220E21 FREN DİSKİ



OEM

2995894 - 2995702 - 7187541

Pos	A	B	H	C	I	N	Q
F	377	45	107	113	144	14	15

NP-0513

EUROCARGO 220E21 BİJONLU FREN DİSKİ



OEM

2992636 - 7184078



WITH ABS

Pos	A	B	H	C	I	N	Q
R	377	45	151	225	275	8 2	22 M10

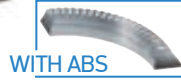
NP-0515

STRALIS (ABS) FREN DİSKİ



OEM

2995812 - 2996328 - 7189476 - 7185503



WITH ABS

Pos	A	B	H	C	I	N	Q
R	432	45	154	210	240	12	M16 2

NP-0518

EUROBUS SOĞUTMASIZ ÖN FREN DİSKİ



OEM

75644 - 76267

Pos	A	B	H	C	I	N	Q
F	322	30	134	215	275	8 2	20 M10

NP-0519

EUROBUS SOĞUTMASIZ ARKA FREN DİSKİ



OEM

75644 - 76266

Pos	A	B	H	C	I	N	Q
R	322	30	134	215	275	8 2	20 M10

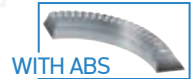
NP-0521

120E21 EUROCARGO (ABS) FREN DİSKİ



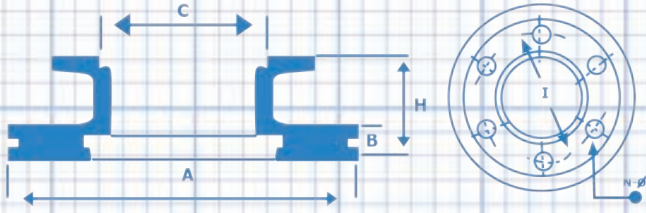
OEM

01906466 - 7183632



WITH ABS

Pos	A	B	H	C	I	N	Q
R	330	34	141	215	275	8 2	20 M10



A : Balata Çapı - Diameter Inside
 B : Balata Boyu - Brake Surface
 H : Komple Boy - Total Height
 C : Göbek Çapı - Hub Diameter
 I : Delik Merkezi - Distance Between Holes
 N : Delik Sayısı - Hole Quantity
 Q : Delik Çapı - Hole Diameter

F : FRONT
 R : REAR
 T : TRAILER

IVECO

NP-0522

85E13 EUROCARGO FREN DİSKİ



OEM
 60260 - 77794

Pos	A	B	H	C	I	N	Q
F	322	30	134	160	205	6 2	18 M10

NP-0523

85E13 EUROCARGO SOĞUTMASIZ FREN DİSKİ



OEM
 76258

Pos	A	B	H	C	I	N	Q
F	322	30	134	160	205	6 2	18 M10

NP-0524

85E13 EUROCARGO ARKA FREN DİSKİ



OEM
 74305

Pos	A	B	H	C	I	N	Q
R	322	30	134	160	205	6 2	18 M10

NP-0525

85E13 EUROCARGO SOĞUTMASIZ FREN DİSKİ



OEM
 66643

Pos	A	B	H	C	I	N	Q
R	322	30	134	160	205	6 2	18 M10

NP-0540

DAILY 35-C-15 (ABS) FREN DİSKİ



OEM
 42546401 - 504079365 - 504080994

Pos	A	B	H	C	I	N	Q
F	290	22	110.5	125	170	6 6	M18 13

NP-0541

DAILY ÖN FREN DİSKİ



OEM
 42470842 - 1908772 - 93821918

Pos	A	B	H	C	I	N	Q
F	290	22	111	125	170	6 6	M18 13

BRAKE DISCS

IVECO

NP-0542

DAILY ARKA FREN DİSKİ



OEM

42471111 - 1908773 - 1908793 - 7180256

Pos	A	B	H	C	I	N	Q
R	289	22	85	84	108	8	10.5

NP-0543

DAILY 65 C 15 ÖN FREN DİSKİ



OEM

42471214

Pos	A	B	H	C	I	N	Q
F	290	26	53	80	110	9	12.5

NP-0544

DAILY 65 C 15 ARKA FREN DİSKİ



OEM

7182874 - 42471150

Pos	A	B	H	C	I	N	Q
R	306	22	137	178	215	6	M10 1.25

NP-0545

DAILY 35-C-15 YENİ MODEL ÖN FREN DİSKİ



OEM

2996121

Pos	A	B	H	C	I	N	Q
F	290	28	46	74	95	9	12.5

NP-0546

DAILY 35-C-15 YENİ MODEL ARKA FREN DİSKİ



OEM

2996043

WITH ABS

Pos	A	B	H	C	I	N	Q
R	294	24	87.5	84	108	8	10.5

NP-0547

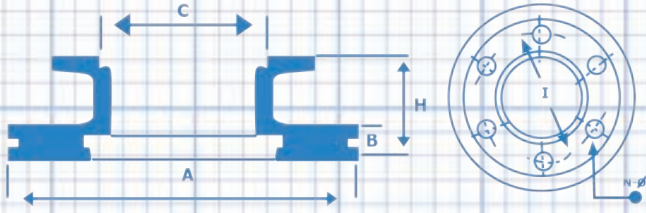
DAILY Y.M. 70-C -15 ÖN FREN DİSKİ



OEM

504121723 - 2996122

Pos	A	B	H	C	I	N	Q
F	301	30	59	83	111	9	14.5



A : Balata Çapı - Diameter Inside
B : Balata Boyu - Brake Surface
H : Komple Boy - Total Height
C : Göbek Çapı - Hub Diameter
I : Delik Merkezi - Distance Between Holes
N : Delik Sayısı - Hole Quantity
Q : Delik Çapı - Hole Diameter

F : FRONT
R : REAR
T : TRAILER

IVECO - MAGIRUS - OTOKAR

NP-0548

DAILY 70-C-15 ARKA FREN DİSKİ



OEM

7186848 - 2996049

Pos	A	B	H	C	I	N	Q
R	306	28	132	178	216	6	M10 1.5

NP-0605

MAGIRUS - YENİ MODEL ÖN FREN DİSKİ



OEM

12E0008248

Pos	A	B	H	C	I	N	Q
F	290	25	160	120	205	6 6	M18 13

NP-0610

OTOKAR - SULTAN ÖN FREN DİSKİ



OEM

13C2505572BA

Pos	A	B	H	C	I	N	Q
F	330	34	80	95	118	10 2	15 M12

NP-0611

OTOKAR - SULTAN (ABS)
ARKA FREN DİSKİ



OEM

13C3508390BA

WITH ABS

Pos	A	B	H	C	I	N	Q
R	330	34	119	150	175	12	M12

NP-0612

OTOKAR
DORUK OTOBÜS ÖN FREN DİSKİ



OEM

16H00-05-464AA

Pos	A	B	H	C	I	N	Q
F	377	45	130	105	144	10 1	14.5 M12

NP-0613

OTOKAR - DORUK OTOBÜS (ABS) ARKA
FREN DİSKİ



OEM

16F00-05-248AA

WITH ABS

Pos	A	B	H	C	I	N	Q
R	377	45	138.5	169	196	8	M14 1.5

BRAKE DISCS

OTOKAR - ISUZU - BPW

NP-0614

SULTAN Y.M. (EURO 4) ÖN FREN DİSKİ



OEM

13C33-0557

Pos	A	B	H	C	I	N	Q
F	335	34	102.5	92	120	10	14.5

NP-0810

ISUZU - CITIBUS FREN DİSKİ



OEM

377777391054

Pos	A	B	H	C	I	N	Q
F	330	34	102.5	91.70	122	10 2	15 M10

NP-0818

ISUZU - CITIMAX FREN DİSKİ



OEM

WITH ABS

Pos	A	B	H	C	I	N	Q
R	375	45	139	169	196	8	M14 1.5

NP-0820

ISUZU - NOVO LUX ARKA FREN DİSKİ



OEM

3870143170

WITH ABS

Pos	A	B	H	C	I	N	Q
R	330	34	119	150	175	12	M12

NP-1002

BPW - KOGEL DORSE FREN DİSKİ



OEM

0308835010

Pos	A	B	H	C	I	N	Q
T	430	45	160	290	335	10	23

NP-1003

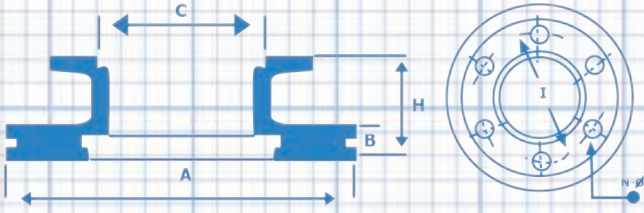
BPW - FRUEHAUF FREN DİSKİ



OEM

0308835030 - 0308835037

Pos	A	B	H	C	I	N	Q
T	430	45	160	290	335	10	23



A : Balata Çapı - Diameter Inside
 B : Balata Boyu - Brake Surface
 H : Komple Boy - Total Height
 C : Göbek Çapı - Hub Diameter
 I : Delik Merkezi - Distance Between Holes
 N : Delik Sayısı - Hole Quantity
 Q : Delik Çapı - Hole Diameter

F : FRONT
 R : REAR
 T : TRAILER

BPW

NP-1004

BPW - KÜÇÜK DAR BOĞAZ 020 FREN DİSKİ



OEM

0308834020 - 0308834060 - 0308834067
 103784 - 104085

Pos	A	B	H	C	I	N	Q
T	377	45	160	290	335	10	23

NP-1005

BPW - KÜÇÜK GENİŞ BOĞAZ 040 FREN DİSKİ



OEM

0308834080 - 0308834087

Pos	A	B	H	C	I	N	Q
T	377	45	170	290	335	10	23

NP-1006

BPW - GENİŞ BOĞAZ 160'LIK 298 GÖBEK FREN DİSKİ



OEM

0308834100 - 0308834107

Pos	A	B	H	C	I	N	Q
T	377	45	160	298	335	10	22.5

NP-1007

BPW - GENİŞ BOĞAZ 160'LIK 290 GÖBEK FREN DİSKİ



OEM

0308834040 - 0308834047 - 0300224093

Pos	A	B	H	C	I	N	Q
T	377	45	160	290	335	10	23

NP-1008

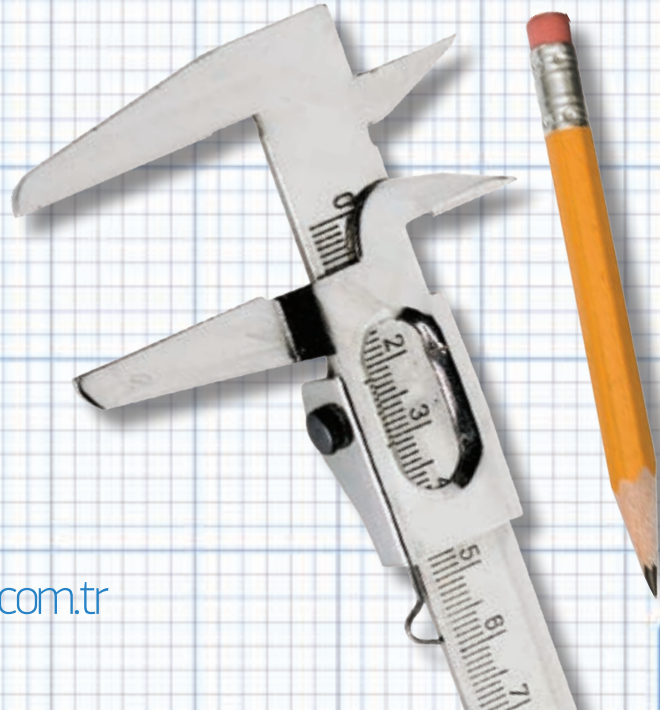
BPW - KÜÇÜK 8 DELİK FREN DİSKİ



OEM

0308834010 - 0308834017 - 0308834030

Pos	A	B	H	C	I	N	Q
T	377	45	160	230	275	8	23



SAF - FRUEHAUF

NP-1009

SAF - DORSE FREN DİSKİ



OEM

4079000500 - 4079000501 - 4079000502

Pos	A	B	H	C	I	N	Q
T	430	45	130	131	168	12 3	19 M12

NP-1011

SAF - KÜÇÜK 8 DELİK FREN DİSKİ



OEM

4079000400

Pos	A	B	H	C	I	N	Q
T	377	45	158	244	275	8	22.5

NP-1012

SAF - KÜÇÜK GÖBEKSİZ FREN DİSKİ



OEM

4079001001 - 4079001000 - 4079001002

Pos	A	B	H	C	I	N	Q
T	376	45	58	170.5	190	10	13.5

NP-1013

SAF - BÜYÜK GÖBEKSİZ FREN DİSKİ



OEM

4079001300 - 4079001301 - 407901300

Pos	A	B	H	C	I	N	Q
T	430	45	48	170.5	190	10	13.5

NP-1014

FRUEHAUF - YM. UZUN 170 LİK (SCHMITZ) FREN DİSKİ



OEM

17870

Pos	A	B	H	C	I	N	Q
T	430	45	168.5	290	335	10	22

NP-1015

FRUEHAUF - (ABS) HALDEX FREN DİSKİ

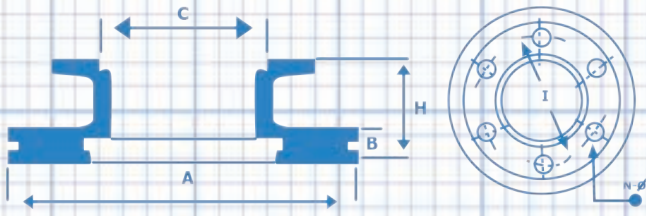


OEM

13162025 - 103696449445 - CF103696
M069018 - M200135 - MBR9007 - M069018

WITH ABS

Pos	A	B	H	C	I	N	Q
T	430	45	155	280	335	10	26



A : Balata apı - Diameter Inside
B : Balata Boyu - Brake Surface
H : Komple Boy - Total Height
C : Gbek apı - Hub Diameter
I : Delik Merkezi - Distance Between Holes
N : Delik Sayısı - Hole Quantity
Q : Delik apı - Hole Diameter

F : FRONT
R : REAR
T : TRAILER

BPW - SAF

NP-1016

BPW - BYK 298 GBEK 050 FREN DİSKİ



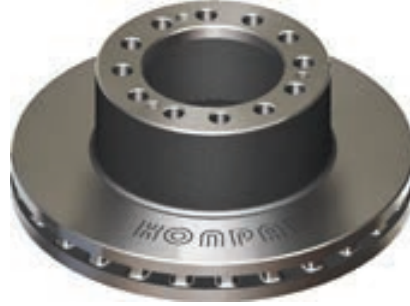
OEM

0308835050 - 0308835057

Pos	A	B	H	C	I	N	Q
T	430	45	160	298	335	10	22.5

NP-1017

SAF - KK 12 DELİK FREN DİSKİ



OEM

4079000700 - 4079000701

Pos	A	B	H	C	I	N	Q
T	375	45	140	131	168	12 3	19 M12

NP-1018

SAF - BYK PAPATYA 10 DELİK FREN DİSKİ



OEM

4079000300

Pos	A	B	H	C	I	N	Q
T	430	45	160	276	335	10	23

NP-1019

SAF - B9 22" FREN DİSKİ



OEM

4079001700 - 4079001701

Pos	A	B	H	C	I	N	Q
T	430	45	131.5	189.25	215	10	M14 1.5

NP-1020

SAF - KK B9 FREN DİSKİ



OEM

4079001800 - 4079001801

Pos	A	B	H	C	I	N	Q
T	376	45	140	189.25	215	10	M14 1.5

NP-1021

GİGANT DORSE FREN DİSKİ



OEM

9267086

Pos	A	B	H	C	I	N	Q
T	430	45	155	280	335	10	26,5

ROR - DAF

NP-1030

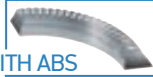
ROR DORSE - FREN DİSKİ



OEM

68323825 - MBR9004 - 6832382504
68323552

WITH ABS



Pos	A	B	H	C	I	N	Q
T	436	45	150	222	250	10	M16 2

NP-1031

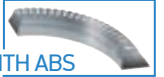
ROR DORSE - YM FREN DİSKİ



OEM

21225115 - 3218G1333 - MBR9018
21227349 - 31788700100

WITH ABS



Pos	A	B	H	C	I	N	Q
T	378	45	150	222	250	10	M16 2

NP-1101

DAF - CF85 X F95 FREN DİSKİ



OEM

1387439 - 1640561 - 1726138 - II39112F - II39541F
II39112F - IL39541F - K004322 - Z0009911

Pos	A	B	H	C	I	N	Q
F-R	432	45	45	217			

NP-1102

DAF - OTOBUS ÇİFT KATLI FREN DİSKİ



OEM

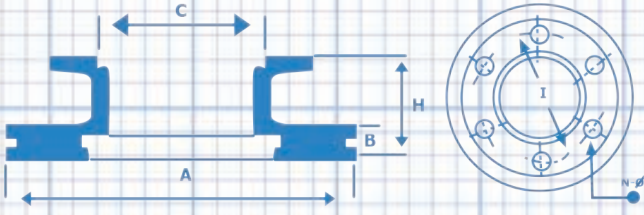
299095 - 1238372 - 299295

Pos	A	B	H	C	I	N	Q
F	460	48	119	170	195	10	M16 2

?

Aradığınız ürünü
bulamadınız mı ?

İnternet Sayfamızı
Ziyaret Edebilirsiniz



A : Balata Çapı - Diameter Inside
B : Balata Boyu - Brake Surface
H : Komple Boy - Total Height
C : Göbek Çapı - Hub Diameter
I : Delik Merkezi - Distance Between Holes
N : Delik Sayısı - Hole Quantity
Q : Delik Çapı - Hole Diameter

F : FRONT
R : REAR
T : TRAILER

SETRA - SCANIA

NP-1201

SETRA - 317 - 417 YENİ MODEL
FREN DİSKİ



OEM

2069432001 - 8285390000 - 501313313 - 204556

Pos	A	B	H	C	I	N	Q
F	432	45	135	194	220	10	M16 1.5

NP-1202

SETRA - TEK KATLI KISA BOĞAZ
FREN DİSKİ



OEM

350103 - 179241111307 - 8284000147 - 179241113070

Pos	A	B	H	C	I	N	Q
F	396	45	119	194	215	10	M16 1.5

NP-1203

SETRA - ÇİFT KATLI UZUN BOĞAZ
FREN DİSKİ



OEM

1792411111310 - 8285000235 - 179241111131 -
179241111131B

Pos	A	B	H	C	I	N	Q
F	406	48	173	194	215	10	M16 1.5

NP-1204

SETRA - KOCA KAFA FREN DİSKİ



OEM

Pos	A	B	H	C	I	N	Q
F	392	47	122	215	255	10	M16 1.5

NP-1205

SETRA - KÜÇÜK FREN DİSKİ



OEM

Pos	A	B	H	C	I	N	Q
F	316	34	154	253	205	6 2	18 M10

NP-1301

SCANIA - 420 FREN DİSKİ



OEM

1386686 - 1402272 - 1852817 - K000510 - K000810

Pos	A	B	H	C	I	N	Q
F-R	430	45	131	208	237	10	M16 1.5

VOLVO - NEOPLAN - BMC

NP-1401

VOLVO - FH12 FREN DİSKİ



OEM

85103803 - 20515093

Pos	A	B	H	C	I	N	Q
F-R	434	45	45	220			

NP-1402

VOLVO - FH12 SOĞUTMASIZ FREN DİSKİ



OEM

8551042 - 5001864498

Pos	A	B	H	C	I	N	Q
F-R	434	45	45	220			

NP-1405

VOLVO - KÜÇÜK EURO 5 FREN DİSKİ



OEM

85103804

Pos	A	B	H	C	I	N	Q
R	410	45	45	220			

NP-1406

VOLVO - EURO 5 SOĞUTMASIZ FREN DİSKİ



OEM

3092710

Pos	A	B	H	C	I	N	Q
F-R	410	45	45	220			

NP-1501

NEOPLAN - SKYLINGER FREN DİSKİ



OEM

082135830 - 234110 - II37191 - II31025 - 0501315228

Pos	A	B	H	C	I	N	Q
F	430	45	131	203	235	10	M16 1.5

NP-1602

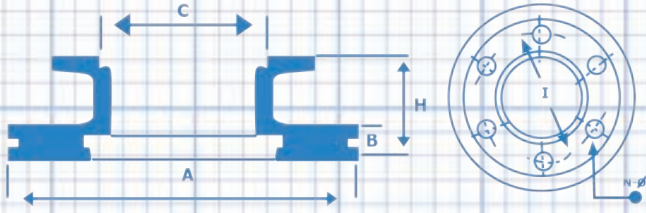
BMC - PRO 518 FREN DİSKİ



OEM

57RS300820

Pos	A	B	H	C	I	N	Q
F	330	34	124	157	180	12	M12 1.5



A : Balata Çapı - Diameter Inside
 B : Balata Boyu - Brake Surface
 H : Komple Boy - Total Height
 C : Göbek Çapı - Hub Diameter
 I : Delik Merkezi - Distance Between Holes
 N : Delik Sayısı - Hole Quantity
 Q : Delik Çapı - Hole Diameter

F : FRONT
 R : REAR
 T : TRAILER

BMC - FORD

NP-1604

BMC - LEVEND XL FREN DİSKİ



OEM

57RS304999

Pos	A	B	H	C	I	N	Q
F	316	24	53.2	108	133	6 3	12.1 M5

NP-1605

BMC - 3000 NISSAN (ABS) FREN DİSKİ



OEM

57RS302289

Pos	A	B	H	C	I	N	Q
F	301	24	85.6	53	114	6 3	12.5 M5

NP-1608

BMC - PRO 180 FREN DİSKİ



OEM

57RS305716

Pos	A	B	H	C	I	N	Q
F	377	45	129	169	196	8	M14 1.5

NP-1610

BMC - BELDE OTOBÜS ÖN FREN DİSKİ



OEM

57RS307931

Pos	A	B	H	C	I	N	Q
F	430	45	138	197	240	16	M12

NP-1611

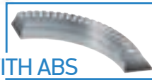
BMC - BELDE OTOBÜS (ABS) ARKA FREN DİSKİ



OEM

57RS305298

WITH ABS



Pos	A	B	H	C	I	N	Q
R	430	45	138	197	240	16	M12

NP-1703

FORD CARGO - 18.46 FREN DİSKİ



OEM

DC462A315AA

Pos	A	B	H	C	I	N	Q
F-R	434	45	130	203.5	237	10	M16 1.5



FLYWHEEL

Volan



FLYWHEELS

MERCEDES

NP-90103

309 (250 MM) KOMPLE VOLAN



OEM

3140302805

Pos A B H C I N Q

NP-90104

0302 (350 MM) KOMPLE VOLAN



OEM

3600300811 - 3270300211

Pos A B H C I N Q

NP-90105

355 (380 MM) KOMPLE VOLAN



OEM

3550301305 - 3550300905

Pos A B H C I N Q

NP-90106

355 TURBO (420 MM) KOMPLE VOLAN



OEM

3450300205

Pos A B H C I N Q

NP-90107

EURO 2 (420 MM) 6 YARGILI
KOMPLE VOLAN



OEM

4470301805 - 4470300705

Pos A B H C I N Q

NP-90108

(420 MM) KOMPLE VOLAN



OEM

4030301405 - 4030301105

Pos A B H C I N Q

NP-90109

(430 MM) KOMPLE VOLAN



OEM
4420300205

Pos A B H C I N Q

NP-90110

2517 - 2521 (350 MM) KOMPLE VOLAN



OEM
3520306605 - 3520307305

Pos A B H C I N Q

NP-90111

AXOR Y.M. (395 MM) 37 SENSÖR
KOMPLE VOLAN

OEM
9060301905

Pos A B H C I N Q

NP-90112

AXOR (430 MM) 37 YARGILI
KOMPLE VOLAN

OEM
4570300605

Pos A B H C I N Q

NP-90113

ATEGO 37 SENSÖR VOLAN



OEM
9060303205 - 9060303805

Pos A B H C I N Q

NP-90114

EURO 2 (430 MM) 6 YARGILI
KOMPLE VOLAN

OEM
4420301905 - 4420300505

Pos A B H C I N Q

MERCEDES

NP-90115

ACTROS (430 MM) 37 YARGILI
KOMPLE VOLAN



OEM

5410300105 - 5420300205

Pos A B H C I N Q

NP-90116

AXOR TIR (395 MM) 37 SENSÖR
KOMPLE VOLAN



OEM

9060304605

Pos A B H C I N Q

NP-90117

(380 MM) KOMPLE VOLAN



OEM

4030301305 - 4030301605

Pos A B H C I N Q

NP-90118

906 AXOR - ATEGO KOMPLE VOLAN



OEM

9060303005 - 9060303705

Pos A B H C I N Q

NP-90119

ATEGO (310 - 330 MM) VOLAN



OEM

3520303905 - 3440307205

Pos A B H C I N Q

NP-90121

2524 (380MM) VOLAN



OEM

3660300905 - 3760301305

Pos A B H C I N Q

MERCEDES - MAN

NP-90129

MERCEDES - (390 MM) VOLAN



OEM

4420302205 - 4420300605

Pos A B H C I N Q

NP-90130

MERCEDES - EURO 3 / 37 OKUYUCU
SENSÖR YAYLI (430 MM) VOLAN

OEM

6594000007 - 4570301305 - 4570302105

Pos A B H C I N Q

NP-90203

MAN - (420 MM) KOMPLE VOLAN



OEM

51023017300 - 51023017293

Pos A B H C I N Q

NP-90204

MAN - (430 MM) KOMPLE VOLAN



OEM

51023017414

Pos A B H C I N Q

NP-90205

MAN - EURO 2 (430 MM) 5 YARGILI
KOMPLE VOLAN

OEM

51023017439

Pos A B H C I N Q

NP-90206

MAN - EURO 2 (430 MM) 6 YARGILI
KOMPLE VOLAN

OEM

51023017440 - 51023016033

Pos A B H C I N Q

MAN

NP-90207

TGA 19.430 EURO 3 (430 MM) 58 SENSÖR
KOMPLE VOLAN



OEM

51023015258 - 51023013285 - 51023015210

Pos A B H C I N Q

NP-90208

26.230 - 270 (395 MM) KOMPLE VOLAN



OEM

51023010086 - 51023017389

Pos A B H C I N Q

NP-90209

12.153.163 (330 MM) KOMPLE VOLAN



OEM

51023015109 - 51023010469

Pos A B H C I N Q

NP-90210

12.153 (330 MM) 4 YARGILI
KOMPLE VOLAN



OEM

51023015184

Pos A B H C I N Q

NP-90211

TGA (430 MM) 58 SENSÖR VOLAN



OEM

51023015209

Pos A B H C I N Q

NP-90212

TGA (430 MM) 58 SENSÖR VOLAN



OEM

51023015210

Pos A B H C I N Q

NP-90213

TGA (430 MM) 58 SENSÖR VOLAN



OEM
51023015259

Pos A B H C I N Q

NP-90216

32.270 (395 MM) 6 YARGI VOLAN



OEM
51023015121

Pos A B H C I N Q

NP-90220

32.242 - 32.302 (400 MM) VOLAN



OEM
51023017410 - 51023015045

Pos A B H C I N Q

NP-90221

SL 232 (430 MM) 6 YARGILI VOLAN



OEM
51023013280 - 51023016050

Pos A B H C I N Q

NP-90230

MAN FORTUNA 37 OKUYUCU SENSÖR
YAYLI (430 MM) VOLAN



OEM
51023016044 - 11068877

Pos A B H C I N Q



RENAULT

NP-90402

RENAULT PREMIUM 400 VOLAN



OEM

5000686610

Pos A B H C I N Q

NP-90404

RENAULT 420 VOLAN



OEM

5010550772

Pos A B H C I N Q

NP-90405

RENAULT 440 VOLAN



OEM

7420895903

Pos A B H C I N Q

NP-90406

RENAULT 270 VOLAN



OEM

5010450325

Pos A B H C I N Q

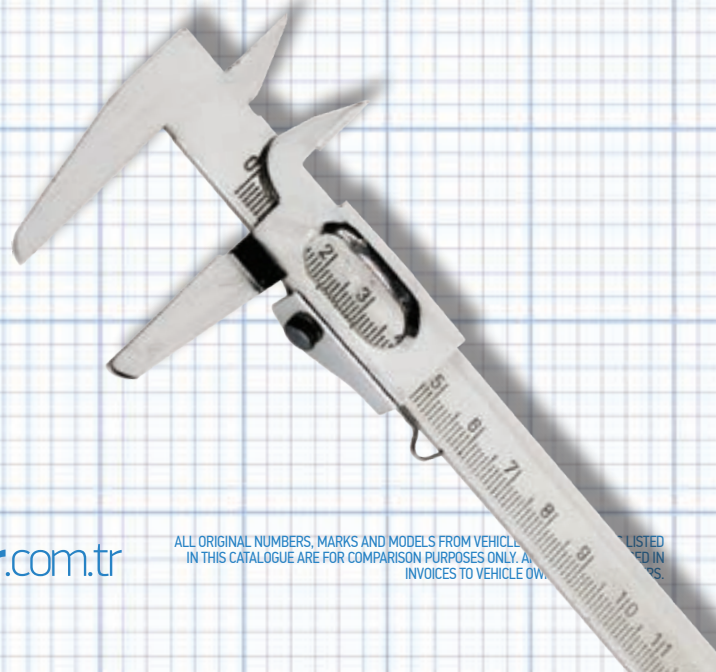
NP-90407

RENAULT - 280 VOLAN



OEM

Pos A B H C I N Q



NP-90502

IVECO (420 MM) KOMPLE VOLAN



OEM

4840992 - 4852529

Pos A B H C I N Q

NP-90503

IVECO TRAKKER - TEHC (430 MM)
KOMPLE VOLAN



OEM

98426708 - 99438938

Pos A B H C I N Q

NP-90504

IVECO (430 MM) VOLAN



OEM

4699030

Pos A B H C I N Q

NP-90505

50 NC Y.M. - 65/9 - 35/9 VOLAN (DİŞLİLİ)



OEM

4797424

Pos A B H C I N Q

NP-90506

85/12 - 120/14 VOLAN 6 İLERİ (DİŞLİLİ)



OEM

4846996

Pos A B H C I N Q

NP-90507

85/12 VOLAN 5 İLERİ (DİŞLİLİ)



OEM

4819281

Pos A B H C I N Q

IVECO - ISUZU

NP-90510

IVECO - 6 SİLİNDİR (430 MM) VOLAN



OEM
4792154

Pos A B H C I N Q

NP-90512

IVECO - PYTO (430 MM) VOLAN



OEM
8850750

Pos A B H C I N Q

NP-90803

ISUZU - ŞAMPİYON E.M. VOLAN (DİŞLİLİ)



OEM
897330893001

Pos A B H C I N Q

NP-90804

ISUZU - ŞAMPİYON Y.M. VOLAN (DİŞLİLİ)



OEM
8973308930

Pos A B H C I N Q

NP-90806

ISUZU - NQR VOLAN



OEM
897166516

Pos A B H C I N Q

NP-90807

ISUZU - NQR YENİ MODEL VOLAN



OEM
8973262272

Pos A B H C I N Q

ISUZU - MITSUBISHI - DAF - SCANIA

NP-90809

ISUZU - CITYBUS VOLAN



OEM

898056355251

Pos A B H C I N Q

NP-90812

ISUZU - NLR VOLAN



OEM

898012825151

Pos A B H C I N Q

NP-90901

MITSUBISHI - 659 VOLAN



OEM

ME240067 - ME012549

Pos A B H C I N Q

NP-91102

DAF - ESKİ MODEL VOLAN



OEM

Pos A B H C I N Q

NP-91303

SCANIA - 124 DSC 12 (430 MM) VOLAN



OEM

1388326 - 1465411

Pos A B H C I N Q

NP-91304

SCANIA - 124 DSC 12 (430 MM)
58 SENSÖR VOLAN

OEM

1487558

Pos A B H C I N Q

SCANIA - VOLVO

NP-91306

SCANIA - 111-112 DSC 9-11
(420 MM) VOLAN



OEM
324640

Pos A B H C I N Q

NP-91308

SCANIA - 113 DSC 12-13 (420 MM) VOLAN



OEM
393151

Pos A B H C I N Q

NP-91403

VOLVO - FH 12 VOLAN



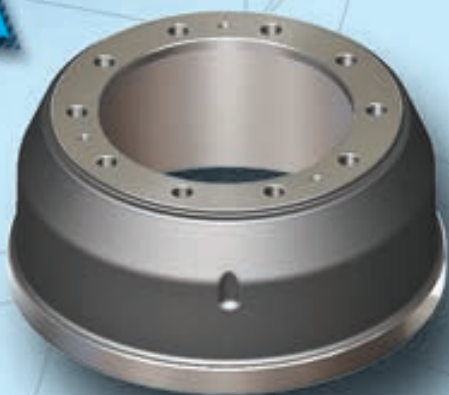
OEM
8170798 - 20729327

Pos A B H C I N Q

Please follow
our website
to screen
upcoming products

BRAKE DRUM

Kampana



BRAKE DRUMS

MERCEDES

NP-0151

0302 OTOBÜS KAMPANA



OEM

3544210001 - 3544210101 - 3544210301 - 3544210401

Pos	A	B	H	C	I	N	Q
F	418	155	240	298	335	10 3	23 M12

NP-0157

0302 S - 0303 V6 OTOBÜS KAMPANA



OEM

3054210001 - 3834230201

Pos	A	B	H	C	I	N	Q
F	410	175	228	298	335	10 2 2	23 13 M12

NP-0158

0303 V8 OTOBÜS 1924 - 2232 - 2517
DİNGİL KAMPANA



OEM

3014230301 - 3814230201 - 3864210001 - 3644210001

Pos	A	B	H	C	I	N	Q
F AXLE	410	174	238	298	335	10 3	23 M12

NP-0159

0302 S - 0303 - 0304 - 0305 - 0307 - 0309
V6 - V8 OTOBÜS KAMPANA



OEM

3014230001 - 3014230801 - 3014230901 - 3014231201

Pos	A	B	H	C	I	N	Q
R	410	238	306	298	335	10 3	23 M12

NP-0160

2626 - 2628 - 2632 - 2636 KAMPANA



OEM

3464230001 - 3464230601

Pos	A	B	H	C	I	N	Q
R	410	172	270	298	335	10 5 3	23 24 M12

NP-0161

2232 - 2622 - 2629 - 3031 KAMPANA

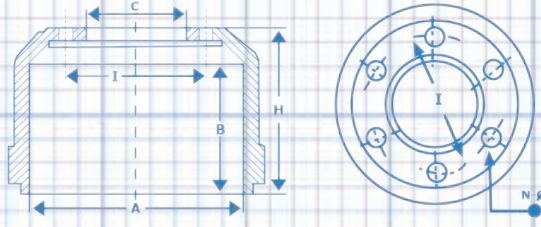


OEM

3464230501 - 3464230101

Pos	A	B	H	C	I	N	Q
R	410	193	280	298	335	10 5 3	23 24 M12

A : Balata Çapı - Diameter Inside
B : Balata Boyu - Brake Surface
H : Komple Boy - Total Height
C : Göbek Çapı - Hub Diameter
I : Delik Merkezi - Distance Between Holes
N : Delik Sayısı - Hole Quantity
Q : Delik Çapı - Hole Diameter



F : FRONT
R : REAR
T : TRAILER

MERCEDES

NP-0162

2521 - 2524 KAMPANA



OEM

6244210201 - 6584210001

Pos	A	B	H	C	I	N	Q
F	410	191	237	298	335	10 3	23 M12

NP-0163

2521 - 2524 - 1626 KAMPANA



OEM

6174230101

Pos	A	B	H	C	I	N	Q
R	410	235	300	298	335	10 5 3	23 24 M12

NP-0164

2521 - 2524 İLAVE DİNGİL
18 BL KAMPANA



OEM

6174230201

Pos	A	B	H	C	I	N	Q
R	410	192	248	298	335	10 3	23 M12

NP-0165

2517 - 2622 - 2232 - 2626 KAMPANA



OEM

3054210401 - 3054210101

Pos	A	B	H	C	I	N	Q
F	410	167	212	298	335	10 2 3	23 13 M12

NP-0166

2517 - 1617 KAMPANA



OEM

3854230301 - 3854230101

Pos	A	B	H	C	I	N	Q
R	410	192	248	298	335	10 3	23 M12

NP-0167

2517 ÖZEL SOĞUTMALI KAMPANA



OEM

3854250301

Pos	A	B	H	C	I	N	Q
R	410	235	280	298	335	10	23

MERCEDES

NP-0169

2521 - 2524 ÖZEL KAMPANA



OEM

Pos	A	B	H	C	I	N	Q
R	410	250	316	298	335	10 5 3	23 24 M12

NP-0170

305 - 307 EUROPA 4044 MRC
ACHSE KAMPANA



OEM

3054230301 - 3054230401 - 3054230701

Pos	A	B	H	C	I	N	Q
R	410	238	306	298	335	10 5 3	23 24 M12

NP-0173

0345 CONNECTO EURO 3 KAMPANA



OEM

0004230701 - 8252019174 - 4462422131 - 33164098

Pos	A	B	H	C	I	N	Q
R	410	231	275.5	282	335	10 2 2	23 M16 M14

NP-0174

0345 CONNECTO EURO 3 SOĞUTMALI
ÖZEL KAMPANA



OEM

Pos	A	B	H	C	I	N	Q
R	410	231	275.5	282	335	10 2 2	23 M16 M14

NP-0175

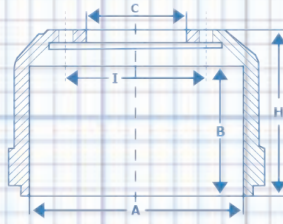
2517 - 2622 - 2232 - 2626 ÖZEL
SOĞUTMALI KAMPANA



OEM

Pos	A	B	H	C	I	N	Q
F	410	167	212	298	335	10 2 3	23 13 M12

A : Balata apı - Diameter Inside
B : Balata Boyu - Brake Surface
H : Komple Boy - Total Height
C : Gbek apı - Hub Diameter
I : Delik Merkezi - Distance Between Holes
N : Delik Sayısı - Hole Quantity
Q : Delik apı - Hole Diameter



F : FRONT
R : REAR
T : TRAILER

MERCEDES

NP-0190

MB KISA PORYALI KAMPANA

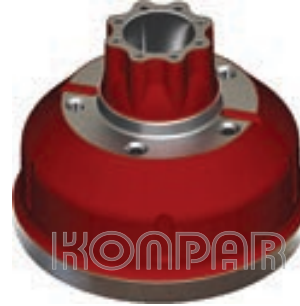


OEM
 6843344404

Pos	A	B	H	C	I	N	Q
F	320	122	182		208	5	19

NP-0191

MB UZUN PORYALI KAMPANA



OEM
 6843564102

Pos	A	B	H	C	I	N	Q
R	320	121	295		208	5 8	19 M12

NP-0194

MB 800 E.M. 181 MM



OEM

Pos	A	B	H	C	I	N	Q
F-R	325	118.5	181	160	205	6 3 3	18.5 M12 10.5/28

NP-0195

MB 800 Y.M. 200 MM



OEM
 3713347204

Pos	A	B	H	C	I	N	Q
F-R	325	128	200	160	205	6 3 3	18.5 M12 10.5/28

NP-0196

MB 240 KAMPANA



OEM
 6884230001

Pos	A	B	H	C	I	N	Q
R	325	118	185	170	205	6 3	19 M12

In some cases
 to be able to stop is much
 more important
 than accelerating...

MAN

NP-0253

20190 - 22190 - 26280 - 26281 - 26320
SL 200 - SG 220 KAMPANA



OEM

81501100226 - 81501100147 - 81501100108 - 81501100231

Pos	A	B	H	C	I	N	Q
F	410	167	212	298	335	10 2 3	23 13 M12

NP-0254

20190 - 19240 - 32230 - 26280 KAMPANA



OEM

81501100102

Pos	A	B	H	C	I	N	Q
R	410	172	270	298	335	10 5 3	23 24 M12

NP-0255

22190 - 26240 - 30190 - 26281 KAMPANA



OEM

81501100101 - 81501100134 - 81501103101

Pos	A	B	H	C	I	N	Q
R	410	193	280	298	335	10 5 3	23 24 M12

NP-0256

SL 200 - SG 220 - SR 240 - SR 280
SÜPER MAN 26230 - 26240 - 26270 - 32240



OEM

81501100144 - 81501100107 - 81501100104 - 81501103144
81501109144

Pos	A	B	H	C	I	N	Q
R	410	235	300	298	335	10 5 3	23 24 M12

NP-0257

19230 - 26230 - SG 220 OTOBÜS KAMPANA

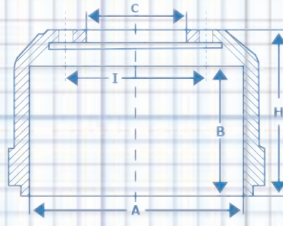


OEM

81501100232 - 81501100214 - 81501100227

Pos	A	B	H	C	I	N	Q
F-R	410	186	232	298	335	10 2 3	23 13 M12

A : Balata Çapı - Diameter Inside
 B : Balata Boyu - Brake Surface
 H : Komple Boy - Total Height
 C : Göbek Çapı - Hub Diameter
 I : Delik Merkezi - Distance Between Holes
 N : Delik Sayısı - Hole Quantity
 Q : Delik Çapı - Hole Diameter



F : FRONT
 R : REAR
 T : TRAILER

RENAULT

NP-0453

RENAULT MAGNUM KAMPANA



OEM

194435 - 192371 - 5000737768

Pos	A	B	H	C	I	N	Q
F-R	414	182.5	234	280.5	335	10 2 2	25 M14 13.5/22

NP-0454

RENAULT KAMPANA



OEM

Pos	A	B	H	C	I	N	Q
F	414	175	222	281	335	10 2 2	25 13/22 M16

NP-0455

RENAULT PREMIUM KAMPANA



OEM

5010098949

Pos	A	B	H	C	I	N	Q
R	414	230	276.5	281	335	10 2 2	25 13/22 M16



Please follow
 our website
 to screen
 upcoming products

Konpar.com.tr

BRAKE DRUMS

IVECO - MITSUBISHI

NP-0552

EURO TRAKKER EUROTECH KAMPANA



OEM

7172329

Pos	A	B	H	C	I	N	Q
F	410	194	249	285	335	10 2 2	23 12 M12

NP-0553

EURO TRAKKER KAMPANA



OEM

42118427 - 42102583

Pos	A	B	H	C	I	N	Q
R	410	220	283	285	335	10 2 2	23 12.5 M12

NP-0556

EUROSTAR KAMPANA



OEM

7172079 - 7183047

Pos	A	B	H	C	I	N	Q
R	410	201	258	285	335	10 2 2	23 M12 32/12.5

NP-0561

EUROCARGO 250 E 24 KAMPANA



OEM

1740003-E

Pos	A	B	H	C	I	N	Q
R	395	198	276.5	285	335	10 2 2	23 M12 11

NP-0953

MITSUBISHI - MARATON YENİ MODEL PRENSES ÖN KAMPANA



OEM

MC 826885

Pos	A	B	H	C	I	N	Q
F	410	170	200	290	335	10	25

NP-0954

MITSUBISHI - MARATON YENİ MODEL PRENSES ARKA KAMPANA

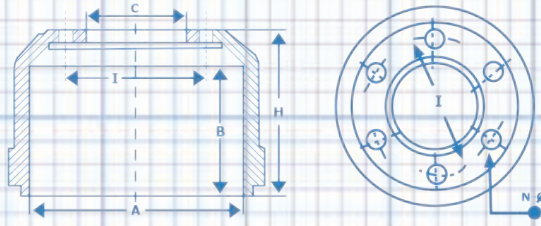


OEM

MC828296

Pos	A	B	H	C	I	N	Q
R	410	230	256	290	335	10	25

A : Balata Çapı - Diameter Inside
B : Balata Boyu - Brake Surface
H : Komple Boy - Total Height
C : Göbek Çapı - Hub Diameter
I : Delik Merkezi - Distance Between Holes
N : Delik Sayısı - Hole Quantity
Q : Delik Çapı - Hole Diameter



F : FRONT
R : REAR
T : TRAILER

BPW

NP-1049

BPW - FREN KAMPANASI (285 MM)



OEM

Pos	A	B	H	C	I	N	Q
T	420	221	280	290	335	10	23

NP-1050

BPW - FREN KAMPANASI



OEM

310677630

Pos	A	B	H	C	I	N	Q
T	420	228	297	290	335	10	23

NP-1051

BPW - FREN KAMPANASI (308 MM)



OEM

0310677110

Pos	A	B	H	C	I	N	Q
T	420	224	308	290	335	10	23



Konpar.com.tr

BRAKE DRUMS

BPW - SAF

NP-1052

DOSTAŞ DORSE KAMPANA



OEM

03.106.77.52.0 - 03.109.77.72.0

Pos	A	B	H	C	I	N	Q
T	420	225	284	290	335	10	23

NP-1053

BPW KISA ÇAKMA KAMPANA



OEM

03.109.67.19.0

Pos	A	B	H	C	I	N	Q
T	420	204	226	290	335	10	23

NP-1054

BPW KISA SOMUNLU KAMPANA



OEM

03.106.67.62.0 - 03.109.67.13.0 - 03.109.67.82.0

Pos	A	B	H	C	I	N	Q
T	420	200	226	290	335	10	23

NP-1057

BPW UZUN ÇAKMA KAMPANA



OEM

03.109.77.17.0

Pos	A	B	H	C	I	N	Q
T	420	220	258	290	335	10	23

NP-1058

BPW UZUN SOMUNLU KAMPANA



OEM

03.109.77.17.0

Pos	A	B	H	C	I	N	Q
T	420	220	258	290	335	10	23

NP-1059

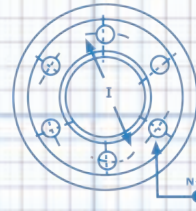
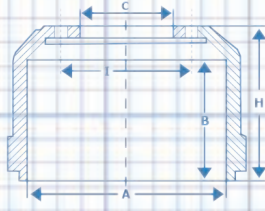
BPW - İSPİT 6 DELİK KAMPANA



OEM

Pos	A	B	H	C	I	N	Q
T	420	220	258	290	335	6	20

A : Balata apı - Diameter Inside
B : Balata Boyu - Brake Surface
H : Komple Boy - Total Height
C : Gbek apı - Hub Diameter
I : Delik Merkezi - Distance Between Holes
N : Delik Sayısı - Hole Quantity
Q : Delik apı - Hole Diameter



F : FRONT
R : REAR
T : TRAILER

OSMAN KO - BPW - SAF

NP-1065

OSMAN KO - DİNGİL 6 DELİK KAMPANA



OEM

Pos	A	B	H	C	I	N	Q
T	420	231.5	262	290	335	6	20

NP-1066

OSMAN KO - K-1 10 DELİK KAMPANA



OEM

Pos	A	B	H	C	I	N	Q
T	420	231	262	290	335	10	24

NP-1071

SAF DORSE KAMPANA



OEM

1.064.0260.01 - 1.064.0260.02 - 1.064.0260.00

Pos	A	B	H	C	I	N	Q
T	420	205	227	300	335	10	23

NP-1085

FRUEHAUF KAMPANA



OEM

AJB0465002 - M003176

Pos	A	B	H	C	I	N	Q
T	420	213	256	288	335	10 2 2	26 12/26 M12

NP-1092

42 X 22 PİLOT



OEM

Pos	A	B	H	C	I	N	Q
T	420	230	280	280	335	10 3	23 12.5/32

NP-1093

42 X 20 PİLOT KAMPANA



OEM

Pos	A	B	H	C	I	N	Q
T	420	212	260	280	335	10 3	23 12.5/32

OTOYOL - YORK - DAF

NP-1095

OTOYOL - YORK - 265 MM KAMPANA



OEM

Pos	A	B	H	C	I	N	Q
T	394	230	265	282	335	10 2 2	23 28/12.5 M14

NP-1096

OTOYOL - YORK - 274 MM KAMPANA



OEM

Pos	A	B	H	C	I	N	Q
T	394	234	274	282	335	10 2 2	23 28/12.5 M14

NP-1097

OTOYOL - YORK - 280 MM KAMPANA



OEM

Pos	A	B	H	C	I	N	Q
T	394	240	280	282	335	10 2 2	23 28/12.5 M14

NP-1153

DAF - F85 - F95 ÖN KAMPANA



OEM

284620 - 1233462 - 094903 - 595225

Pos	A	B	H	C	I	N	Q
F	420	171	228	285	335	10 4 2	23 28/13.5 M12

NP-1154

DAF - F85 - F95 ARKA KAMPANA



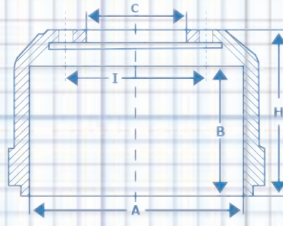
OEM

365579 - 754397

Pos	A	B	H	C	I	N	Q
R	420	216	288	285	335	10 2 2	24 14/28 M12

Biz
bu yollara
beraber çıktık

A : Balata apı - Diameter Inside
B : Balata Boyu - Brake Surface
H : Komple Boy - Total Height
C : Gbek apı - Hub Diameter
I : Delik Merkezi - Distance Between Holes
N : Delik Sayısı - Hole Quantity
Q : Delik apı - Hole Diameter



F : FRONT
R : REAR
T : TRAILER

SETRA

NP-1251

SETRA - KISA KAMPANA



OEM

Pos	A	B	H	C	I	N	Q
F	420	192	261	290	335	10 2	21 M16

NP-1252

SETRA - UZUN KAMPANA



OEM

179252011411 - 179252011311

Pos	A	B	H	C	I	N	Q
R	410	230	281	290	335	10 2	23 M16

NP-1253

SETRA - DİNGİL KAMPANA



OEM

179241111406

Pos	A	B	H	C	I	N	Q
R	410	170	235	290	335	10 2	23 M16



BRAKE DRUMS

Konpar.com.tr

SCANIA

NP-1351

SCANIA - 112 - 124 ESKİ TİP KAMPANA



OEM

360570 - 285894

Pos	A	B	H	C	I	N	Q
F	413	190	263	295	335	10 3	23 M12

NP-1353

SCANIA - 113 ÖN KAMPANA



OEM

392390

Pos	A	B	H	C	I	N	Q
F	413	190	253	295	335	10 2 3	23.5 13 M12

NP-1354

SCANIA - 113 ARKA KAMPANA



OEM

293543 - 342880 - 360573 - 1385893 - 1414435

Pos	A	B	H	C	I	N	Q
R	413	270	320	295	335	10 3 2	23.5 M12 13

NP-1355

SCANIA - 113 - 93 - 94 - 114 KAMPANA

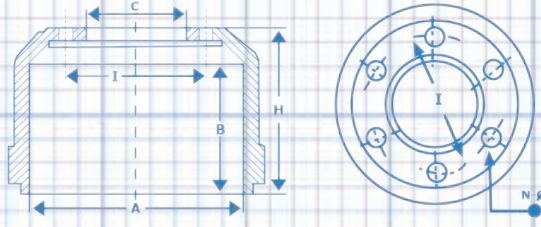


OEM

1361331 - 1414153 - 1333117

Pos	A	B	H	C	I	N	Q
F	413	213	275	295	335	10 3	23 M12

A : Balata Çapı - Diameter Inside
B : Balata Boyu - Brake Surface
H : Komple Boy - Total Height
C : Göbek Çapı - Hub Diameter
I : Delik Merkezi - Distance Between Holes
N : Delik Sayısı - Hole Quantity
Q : Delik Çapı - Hole Diameter



F : FRONT
R : REAR
T : TRAILER

VOLVO

NP-1452

VOLVO - F10 - F12 ESKİ MODEL KAMPANA



OEM
 366866

Pos	A	B	H	C	I	N	Q
R	395	216	289	282	335	10 2 2	28 13.5 M12

NP-1454

VOLVO - F10 - FL10 POWER KAMPANA



OEM
 1599009

Pos	A	B	H	C	I	N	Q
F	410	195	262	282	335	10 2 2	28 13 M20

NP-1456

VOLVO - F10 - FL10 - N10 KAMPANA



OEM
 1599011

Pos	A	B	H	C	I	N	Q
R	410	215	294	282	335	10 2 2	28 13 M20

NP-1457

VOLVO - FL12 - F12 - N12 - FH16 KANALLI KAMPANA



OEM
 1599012

Pos	A	B	H	C	I	N	Q
R	410	230	307	282	335	10 2 2	28 18 M20

NP-1458

VOLVO - F10 - FL10 - N10 KANALLI KAMPANA



OEM

Pos	A	B	H	C	I	N	Q
R	410	218	293	282	335	10 2 2	28 13 M20

NP-1461

VOLVO - FM - 9 KAMPANA



OEM
 1075306 - 3171744

Pos	A	B	H	C	I	N	Q
F	410	200	260	282	335	10 2 2	28 18 M20

VOLVO

NP-1462

VOLVO - FM-9 ÇEKİCİ KAMPANA



OEM

1075310 - 3171748

Pos	A	B	H	C	I	N	Q
R	410	225	307	282	335	10 2 2	28 18 M20

NP-1463

VOLVO - FM-9 DİNGİL KAMPANA



OEM

1075311 - 1599013

Pos	A	B	H	C	I	N	Q
R	410	143	207	282	335	10 2 2	28 18 M20

NP-1465

VOLVO - FH - 12 KAMPANA



OEM

1599968

Pos	A	B	H	C	I	N	Q
F	410	195	218.5	290	335	6	16

NP-1466

VOLVO - FH - 12 ÇEKİCİ DİNGİL KAMPANA



OEM

1075309 - 3171747

Pos	A	B	H	C	I	N	Q
R	410	210	294	282	335	10 2 2	28 18 M20

NP-1471

VOLVO - OTOBÜS ÖN KAMPANA



OEM

1134817

Pos	A	B	H	C	I	N	Q
F	394	219	269	282	335	10 2	28 M12

NP-1472

VOLVO - OTOBÜS ARKA KAMPANA

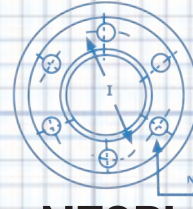
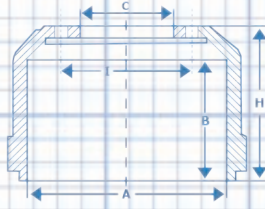


OEM

1590313 - 1134818

Pos	A	B	H	C	I	N	Q
R	394	265	314	282	335	10 2	28 M12

A : Balata apı - Diameter Inside
B : Balata Boyu - Brake Surface
H : Komple Boy - Total Height
C : Gbek apı - Hub Diameter
I : Delik Merkezi - Distance Between Holes
N : Delik Sayısı - Hole Quantity
Q : Delik apı - Hole Diameter



F : FRONT
R : REAR
T : TRAILER

NEOPLAN - FATİH - BMC

NP-1553

NEOPLAN - KAMPANA



OEM

0004230701 - 8252019174 - 4462422131 - 33164098

Pos	A	B	H	C	I	N	Q
R	410	231	275.5	282	335	10 2 2	23 M10 M14

NP-1554

NEOPLAN - SOĞUTMALI KAMPANA



OEM

Pos	A	B	H	C	I	N	Q
R	410	231	275.5	282	335	10 2 2	23 M16 M14

NP-1651

FATİH - BMC - 16222 - 16225
FATİH KAMPANA



OEM

K8C1008

Pos	A	B	H	C	I	N	Q
F-R	394	194	236	290	335	10 2 2	24 28/12 M12

NP-1653

FATİH - BMC - 170.25 FATİH KAMPANA



OEM

5K56770

Pos	A	B	H	C	I	N	Q
F-R	410	211	258	290	335	10 2 3	23.5 11/23.5 M14

NP-1655

FATİH - BMC - 20026 FATİH İNTERCOL
İNCE FLANŞ KAMPANA



OEM

5K18782

Pos	A	B	H	C	I	N	Q
F-R	410	211	258	285	335	10 2 3	28 28/11 M14

NP-1656

FATİH - BMC - 20026 FATİH İNTERCOL
KALIN FLANŞ KAMPANA



OEM

5K88968 - 5K59690

Pos	A	B	H	C	I	N	Q
F-R	410	211	264	285	335	10 2 3	28 28/11 M14

FATİH - BMC

NP-1657

FATİH - BMC - 20026 FATİH INTERCOL
KALIN FLANŞ SOĞUTMALI KAMPANA



OEM
5K88968

Pos	A	B	H	C	I	N	Q
F-R	410	211	264	285	335	10 2 2	28 28/11 M14

NP-1658

FATİH - BMC - 22026 DEV FATİH
İNCE FLANŞ KAMPANA



OEM
5K16448

Pos	A	B	H	C	I	N	Q
F-R	410	213	272	285	335	10 2 3	28 28/11 M14

NP-1659

FATİH - BMC - 22026 DEV FATİH
KALIN FLANŞ KAMPANA



OEM
5K87972

Pos	A	B	H	C	I	N	Q
F-R	410	220	272	285	335	10 2 3	28 28/11 M14

NP-1660

FATİH - BMC - 22026 DEV FATİH
KALIN FLANŞ KAMPANA



OEM
5K87972 - 5K59565

Pos	A	B	H	C	I	N	Q
F-R	410	214	272	285	335	10 2 3	28 28/11 M14

NP-1661

FATİH - BMC - 27026 DEV FATİH
SOĞUTMALI KAMPANA



OEM
5K60512

Pos	A	B	H	C	I	N	Q
F-R	410	230	285	285	335	10 2 3	28 28/11 M14

NP-1662

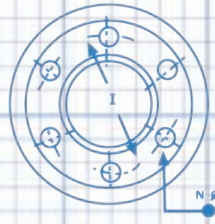
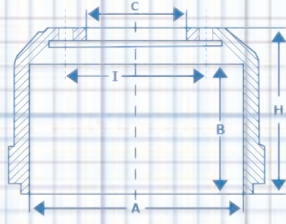
FATİH - BMC - 620 - 617 PROFESYONEL
KAMPANA



OEM
5K88968

Pos	A	B	H	C	I	N	Q
F-R	410	211	264	285	335	10 2 2	28 28/11 M14

A : Balata apı - Diameter Inside
B : Balata Boyu - Brake Surface
H : Komple Boy - Total Height
C : Gbek apı - Hub Diameter
I : Delik Merkezi - Distance Between Holes
N : Delik Sayısı - Hole Quantity
Q : Delik apı - Hole Diameter



F : FRONT
R : REAR
T : TRAILER

FATİH - BMC

NP-1663

FATİH - BMC - 822 - 827
PROFESYONEL KAMPANA



OEM
5K87972

Pos	A	B	H	C	I	N	Q
F-R	410	214	272	285	335	10 2 3	28 28/11 M14

NP-1664

FATİH - BMC - 827 PROFESYONEL
YENİ MODEL KAMPANA



OEM
5K60512

Pos	A	B	H	C	I	N	Q
F-R	410	230	285	285	335	10 2 3	28 28/11 M14

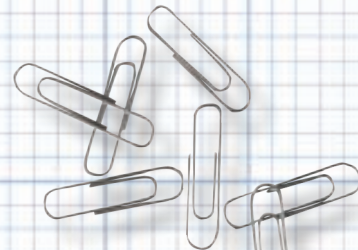
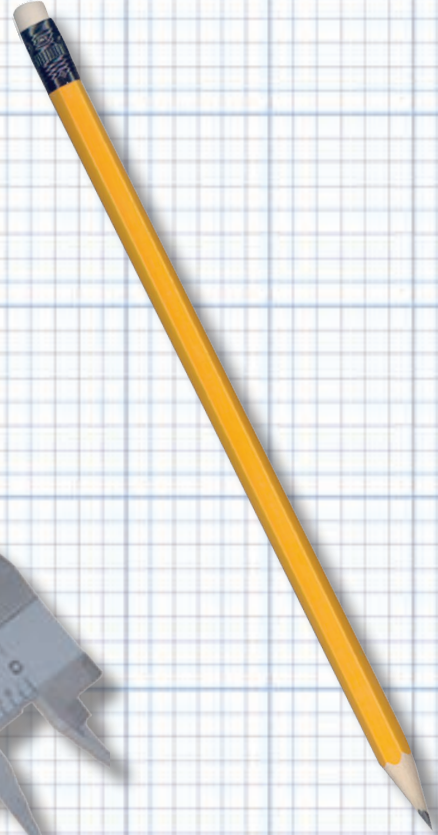
NP-1665

FATİH - BMC - 22017 BELDE
OTOBÜS KAMPANA



OEM
5K87972

Pos	A	B	H	C	I	N	Q
F-R	410	214	272	285	335	10 2 3	28 28/11 M14



Konpar.com.tr

FORD - DODGE CHRYSLER

NP-1751

FORD - 2014 - 2517 TURBO
CARGO ÖN KAMPANA



OEM

6126495 - 82DB1125AA

Pos	A	B	H	C	I	N	Q
F	394	229.5	260.5	281	335	10 4	25 32/14

NP-1752

FORD - 2014 - 2517 TURBO
CARGO ARKA KAMPANA



OEM

81DB1126BB - 1502024

Pos	A	B	H	C	I	N	Q
R	394	194	226	279.5	335	10	20

NP-1754

FORD - 2520 CARGO INTERCOL
ÖN KAMPANA



OEM

85DB1125AB

Pos	A	B	H	C	I	N	Q
F	394	243	274	281	335	10 4 4	25 32/14 M14

NP-1755

FORD - 2520 CARGO INTERCOL
ARKA KAMPANA



OEM

85DB1126AA

Pos	A	B	H	C	I	N	Q
R	394	215	250.5	279.5	335	10	20

NP-1757

FORD - 3227 CARGO
ŞAHİN BAKIŞLI KAMPANA



OEM

85DB1125AB

Pos	A	B	H	C	I	N	Q
R	394	243	274	281	335	10 4 4	25 32/14 M14

NP-1854

DODGE CHRYSLER - AS900 - 950
KAMPANA

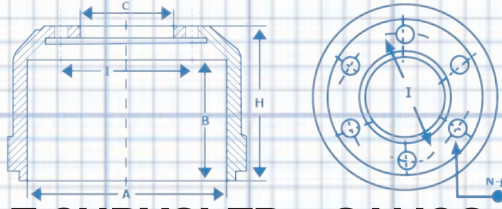


OEM

4833T - 20949PE

Pos	A	B	H	C	I	N	Q
R	420	190	260	280	335	10 3 3	23 28/14 M12

A : Balata Çapı - Diameter Inside
B : Balata Boyu - Brake Surface
H : Komple Boy - Total Height
C : Göbek Çapı - Hub Diameter
I : Delik Merkezi - Distance Between Holes
N : Delik Sayısı - Hole Quantity
Q : Delik Çapı - Hole Diameter



F : FRONT
R : REAR
T : TRAILER

DODGE CHRYSLER - SANOS - HOVA - NISSAN

NP-1856

DODGE CHRYSLER -
AS26.260 - AS950 KAMPANA



OEM
20949PE - 23504T

Pos	A	B	H	C	I	N	Q
R	420	190	260	286	335	10 3 3	23 28/14 M12

NP-1857

DODGE CHRYSLER - AS26235 AS32260
KAMPANA



OEM
16724PE - 23503

Pos	A	B	H	C	I	N	Q
F	420	190	245	286	335	10 3 3	23 M12 14

NP-1858

DODGE CHRYSLER - AS26235 AS32260
KAMPANA



OEM
23799T - 24534TP

Pos	A	B	H	C	I	N	Q
R	420	215	282	286	335	10 3 3	23 14 M12

NP-5020

SANOS - KAMPANA



OEM
K007113341031

Pos	A	B	H	C	I	N	Q
R	420	195	273	282	335	10 2 4	23 13.5/22 M12

NP-5025

HOVA - KAMPANA



OEM

Pos	A	B	H	C	I	N	Q
R	420	200	278	282	335	10 2 2	24 M10 12

NP-5028

NISSAN - TIR KAMPANA



OEM
060415Y

Pos	A	B	H	C	I	N	Q
T	410	229	280	282	335	10 3 5	23 M12 11

FIAT IVECO

NP-0501

50 NC ESKİ MODEL ÖN KAMPANA



OEM

8547081 - 8546995 - 8546956

Pos	A	B	H	C	I	N	Q
F	324	86.5	113	248	270	8 2	12.5 8.5

NP-0502

50 NC ESKİ MODEL ARKA KAMPANA



OEM

8546971 - 8546957 - 8529683

Pos	A	B	H	C	I	N	Q
R	325	88	137	161	205	6 2 2	18.5 10.5 M10

NP-0503

50 NC ORTA MODEL KAMPANA



OEM

7160033 - 4707533

Pos	A	B	H	C	I	N	Q
F-R	325	88	114	255	280	6 4	12.5 M12

NP-0505

50 S YENİ MODEL M23 65/9 KAMPANA



OEM

4707532 - 7160035 - 7165361

Pos	A	B	H	C	I	N	Q
F-R	325	109	135	255	280	6 4	12.5 M12

NP-0506

8512 / 12014 KAMPANA



OEM

7160113 - 7165564 - 4715519

Pos	A	B	H	C	I	N	Q
R	325	128	158	255	280	6 4	12.5 M12

NP-0514

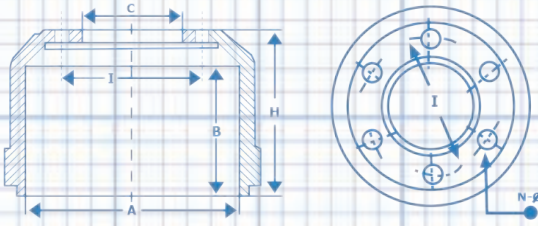
EUROCITY KAMPANA



OEM

7173970

Pos	A	B	H	C	I	N	Q
R	325	132	164	215	275	8 2	20 M10



A : Balata Çapı - Diameter Inside
 B : Balata Boyu - Brake Surface
 H : Komple Boy - Total Height
 C : Göbek Çapı - Hub Diameter
 I : Delik Merkezi - Distance Between Holes
 N : Delik Sayısı - Hole Quantity
 Q : Delik Çapı - Hole Diameter

F : FRONT
 R : REAR
 T : TRAILER

MAGIRUS - OTOKAR

NP-0601

MAGIRUS ESKİ MODEL KAMPANA



OEM
 1.100.00.5021

Pos	A	B	H	C	I	N	Q
F-R	325	87	124	163	205	6 2	19 M10

NP-0602

MAGIRUS YENİ MODEL KAMPANA



OEM
 12B1705021AA

Pos	A	B	H	C	I	N	Q
F-R	325	112	145.5	163	205	6 2	19 M10

NP-0603

MAGIRUS YENİ MODEL SOĞUTMALI KAMPANA



OEM
 12B1705021AA

Pos	A	B	H	C	I	N	Q
F-R	325	110	145.5	163	205	6 2	19 M10

NP-0606

SULTAN ESKİ MODEL KAMPANA



OEM
 13C15-05021AD

Pos	A	B	H	C	I	N	Q
F-R	324.5	141	205	170	205	6 3 3	18.5 M10 13.5

NP-0607

SULTAN ORTA MODEL KAMPANA



OEM
 13C0005021AD

Pos	A	B	H	C	I	N	Q
F-R	324.5	130	200	170	205	6 3 3	18.5 M10 13.5

NP-0608

SULTAN YENİ MODEL KAMPANA



OEM
 13C00050109AB

Pos	A	B	H	C	I	N	Q
F-R	324.5	126	192	170	205	6 3 3	18.5 M10 13.5

PEUGEOT - ISUZU

NP-0709

PEUGEOT J9 - FREN KAMPANASI



OEM

7930010848

Pos	A	B	H	C	I	N	Q
R	300	73.5	84	140	190	5 2 2	19 8 M6

NP-0801

ISUZU - NPR KAMPANA



OEM

428107376107 - 894.121.428.1-01 - 894121428107

Pos	A	B	H	C	I	N	Q
F-R	319	90	145	156	203	5 5	19.5 M6

NP-0802

ISUZU - NKR KAMPANA



OEM

542.315.037.2 - 51

Pos	A	B	H	C	I	N	Q
F-R	299	66	97	132	170	6 1	15 6

NP-0803

ISUZU - ŞAMPİYON KAMPANA



OEM

897.081.218.1 - 01

Pos	A	B	H	C	I	N	Q
F-R	319	116	157	156	222	6 3	23.5 M6

NP-0804

ISUZU - NQR TURKUAZ KAMPANA



OEM

897.102.001.1 - 51 - 897.188.016.0 - 51

Pos	A	B	H	C	I	N	Q
F-R	319	135	166	156	222	6	23.5

NP-0805

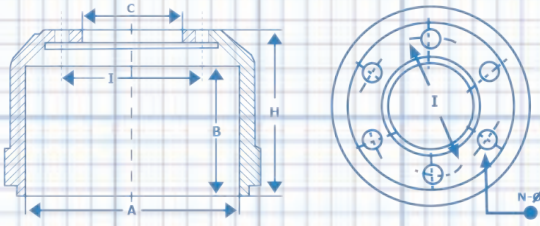
ISUZU - TURKUAZ YENİ MODEL KAMPANA



OEM

277.772.158.0 - 01

Pos	A	B	H	C	I	N	Q
F-R	324.5	138	166	156	222	6	23.5



A : Balata Çapı - Diameter Inside
 B : Balata Boyu - Brake Surface
 H : Komple Boy - Total Height
 C : Göbek Çapı - Hub Diameter
 I : Delik Merkezi - Distance Between Holes
 N : Delik Sayısı - Hole Quantity
 Q : Delik Çapı - Hole Diameter

F : FRONT
 R : REAR
 T : TRAILER

ISUZU

NP-0806

ISUZU - NQR TURKUVAZ SOĞUTMALI KAMPANA



OEM
 897102001 - 2 AV

Pos	A	B	H	C	I	N	Q
F-R	320	133	164.50	156	222	6	23.5

NP-0807

ISUZU - NKR 55 (LOW) KAMPANA



OEM
 897.169.8062.01

Pos	A	B	H	C	I	N	Q
R	239	276	122	132	184	6	16.5

NP-0808

ISUZU - NPR ŞAMPİYON EL FREN KAMPANA



OEM
 8941010571 - 8970339891

Pos	A	B	H	C	I	N	Q
	191	58	69	80	101	4	10.5
	191	58	69	80	101	4	12.5

NP-0811

ISUZU - EURO 4 KAMPANA



OEM
 387004990001

Pos	A	B	H	C	I	N	Q
R	324.5	162	188	156	222	6	23.5

NP-0812

ISUZU - NKR 55 ESKİ MODEL KAMPANA



OEM
 897085071

Pos	A	B	H	C	I	N	Q
F	299	85	102.5	132	170	2	M6
						6	15
						1	6.5

NP-0813

ISUZU - NKR 55 (LOW) YENİ MODEL KAMPANA



OEM
 897358857001

Pos	A	B	H	C	I	N	Q
F	299	87	139	132	170	6	16.5

ISUZU - TOYOTA - MITSUBISHI

NP-0816

ISUZU - NKR 55 ESKİ MODEL
(ÇİFT TEKER) KAMPANA



OEM

542315041201

Pos	A	B	H	C	I	N	Q
R	228	89	129	132	184	6	16.5

NP-0824

ISUZU - NLR 85 ÖN KAMPANA



OEM

897094434201

Pos	A	B	H	C	I	N	Q
F	300.5	91.5	156	142	203	5	21

NP-0825

ISUZU - NLR 85 ARKA KAMPANA



OEM

897184245201

Pos	A	B	H	C	I	N	Q
R	287	92	155	156	205	5	22

NP-0841

TOYOTA - KAMPANA



OEM

Pos	A	B	H	C	I	N	Q
	320	99.5	115	126	167	5	M14 1.5

NP-0901

MITSUBISHI - 659 PRESTİJ KAMPANA



OEM

MK 321338

Pos	A	B	H	C	I	N	Q
F-R	320	122	155	175	222	6 6	20 M8

NP-0902

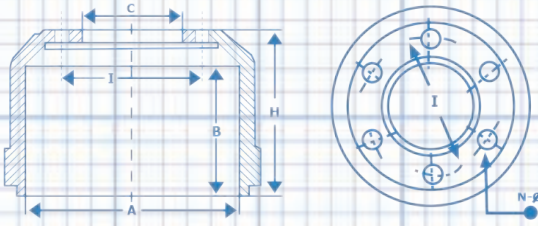
MITSUBISHI - 635 KAMPANA



OEM

MC 838284

Pos	A	B	H	C	I	N	Q
F-R	320	86	131	165	208	5	19



A : Balata Çapı - Diameter Inside
 B : Balata Boyu - Brake Surface
 H : Komple Boy - Total Height
 C : Göbek Çapı - Hub Diameter
 I : Delik Merkezi - Distance Between Holes
 N : Delik Sayısı - Hole Quantity
 Q : Delik Çapı - Hole Diameter

F : FRONT
 R : REAR
 T : TRAILER

mitsubishi - BMC

NP-0903

mitsubishi - 449 KAMPANA



OEM
 MC 112024

Pos	A	B	H	C	I	N	Q
F-R	320	105	155	175	222	6	20

NP-0904

mitsubishi - 444 KAMPANA



OEM
 MB 060504

Pos	A	B	H	C	I	N	Q
F-R	320	86	131	165	208	5	19

NP-0905

mitsubishi - 304 515 ÖN KAMPANA



OEM
 MB 060500

Pos	A	B	H	C	I	N	Q
F	300	75	91	140	180	6 2	16.5 M10

NP-0906

mitsubishi - 304 515 ARKA KAMPANA



OEM
 MT 327119

Pos	A	B	H	C	I	N	Q
R	300	72	130	140	180	6 2	16.5 M10

NP-1614

BMC - 3000 KAMPANA



OEM
 5M66346

Pos	A	B	H	C	I	N	Q
R	280	74	144	135	180	6 3	18.5 M10



HYUNDAI - NDR - ISUZU

NP-5040

HYUNDAI - KAMPANA



OEM

Pos	A	B	H	C	I	N	Q
F-R	320	116	142	179	222	6	19

NP-5054

NDR - ÖN KAMPANA



OEM

Pos	A	B	H	C	I	N	Q
F	300	88.5	157	156	203	5	20

NP-5055

NDR - ARKA KAMPANA



OEM

Pos	A	B	H	C	I	N	Q
R	300	192	157	156	203	5	22

NP-5058

ISUZU - OTOBÜS ESKİ MODEL
ÖN KAMPANA



OEM

8970347703

Pos	A	B	H	C	I	N	Q
F	320	90	144	156	203	5	22

NP-5059

ISUZU - OTOBÜS ESKİ MODEL
ARKA KAMPANA



OEM

8943856503

Pos	A	B	H	C	I	N	Q
R	320	95	163	156	203	5	22

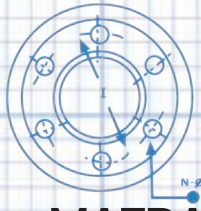
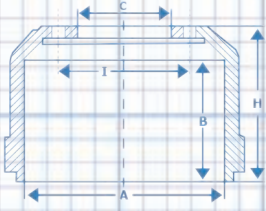
NP-5060

ISUZU - 5 TON ÖN KAMPANA



OEM

Pos	A	B	H	C	I	N	Q
F	300.5	91.5	142	156	203	5	21



A : Balata Çapı - Diameter Inside
 B : Balata Boyu - Brake Surface
 H : Komple Boy - Total Height
 C : Göbek Çapı - Hub Diameter
 I : Delik Merkezi - Distance Between Holes
 N : Delik Sayısı - Hole Quantity
 Q : Delik Çapı - Hole Diameter

F : FRONT
 R : REAR
 T : TRAILER

MAZDA - HASHIMBUS - DAIHATSU - TOYOTA

NP-5063

MAZDA - KAMPANA



OEM

Pos	A	B	H	C	I	N	Q
F-R	320	86.5	150	145	203	5 2 2	22.5 M8 16.5

NP-5065

HASHIMBUS - KAMPANA



OEM

Pos	A	B	H	C	I	N	Q
F-R	319	95.5	179	172	222	6 2 2	22.5 M8 9/25

NP-5066

DAIHATSU - KAMPANA



OEM

Pos	A	B	H	C	I	N	Q
F-R	320	89	130	144	203	5	17

NP-5092

TOYOTA - KAMPANA



OEM

Pos	A	B	H	C	I	N	Q
F-R	320	99	127.5	160	203	5	15

Sınırları aşan
 üretim gücü...



Konpar.com.tr

BRAKE DISC // WHEEL HUB // FLYWHEEL // BRAKE DRUM // FLYWHEEL HOUSING // WHEEL BOLT //





BRAKE PARTS // BRAKE DISC // WHEEL HUB // FLYWHEEL // BRAKE DRUM // FLYWHEEL HOUSING



KONPAR Dış Tic. Mak. ve Otom. San. Tic. Ltd. Şti.

FACTORY

Konya Organize Sanayi Bölgesi İhsandede Caddesi 20 Nolu Sokak No: 12
42050 • SELÇUKLU / KONYA
Phone : +90 (332) 239-1890 (pbx) • Fax : +90 (332) 239-1894
Email: iletisim@konpar.com.tr

BRANCH OFFICE

Dolapdere San. Sit. 1. Ada No: 18 • İKİTELLİ / İSTANBUL
Phone : +90 (212) 407-0349 // 407-0350 • Fax : +90 (212) 407-0348
Email : istanbul@konpar.com.tr

f /Konpar

t /KonparNews

DNC Workshop

WHEEL HUB // BRAKE DISC // FLYWHEEL // BRAKE DRUM // FLYWHEEL HOUSING // WHEEL BOLT // BRAKE PARTS