

2018
Product Catalog
Ürün Kataloğu

KONPAR

ISO/TS 16949

BUREAU VERITAS
Certification



DEĞİŞİME ÖNCÜLÜK EDİYORUZ



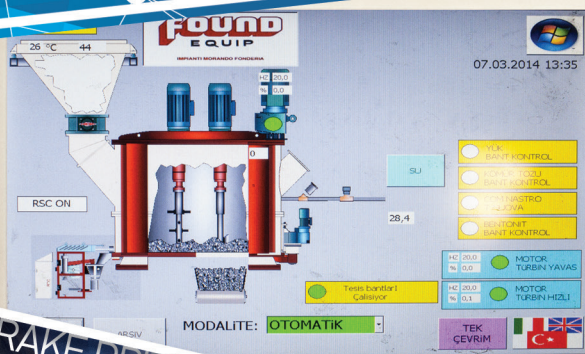
We have set
off together







- 1995 Market Analysis, Selection of Factory Location, Plant Design, Installation of Lines.
- 1996 R&D (Research and Development - Product Development) work completed, mass production of brake drums and wheel hubs began after test production and approval of test production results.
- 1999 Brake disc manufacturing started
- 2004 We started the ISO 9001 Quality Management System project work
ISO 9001 Quality Management System Certification work completed successfully
- 2005 Export development project started
- 2008 We made our first export sales
- 2010 Flywheel production started
- 2011 Railway parts production started on project basis. (Axle Box – Brake Shoe- Pivot Bearing)
- 2012 Opened branch in Istanbul
Certified 15085-2 CL1 Welding Systems Certificate and EN ISO 3834-2 for Railway
- 2013 Flywheel housing R&D completed and machine investment was made
Flywheel housing test production and the testing process of samples began
- 2014 Moved to new factory located in Konya 3.Organize Industrial Zone
New technology CMM device start-up
- 2015 ISO / TS 16949 Automotive Quality Management System, ISO 14001 Environmental Management System, and OHSAS 18001 Occupational Health and Safety project work started
- 2016 Certified ISO / TS 16949 Automotive Quality Management System, ISO 14001 Environmental Management System and OHSAS 18001 Occupational Health and Safety by Bureau Veritas
Improvement of the after-sales service network project started
- 2017 Konpar Production System for sales (Lean Manufacturing Basics), Corporate Human Resources Management, DRP Distribution Channels planning project started
- 2018 Today, we export to more than 32 countries with our quality and customer-oriented service concept



- 1995 Pazar Analizleri, Fabrika Yeri Seçimi, Tesis Tasarımı, Hatların Montajı,
 1996 Ar-Ge (Araştırma Geliştirme) Ür-Ge (Ürün Geliştirme) çalışmalarının tamamlanarak, ürün deneme üretimleri ve alınan sonuçların onayı ile, fren kampanası ve porya seri üretimine başlanması.
- 1999 Fren Diski seri üretimine başladık.
- 2004 ISO 9001 Kalite Yönetim Sistemi proje çalışmalarını başlattık.
 ISO 9001 Kalite Yönetim Sistemi çalışmalarımızı Belgelendirme çalışmalarımızı başarı ile tamamladık,
 İhracatı Geliştirme projemizin başlaması.
- 2005 İlk ihracatımızı gerçekleştirdik.
- 2008 Volan üretimine başladık.
- 2010 Proje bazlı olarak demiryolu parçaları üretimi başladı. (Dingil yatak kutusu – Yıldız – Sabo Çarığı – Pivot)
- 2011 İstanbul şubemiz açıldı.
- 2012 Demiryolu sektörü için 15085-2 CL1 Kaynak ve EN ISO 3834-2 sistem belgelendirme çalışmaları başarı ile tamamlandı.
 Volan muhafazası Ar-Ge (Araştırma Geliştirme) Ür-Ge (Ürün Geliştirme) çalışmaları tamamlanarak,makina yatırımı yapıldı.
- 2013 Volan muhafazası deneme üretimleri ve alınan numunelerin test edilme süreci başladı.
 Konya 3.Organize Sanayi Bölgesindeki üretim tesislerimize taşındık,
 Yeni teknoloji CMM cihazı devreye alındı
- 2014 ISO/TS 16949 Otomotiv için Kalite Yönetim Sistemi proje çalışmalarına,
 ISO 14001 Çevre Yönetim Sistemi ve OHSAS 18001 İş Sağlığı Güvenliği proje çalışmalarına başladık.
 ISO/TS 16949 Otomotiv için Kalite Yönetim Sistemi,
- 2015 ISO 14001 Çevre Yönetim Sistemi ve OHSAS 18001 İş Sağlığı Güvenliği Yönetim Sistemi Belgelendirme çalışmalarımızı başarı ile tamamladık,
 Satış Sonrası Hizmet Ağının Geliştirilmesi Projesini başlattık,
- 2016 Satış Konpar Üretim Sistemi, (Yalın Üretim Temelleri),
 Kurumsal İnsan Kaynakları Yönetimi,
- 2017 DRP Dağıtım Kanalları Planlaması Projelerimizi başlattık.
- 2018 Bugün kaliteli ve müşteri odaklı hizmet anlayışımız ile 32 ülkeye ihracat yapmaktayız.





BRAKE DISC // BRAKE DRUM // EL Y WHEEL // WHEEL HUB // BRAKE PARTS // EL Y WHEEL HOUSING

// BRAKE DISC // BRAKE DRUM // FL YWHEEL // WHEEL HUB // BRAKE PARTS // FL YWHEEL

Değerlerimiz

Otomotiv ve demiryolu parçaları üretiminde global bir firma olmak.

Mühendislik ve tasarım isteyen parçaların üretimini yapmak.

Üretimin her aşamasında müşteri memnuniyetine önem veren KONPAR, müşterilerinin istek ve düşüncelerini kendi bilgi ve deneyimiyle harmanlayıp, yine müşterilerinin istek ve ihtiyaçlarına göre istenilen ürünleri üretmektedir.

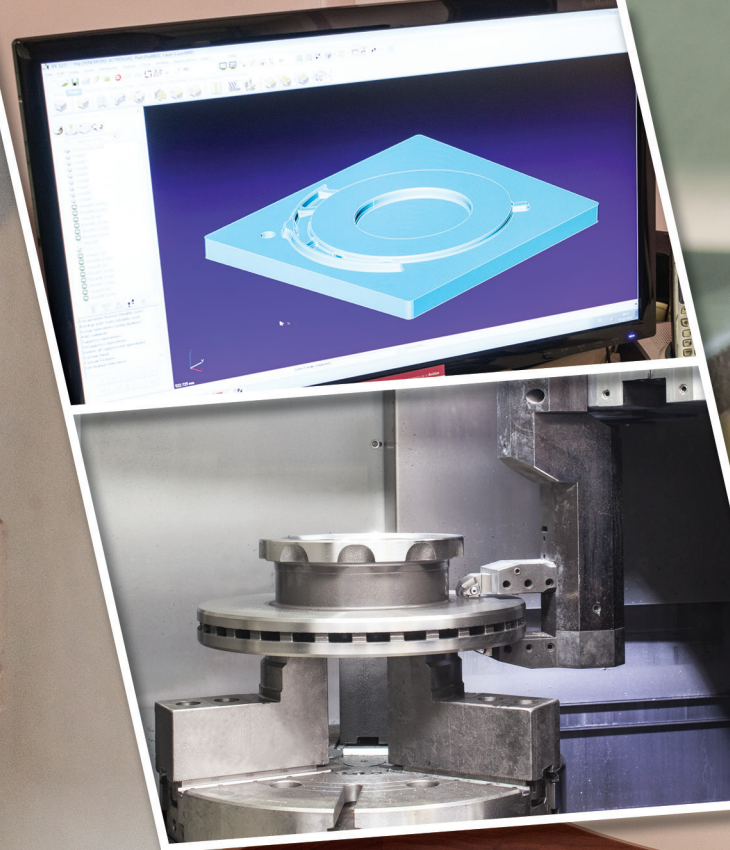
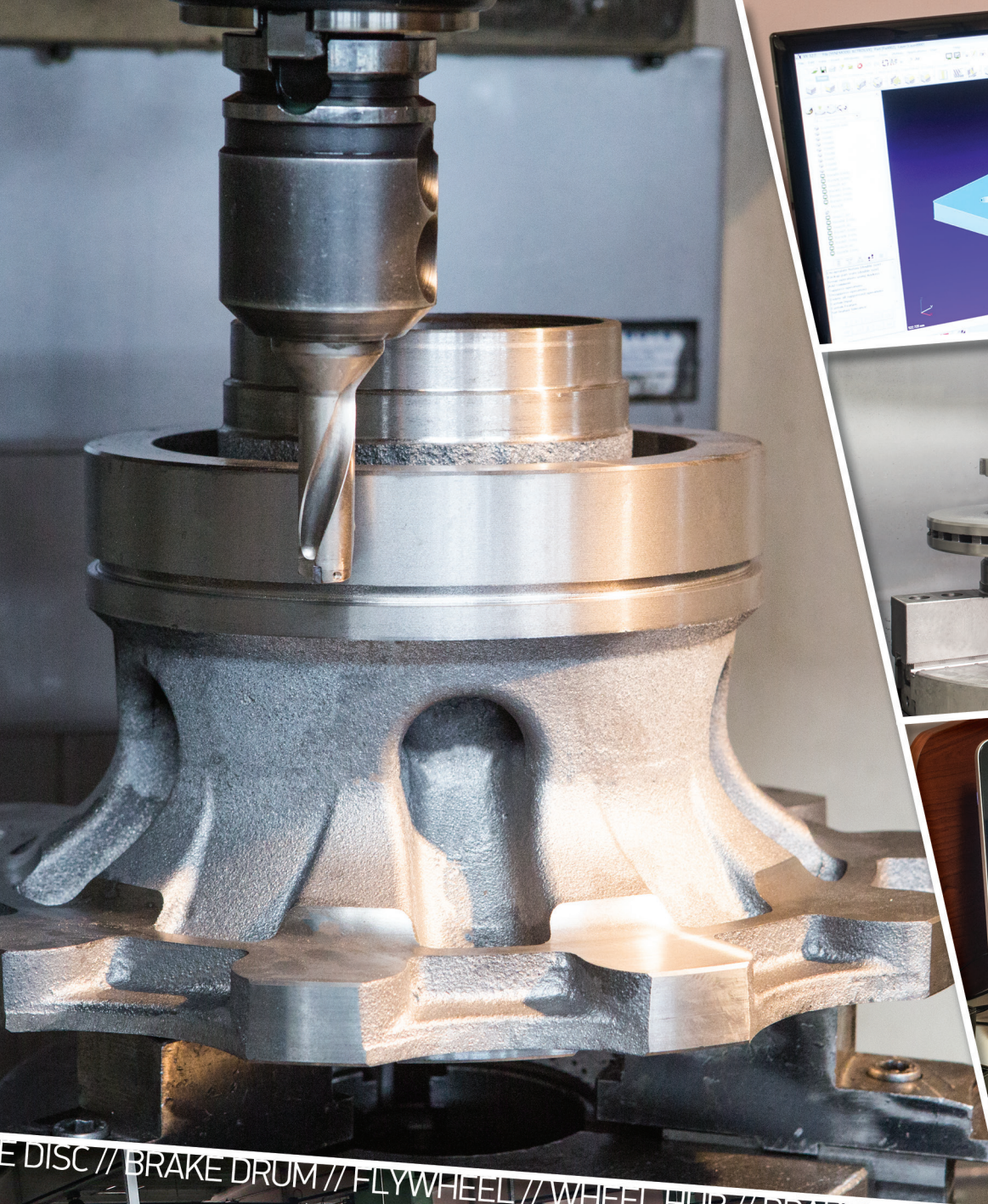
Our Values

To be a global company about manufacturing automotive and railway parts.

Manufacturing of parts need design and engineering.

Konpar gives importance to customer's satisfaction in every aspect of production process, offering products to meet customer's request and needs, combining it's knowledge and experience.





E DISC // BRAKE DRUM // FLYWHEEL // WHEEL HUB // BRAKE PARTS // FLYWHEEL HOUSING // BR



Providing
Fast and Innovative
products and services



Leading the change
for a sustainable success

WHEEL HUB // BRAKE DISC // BRAKE DRUM // FLYWHEEL // WHEEL HUB // BRAKE PARTS // FLYWHEEL HO



Product Index

Ürün Fihristi

Wheel Hubs

Poryalar

12-13-14	Mercedes
15	Man
16-17-18	Renault
19	Iveco
20-21	Isuzu
22-23	Trailer
23-24	Daf
25	Setra - Scania
26-27-28-29	Volvo
29	Neoplan - Ford - Hyundai

Flywheels

Volanlar

50-51-52	Mercedes
53-54-55	Man
56	Renault
57-58	Iveco
59	Isuzu - Mitsubishi - Daf
60	Scania - Volvo

Brake Discs

Fren Diskleri

32-33	Mercedes
34-35	Man
36-37	Renault
38-39-40-41	Iveco
41	Otokar
42	Isuzu - Mitsubishi
43-44	BPW - Fruehauf - Saf
45	Saf - Gigant - Valx - Ror
46	Daf - Setra - Scania
47	Volvo - Neoplan - Ikarus
48	BMC - Ford

Brake Drums

Kampanalar

62-63-64	Mercedes
65	MAN
66	Iveco - Mitsubishi
67-68	BPW - Saf - Fruehauf
69	Otoyol - Daf
70	Setra - Scania
71-72	Volvo
72	Neoplan
73-74	Fatih - BMC
75	Ford
76	Dodge - Sanos - Hova - Nissan

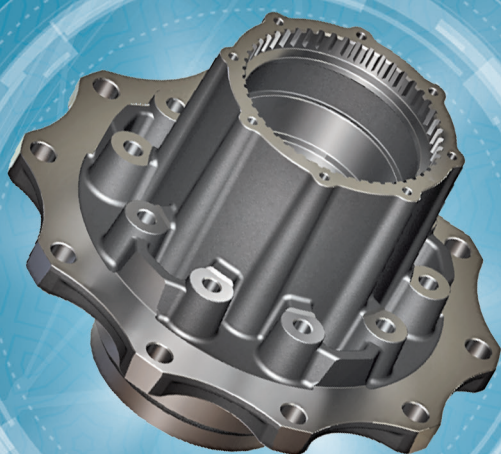
Small Brake Drums

Küçük Kampanalar

78	Fiat Iveco
79	Magirus - Otokar
80-81-82	Isuzu
82	Mitsubishi - BMC
83	Hyundai - NDR - Mazda
84	Hashimbus - Daihatsu - Toyota

WHEEL HUBS

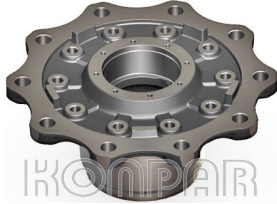
PORYA



MERCEDES

NP-20109

0403 - 0404 OTOBÜS DİSKLİ ÖN
WHEEL HUB / FRONT (FOR BRAKE DISC)



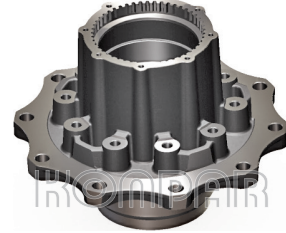
OEM

3563340201 - 3563340001

Pos	A	B	C	D	E
F	110	150	22	176	380

NP-20110

0403 - 0404 OTOBÜS DİSKLİ ÇEKİCİ
WHEEL HUB / REAR (FOR BRAKE DISC)



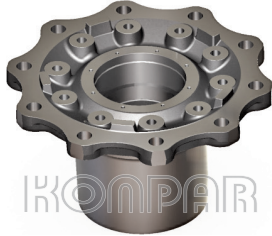
OEM

3563560001

Pos	A	B	C	D	E
R	140	150	22	276	380

NP-20111

1840 - 1848 - 2528 - 3228 - 3240 AXOR/ACTROS E.M. ÖN DİSKLİ PORYA
(2008 ÖNCESİ) WHEEL HUB OLD MODEL / FRONT (FOR BRAKE DISC)



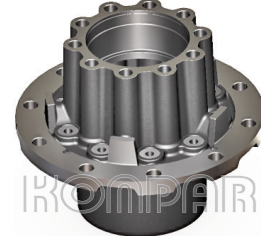
OEM

9423341201 - 9423370701 - 9423340201 - 9423341501

Pos	A	B	C	D	E
F	130	150	22	176	382

NP-20112

1840 - 1848 - 2523 - 2528 - 3228 - 3240 AXOR DİSKLİ
ÇEKİCİ PORYA WHEEL HUB / REAR (FOR BRAKE DISC)



OEM

9463560201 - 9463560901 - 9463561901

Pos	A	B	C	D	E
R	157	170	22	297,5	377

NP-20113

2528 - 3228 - 3240 AXOR DİNGİL PORYA
REAR AXLE WHEEL HUB



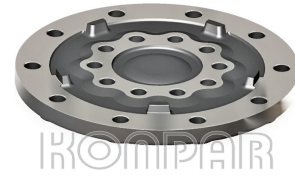
OEM

3560101101 - 9463560101 - 9463561301

Pos	A	B	C	D	E
AXLE	130	150	22	187	380

NP-20114

AXOR/ACTROS DİSKLİ ÖN FLANŞ (2008 SONRASI)
FLANGE (FOR BRAKE DISC)



OEM

9433340945 - 9433341045 - 0003300725

Pos	A	B	C	D	E
F			22	38	382

NP-20115

AXOR-ACTROS DİSKLİ ÖN PORYA GÖBEĞİ
(2008 SONRASI) HUB UNIT (FOR BRAKE DISC)



OEM

9433301125 - 9433340701

Pos	A	B	C	D	E
F	140	140		142,5	199

NPR-20115

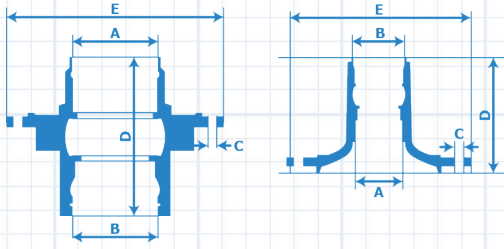
AXOR-ACTROS DİSKLİ ÖN PORYA GÖBEK RULMANI
(2008 SONRASI) WHEEL HUB BEARING



OEM

BTH 0022

Pos	A	B	C	D	E



A : Diameter of Outer Bearing Seat
Dış Rulman Yatağı Çapı
B : Diameter of Inner Bearing Seat
İç Rulman Yatağı Çapı
C : Diameter of Bolt Holes
Bijon Delik Çapı
D : Total Height
Kömpe Boy
E : Outer Diameter of the Hub
Dış Çap

F : FRONT
R : REAR
T : TRAILER

MERCEDES

WHEEL HUBS / PORYA

NPK-20115

AXOR-ACTROS DİSKLİ ÖN PORYA GÖBEĞİ KİT
(2008 SONRASI) WHEEL HUB KIT



NEW

OEM

Pos	A	B	C	D	E
-----	---	---	---	---	---

NP-20116

AXOR 4140 DİSKLİ ÖN PORYA GÖBEĞİ
HUB UNIT (FOR BRAKE DISC)



NEW

OEM

9433300825

Pos	A	B	C	D	E
F	140	140		157,5	199

NPR-20116

AXOR 4140 DİSKLİ ÖN PORYA GÖBEK RULMANI
WHEEL HUB BEARING



NEW

OEM

BTH 0022

Pos	A	B	C	D	E
-----	---	---	---	---	---

NPK-20116

AXOR 4140 DİSKLİ ÖN PORYA GÖBEĞİ KİT
WHEEL HUB KIT



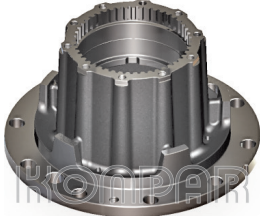
NEW

OEM

Pos	A	B	C	D	E
-----	---	---	---	---	---

NP-20120

345 T - EURO 3 - OTOBÜS ÇEKİCİ PORYA
WHEEL HUB / REAR



NEW

OEM

4472435160 - 0003560401

Pos	A	B	C	D	E
R	160	165	22,35	243	369

NP-20127

TRAVEGO DİSKLİ ÖN PORYA (2008 ÖNCESİ)
WHEEL HUB / FRONT (FOR BRAKE DISC)



NEW

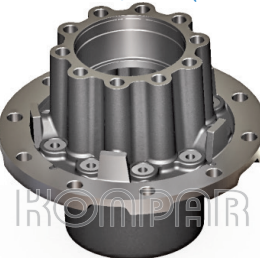
OEM

9423341201 - 9423370701 - 9423340201 - 9423341501

Pos	A	B	C	D	E
F	130	150	22	176	382

NP-20128

TRAVEGO DİSKLİ ÇEKİCİ PORYA (2008 ÖNCESİ)
WHEEL HUB / REAR (FOR BRAKE DISC)



NEW

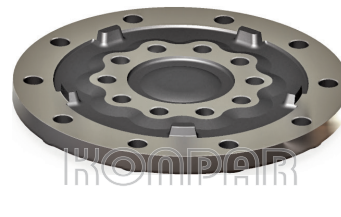
OEM

9463560201 - 9463560901 - 9463561901

Pos	A	B	C	D	E
R	157	70	22	297,5	377

NP-20129

TRAVEGO DİSKLİ ÖN FLANŞ
FLANGE (FOR BRAKE DISC)



NEW

OEM

9433340945 - 9433341045 - 0003300725

Pos	A	B	C	D	E
F			22	48	380

MERCEDES

NP-20130

TRAVEGO DİSKLİ ÖN PORYA GÖBEĞİ
(2008 SONRASI) HUB UNIT (FOR BRAKE DISC)



OEM

9433301125 - 9433340701

Pos	A	B	C	D	E
	140	140		142,5	199

NPR-20130

TRAVEGO DİSKLİ ÖN PORYA GÖBEK RULMANI
(2008 SONRASI) WHEEL HUB BEARING



OEM

BTH 0022

Pos	A	B	C	D	E

NPK-20130

TRAVEGO DİSKLİ ÖN PORYA GÖBEĞİ KİT
(2008 SONRASI) WHEEL HUB KIT



OEM

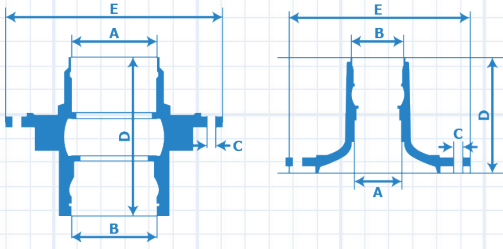
Pos	A	B	C	D	E



?

Aradığınız ürünü
bulamadınız mı?

İnternet Sayfamızı
Ziyaret Edebilirsiniz



A : Diameter of Outer Bearing Seat
 Dış Rulman Yatağı Çapı
 B : Diameter of Inner Bearing Seat
 İç Rulman Yatağı Çapı
 C : Diameter of Bolt Holes
 Bijon Delik Çapı
 D : Total Height
 Komple Boy
 E : Outer Diameter of the Hub
 Dış Çap

F : FRONT
 R : REAR
 T : TRAILER

MAN

NPK-20209

MAN TGA ÖN RULMAN ÜNİTESİ
 WHEEL HUB / FRONT (FOR BRAKE DISC)



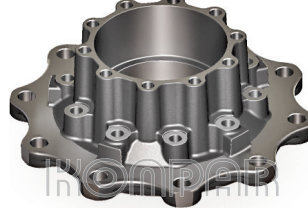
OEM

81934200349 - 81934200288 - 81934200330

Pos	A	B	C	D	E
F					

NP-20210

TGA - TGS - TGX - MEGA FORTUNA DİSKLİ ÇEKİCİ
 PORYA WHEEL HUB / REAR (FOR BRAKE DISC)



OEM

81357010155 - 81357013155

Pos	A	B	C	D	E
R	160	160	22	163	380

NPR-20210

TGA - TGS - TGX - MEGA FORTUNA DİSKLİ
 ÇEKİCİ PORYA RULMANI WHEEL HUB BEARING



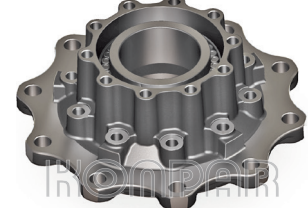
OEM

803750 B - 81934200342

Pos	A	B	C	D	E

NPK-20210

TGA - TGS - TGX - MEGA FORTUNA DİSKLİ
 ÇEKİCİ PORYA KİT WHEEL HUB KIT



OEM

Pos	A	B	C	D	E

NP-20250

TGA - TGX DİSKLİ ÖN FLANŞ
 FLANGE



NEW PRODUCT



OEM

81443010177

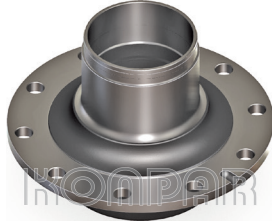
Pos	A	B	C	D	E
F			22	55	380



RENAULT

NP-20416

RENAULT 270 ÇEKİCİ PORYA
WHEEL HUB / REAR



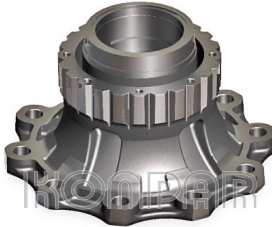
OEM

5010439809

Pos	A	B	C	D	E
R	140	145	25	251	380

NP-20431

RENAULT PREMIUM DİSKLİ ÖN PORYA
WHEEL HUB / FRONT (FOR BRAKE DISC)



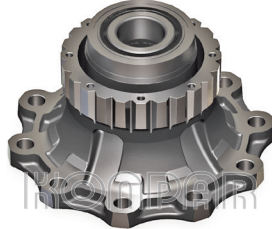
OEM

7420535202 - 1026659 - 74851144470

Pos	A	B	C	D	E
F	125	125	25	165,5	383

NPK-20431

RENAULT PREMIUM DİSKLİ ÖN PORYA KİT
WHEEL HUB KIT



OEM

Pos	A	B	C	D	E

NPK-20435

RENAULT MAGNUM PREMIUM RULMAN ÜNİTESİ
WHEEL HUB / FRONT



OEM

5010439770 - 504189654

Pos	A	B	C	D	E

NPK-20430

RENAULT 220 MIDLUM RULMAN ÜNİTESİ
WHEEL HUB / FRONT (FOR BRAKE DISC)



NEW PRODUCT



OEM

5010587029

Pos	A	B	C	D	E

NPR-20431

RENAULT PREMIUM DİSKLİ ÖN PORYA RULMANI
WHEEL HUB BEARING



OEM

566426 H 195

Pos	A	B	C	D	E

NP-20433

RENAULT KERAX E.M. KAMPANALI ÇEKİCİ
PORYA WHEEL HUB / REAR (FOR BRAKE DRUM)



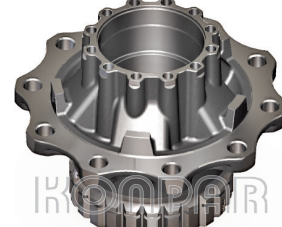
OEM

5010566112 - 5010219270

Pos	A	B	C	D	E
R	150	160	25	235	376,5

NP-20436

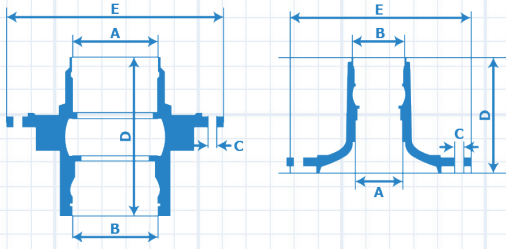
RENAULT MAGNUM PREMIUM DİSKLİ ÇEKİCİ
PORYA WHEEL HUB / REAR (FOR BRAKE DISC)



OEM

7420535263 - 7420819834 - 7485107753

Pos	A	B	C	D	E
R	148	148	25	270	383



A : Diameter of Outer Bearing Seat
Dış Rulman Yatağı Çapı
B : Diameter of Inner Bearing Seat
İç Rulman Yatağı Çapı
C : Diameter of Bolt Holes
Bijon Delik Çapı
D : Total Height
Kömpe Boy
E : Outer Diameter of the Hub
Dış Çap

F : FRONT
R : REAR
T : TRAILER

RENAULT

WHEEL HUBS / PORYA

NPR-20436

RENAULT MAGNUM PREMIUM DİSKLİ ÇEKİCİ
PORYA RULMANI WHEEL HUB BEARING



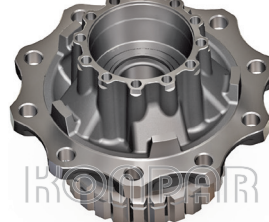
OEM

566425 H 195

Pos	A	B	C	D	E
-----	---	---	---	---	---

NPK-20436

RENAULT MAGNUM PREMIUM DİSKLİ ÇEKİCİ
PORYA KİT WHEEL HUB KIT

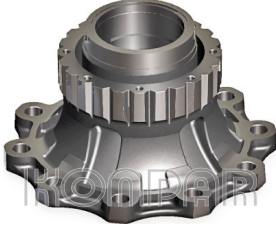


OEM

Pos	A	B	C	D	E
-----	---	---	---	---	---

NP-20437

RENAULT PREMIUM DİSKLİ ÖN PORYA
WHEEL HUB / FRONT (FOR BRAKE DISC)



OEM

7421022433

Pos	A	B	C	D	E
F	110	110	25	162,5	384

NPR-20437

RENAULT PREMIUM DİSKLİ ÖN PORYA RULMANI
WHEEL HUB BEARING



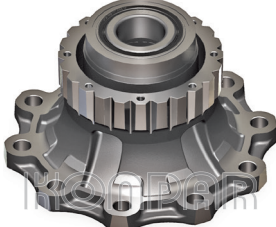
OEM

566427 H 195

Pos	A	B	C	D	E
-----	---	---	---	---	---

NPK-20437

RENAULT PREMIUM DİSKLİ ÖN PORYA KİT
WHEEL HUB KIT

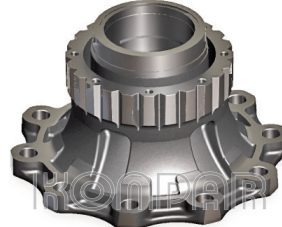


OEM

Pos	A	B	C	D	E
-----	---	---	---	---	---

NP-20439

RENAULT PREMIUM DİSKLİ ÖN PORYA
WHEEL HUB / FRONT (FOR BRAKE DISC)



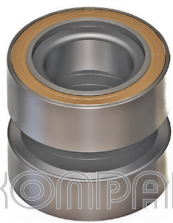
OEM

7421021381 - 7410241087

Pos	A	B	C	D	E
F	110	110	27,15	160	383,5

NPR-20439

RENAULT PREMIUM DİSKLİ ÖN PORYA RULMANI
WHEEL HUB BEARING



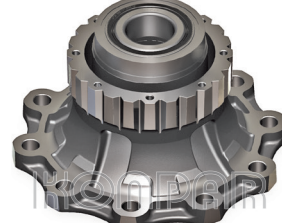
OEM

566427 H 195

Pos	A	B	C	D	E
-----	---	---	---	---	---

NPK-20439

RENAULT PREMIUM DİSKLİ ÖN PORYA KİT
WHEEL HUB KIT



OEM

Pos	A	B	C	D	E
-----	---	---	---	---	---

RENAULT

NPK-20440

RENAULT ÖN RULMAN ÜNİTESİ
WHEEL HUB KIT



NEW PRODUCT

OEM

5010216920 - 7420879770 - 201044VKVA5308

Pos	A	B	C	D	E
F					



NPK-20441

RENAULT ÖN RULMAN ÜNİTESİ
WHEEL HUB FRONT KIT



NEW PRODUCT

OEM

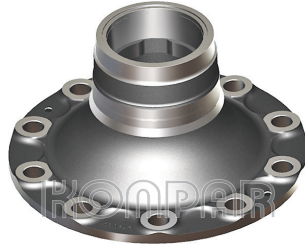
5010566154 - 5010308616 - VKVA5407

Pos	A	B	C	D	E
F					



NP-20442

RENAULT PREMIUM KERAX KAMPANALI ÖN
PORYA WHEEL HUB / FRONT (FOR BRAKE DRUM)



OEM

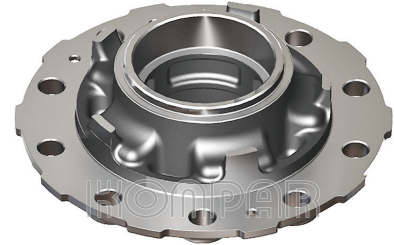
7421024160 - 1026665

Pos	A	B	C	D	E
F	125	125	25	164,5	384



NP-20443

RENAULT CERLİ KAMPANALI ÇEKİCİ PORYA
WHEEL HUB / REAR (FOR BRAKE DRUM)



OEM

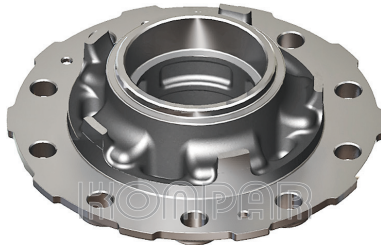
7421328181 - 7420820402

Pos	A	B	C	D	E
R	148	148	25,25	157	385,5



NP-20445

RENAULT KERAX E.M. CERLİ KAMPANALI ÇEKİCİ
PORYA WHEEL HUB / REAR (FOR BRAKE DRUM)



OEM

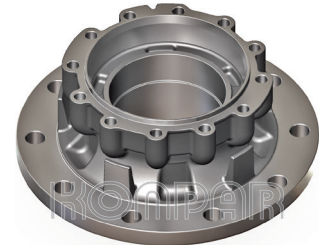
7420517167 - 1026661

Pos	A	B	C	D	E
R	148	148	27,15	157	385,5



NP-20447

RENAULT KERAX KAMPANALI ÇEKİCİ PORYA
WHEEL HUB / REAR (FOR BRAKE DRUM)

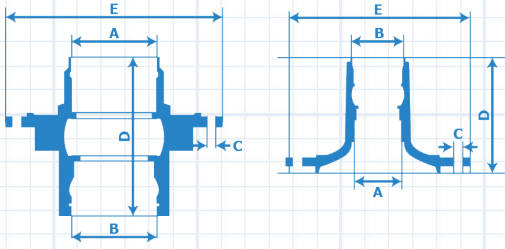


OEM

7420819822 - 7420820420 - 1026757

Pos	A	B	C	D	E
R	148	148	25	197,5	383,5





A : Diameter of Outer Bearing Seat
Dış Rulman Yatağı Çapı
B : Diameter of Inner Bearing Seat
İç Rulman Yatağı Çapı
C : Diameter of Bolt Holes
Bijon Delik Çapı
D : Total Height
Kömpe Boy
E : Outer Diameter of the Hub
Dış Çap

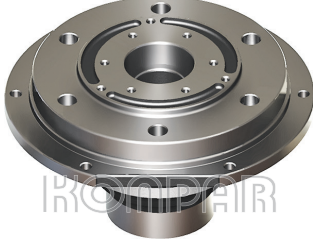
F : FRONT
R : REAR
T : TRAILER

IVECO

WHEEL HUBS / PORYA

NP-20501

IVECO 50 NC Y.M. ÖN PORYA
WHEEL HUB / FRONT (NEW MODEL)



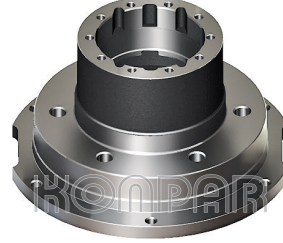
OEM

4685285 - 7168364

Pos	A	B	C	D	E
F					

NP-20502

IVECO 50 NC Y.M. / 8512 IVECO KAMPANALI
ARKA PORYA WHEEL HUB / REAR



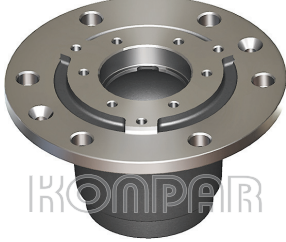
OEM

4686447 - 7168365

Pos	A	B	C	D	E
R					

NP-20503

IVECO 85-12 DİSK ÖN PORYA
WHEEL HUB / FRONT (FOR BRAKE DISC)



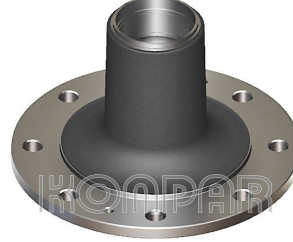
OEM

7166920

Pos	A	B	C	D	E
F					

NP-20504

IVECO EUROBUS ÖN DİSK PORYA
WHEEL HUB / FRONT (FOR BRAKE DISC)



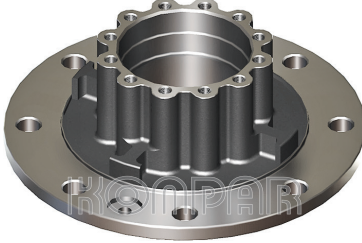
OEM

7173750

Pos	A	B	C	D	E
F					

NP-20505

IVECO EUROBUS ARKA PORYA
WHEEL HUB / REAR



OEM

7173696

Pos	A	B	C	D	E
R					

NPK-20580

IVECO DAILY ÖN PORYA KİT
WHEEL HUB KIT (FOR BRAKE DISC)



NEW PRODUCT

OEM

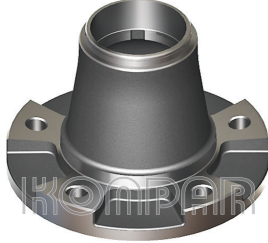
93810034 - 93824579 - 93824580

Pos	A	B	C	D	E
F					

ISUZU

NP-20809

ISUZU NPR ÖN PORYA
WHEEL HUB / FRONT



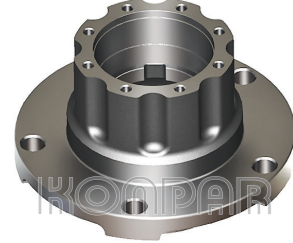
OEM

8942463081

Pos A B C D E
F

NP-20810

ISUZU NPR ARKA PORYA
WHEEL HUB / REAR



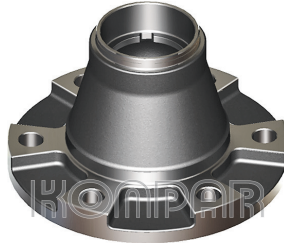
OEM

3899906090

Pos A B C D E
R

NP-20811

ISUZU ŞAMPİYON ÖN PORYA
CHAMPION WHEEL HUB / FRONT



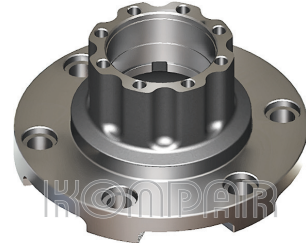
OEM

3777727543

Pos A B C D E
F

NP-20812

ISUZU ŞAMPİYON ARKA PORYA
CHAMPION WHEEL HUB / REAR



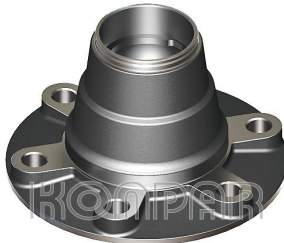
OEM

3777700050

Pos A B C D E
R

NP-20813

ISUZU NQR ÖN PORYA
WHEEL HUB / FRONT



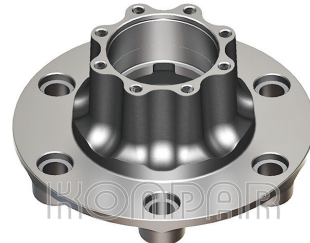
OEM

8971312360

Pos A B C D E
F

NP-20814

ISUZU NQR - NPR 75 - TURKUAZ ABS ARKA
PORYA WHEEL HUB / REAR (ABS)



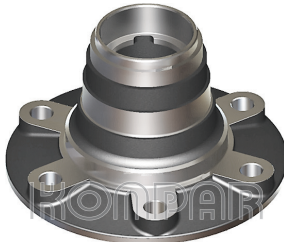
OEM

3777731710 - 3777707960 - 897250321101

Pos A B C D E
R

NP-20818

ISUZU NQR ABS ÖN PORYA
WHEEL HUB / FRONT (ABS)



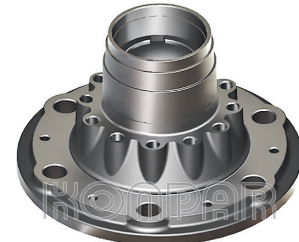
OEM

377773213101

Pos A B C D E
F

NP-20819

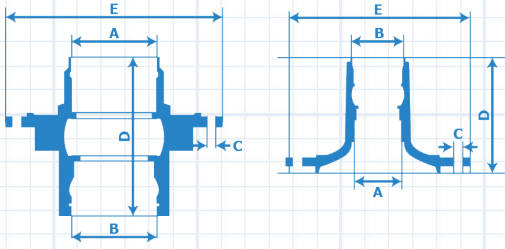
ISUZU NNR ÖN PORYA
WHEEL HUB / FRONT



OEM

894365459001

Pos A B C D E
F



A : Diameter of Outer Bearing Seat
Dış Rulman Yatağı Çapı
B : Diameter of Inner Bearing Seat
İç Rulman Yatağı Çapı
C : Diameter of Bolt Holes
Bijon Delik Çapı
D : Total Height
Komple Boy
E : Outer Diameter of the Hub
Dış Çap

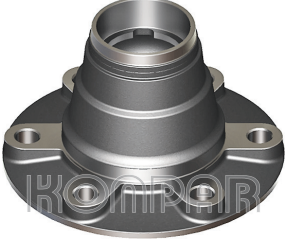
F : FRONT
R : REAR
T : TRAILER

ISUZU

WHEEL HUBS / PORYA

NP-20821

ISUZU NPR 75 ABS ARKA PORYA
WHEEL HUB / REAR



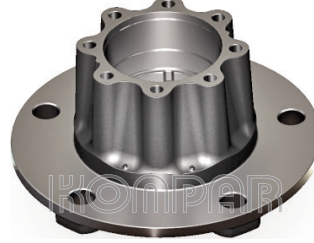
OEM

8973499110

Pos	A	B	C	D	E
R					

NP-20824

ISUZU NPR 66 OTOBÜS DAR BİLYA ARKA PORYA
WHEEL HUB - SMALL BEARING

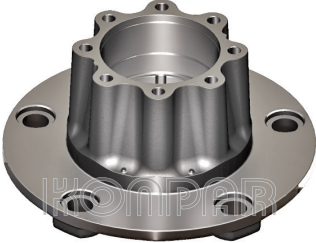


OEM

Pos	A	B	C	D	E
R					

NP-20825

ISUZU NPR 66 OTOBÜS GENİŞ BİLYA ARKA
PORYA WHEEL HUB - BIG BEARING

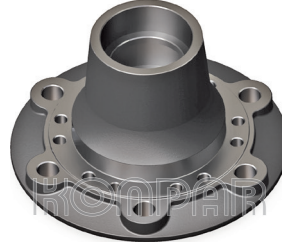


OEM

Pos	A	B	C	D	E
R					

NP-20826

ISUZU NOVA ÖN PORYA
WHEEL HUB / FRONT



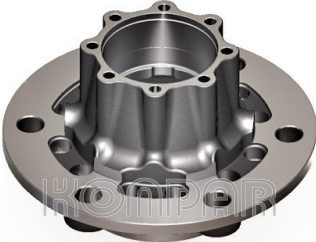
OEM

387017498001

Pos	A	B	C	D	E
F					

NP-20827

ISUZU NOVA ARKA PORYA
WHEEL HUB / REAR



OEM

387017947001

Pos	A	B	C	D	E
R					

Sınırları aşan
üretim gücü...

TRAILER

NP-21023

SAF DİNGİL JANT TAŞIYICI FLANŞ
FLANGE



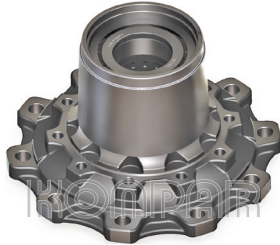
OEM

1146200100 - 1146200401 - 1146200402

Pos	A	B	C	D	E
T			22	58	380

NP-21060

KOGEL KISA TİP PORYA DİSKLİ
WHEEL HUB REAR AXLE - SHORT TYPE



OEM

0003500535 - 9463560401 - 9463560501 - 9463562601

Pos	A	B	C	D	E
T	140	140	22	169,5	380

NP-21062

FRUEHAUF ÇİFTTEKER PORYA E.M.
WHEEL HUB FOR TWIN WHEEL (OLD MODEL)



OEM

AJB 0038001 - CF 1014228

Pos	A	B	C	D	E
T	152,4	152,4	25,5	230,5	375

NPK-21066

SAF DİNGİL RULMAN ÜNİTESİ
WHEEL HUB KIT



NEW PRODUCT

OEM

34343655000 - 4200200100 - 3200200151

Pos	A	B	C	D	E
T					

NP-21038

12 TON ÇİFT TEKER PORYA



NEW PRODUCT

OEM

0327243200

Pos	A	B	C	D	E
T	150	120	22	206	380

NP-21061

KOGEL UZUN TİP PORYA DİSKLİ
WHEEL HUB REAR AXLE - LONG TYPE



OEM

9423300425 - 9423300301 - 9423341401

Pos	A	B	C	D	E
T	120	150	22	203	382,2

NP-21063

PİLOT PORYA Y.M. 12 TON DİSKLİ
WHEEL HUB 12 TONNES (FOR BRAKE DISC)



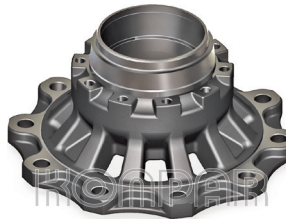
OEM

0127243280 - 0980107320 - 0327243280

Pos	A	B	C	D	E
T	120	150	22	193,5	380

NP-21067

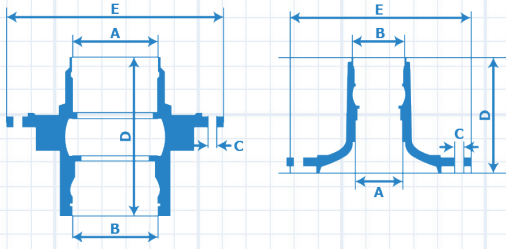
SAF E.M. PİLOT PORYA DİSKLİ (82'LİK)
WHEEL HUB (OLD MODEL FOR BRAKE DISC)



OEM

3307303000 - 3307303001

Pos	A	B	C	D	E
T	138	138	22	144	385,5



A : Diameter of Outer Bearing Seat
 Dış Rulman Yatağı Çapı
 B : Diameter of Inner Bearing Seat
 İç Rulman Yatağı Çapı
 C : Diameter of Bolt Holes
 Bijon Delik Çapı
 D : Total Height
 Komple Boy
 E : Outer Diameter of the Hub
 Dış Çap

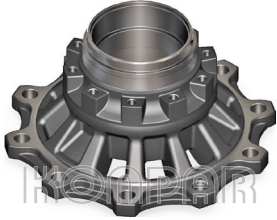
F : FRONT
 R : REAR
 T : TRAILER

SAF - TRAILER - DAF

WHEEL HUBS / PORYA

NP-21068

SAF Y.M. PİLOT PORYA DİSKLİ (88'LİK) WHEEL HUB (NEW MODEL FOR BRAKE DISC)



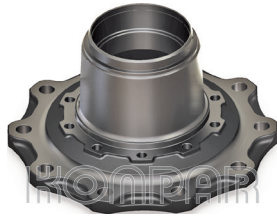
NEW

OEM
 3307304500

Pos	A	B	C	D	E
T	138	138	22	156	380

NP-21069

SAF PİLOT DİSKLİ PORYA WHEEL HUB (FOR BRAKE DISC)



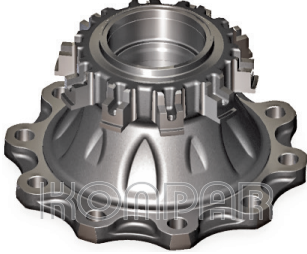
NEW

OEM
 3307305600

Pos	A	B	C	D	E
T	138	138	22	170	380

NP-21110

DAF XF-CF ÖN DİSKLİ PORYA (2006 ÖNCESİ) WHEEL HUB / FRONT (FOR BRAKE DISC)



NEW

OEM
 1391615 - 1697346 - 1388905

Pos	A	B	C	D	E
F	119,7	124,7	25	134	386

NPR-21110

DAF XF-CF ÖN PORYA RULMANI (2006 ÖNCESİ) WHEEL BEARING



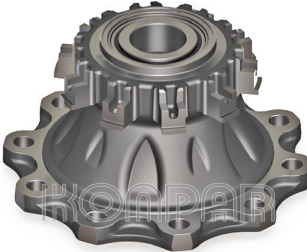
NEW

OEM
 566834 H 195

Pos	A	B	C	D	E

NPK-21110

DAF XF-CF ÖN DİSKLİ PORYA KİT (2006 ÖNCESİ) WHEEL HUB KIT



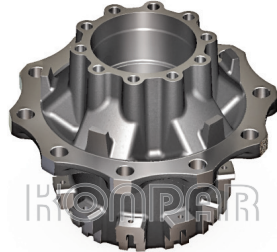
NEW

OEM

Pos	A	B	C	D	E

NP-21111

DAF XF-CF DİSKLİ ÇEKİCİ PORYA (2006 ÖNCESİ) WHEEL HUB / REAR (FOR BRAKE DISC)



NEW

OEM
 1391617 - 1818003 - 1389061 - 1388906

Pos	A	B	C	D	E
R	148	148	25	287	381

NPR-21111

DAF XF-CF ÇEKİCİ PORYA RULMANI (2006 ÖNCESİ) WHEEL HUB BEARING



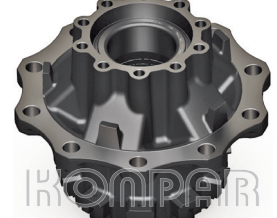
NEW

OEM
 805052 C

Pos	A	B	C	D	E

NPK-21111

DAF XF-CF DİSKLİ ÇEKİCİ PORYA KİT (2006 ÖNCESİ) WHEEL HUB KIT



NEW

OEM

Pos	A	B	C	D	E

DAF

NP-21114

DAF XF-CF ÖN DİSKLİ PORYA (2006 VE SONRASI) WHEEL HUB (FOR BRAKE DISC)



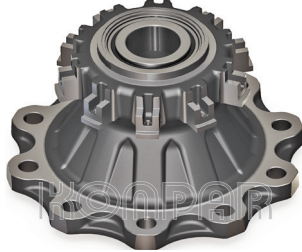
OEM

1691621 - 1699327 - 1818004

Pos	A	B	C	D	E
F	125	125	25	139,5	387

NPK-21114

DAF XF-CF ÖN DİSKLİ PORYA KİT (2006 VE SONRASI) WHEEL HUB KIT



OEM

Pos	A	B	C	D	E
F	125	125	25	139,5	387

NPR-21114

DAF XF-CF ÖN PORYA RULMANI (2006 VE SONRASI) WHEEL HUB BEARING



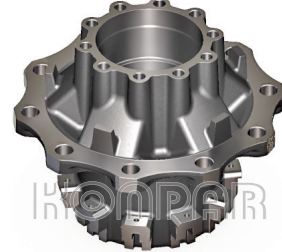
OEM

566074

Pos	A	B	C	D	E

NP-21115

DAF XF-CF ÇEKİCİ DİSKLİ PORYA (2006 VE SONRASI) WHEEL HUB / REAR (FOR BRAKE DISC)



OEM

1657637 - 1812161

Pos	A	B	C	D	E
R	148	148	25	295	381

NPR-21115

DAF XF-CF ÇEKİCİ PORYA RULMANI (2006 VE SONRASI) WHEEL HUB BEARING



OEM

566283 H 195

Pos	A	B	C	D	E

NPK-21115

DAF XF-CF ÇEKİCİ DİSKLİ PORYA KİT (2006 VE SONRASI) WHEEL HUB KIT

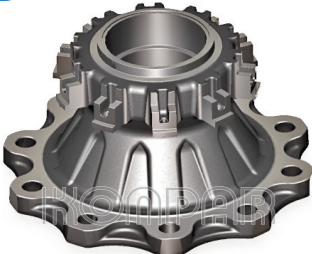


OEM

Pos	A	B	C	D	E

NP-21118

DAF XF-CF DİSKLİ ÖN PORYA (2010 VE SONRASI) WHEEL HUB / FRONT (FOR BRAKE DISC)



OEM

1812160 - 1613331 - 1428396

Pos	A	B	C	D	E
F	138	138	25	154	387

NPR-21118

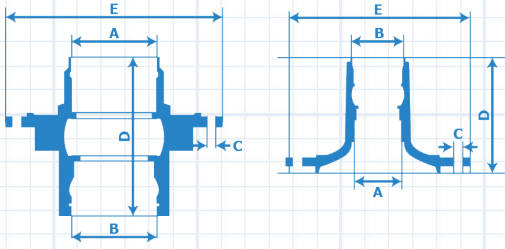
DAF XF-CF ÖN PORYA RULMANI (2010 VE SONRASI) WHEEL HUB BEARING



OEM

566193 H 195

Pos	A	B	C	D	E



A : Diameter of Outer Bearing Seat
Dış Rulman Yatağı Çapı
B : Diameter of Inner Bearing Seat
İç Rulman Yatağı Çapı
C : Diameter of Bolt Holes
Bijon Delik Çapı
D : Total Height
Komple Boy
E : Outer Diameter of the Hub
Dış Çap

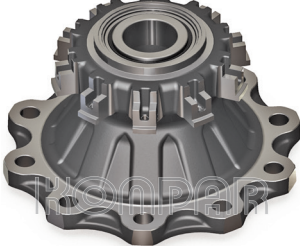
F : FRONT
R : REAR
T : TRAILER

DAF - SETRA - SCANIA

WHEEL HUBS / PORYA

NPK-21118

DAF XF-CF DİSKLİ ÖN PORYA KİT
(2010 VE SONRASI) WHEEL HUB KIT



NEW

OEM

Pos	A	B	C	D	E
F	130	150	22	176	383

NP-21250

SETRA 417 DİSKLİ ÖN PORYA
WHEEL HUB / FRONT (FOR BRAKE DISC)



NEW

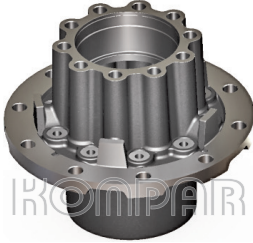
OEM

9423341201 - 9423370701 - 9423340201 - 9423341501

Pos	A	B	C	D	E
F	130	150	22	176	383

NP-21251

SETRA 417 DİSKLİ ÇEKİCİ PORYA
WHEEL HUB / REAR (FOR BRAKE DISC)



NEW

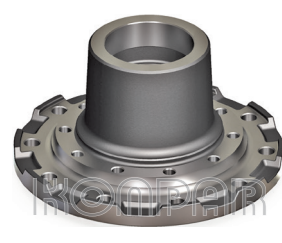
OEM

9463561901 - 9463560201 - 9463560901

Pos	A	B	C	D	E
R	157	170	22	297,5	377

NP-21375

SCANIA DİSKLİ ÖN PORYA (R-G SERİSİ)
WHEEL HUB / FRONT (FOR BRAKE DISC)



NEW

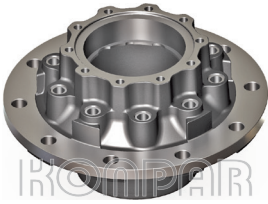
OEM

1868663 - 1480933 - 1724406 - 1864430

Pos	A	B	C	D	E
F	127,27	127	22,25	194	

NP-21376

SCANIA ŞANTİYE TİPİ DİSKLİ ÇEKİCİ PORYA
(R-G SERİSİ) WHEEL HUB / REAR



NEW

OEM

1382884

Pos	A	B	C	D	E
R	147	147	22,3	210,5	380

NP-21378

SCANIA DİSKLİ ÇEKİCİ PORYA (R-G SERİSİ)
WHEEL HUB / REAR



NEW

OEM

1724790 - 1800283

Pos	A	B	C	D	E
R	147	147	22,3	213,5	380

We're at your
services by
providing
a wide range
of products

VOLVO

NPK-21410 VOLVO FL SERİSİ RULMANLI ÖN PORYA KİT HUB UNIT (FOR BRAKE DISC)



NEW PRODUCT

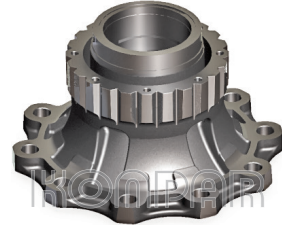
OEM

20550678 - 85124433

Pos	A	B	C	D	E
F					



NP-21411 VOLVO FH-12 E.M. FREZELİ DİSKLİ ÖN PORYA (125 BİLYA 25 DELİK) WHEEL HUB / FRONT (FOR BRAKE DISC)



OEM

3988930 - 3989341 - 85107750 - 8511448 - 8514470 - 85111791 - 1026798

Pos	A	B	C	D	E
F	125	125	25	165,5	383



NPR-21411 VOLVO FH-12 E.M. FREZELİ DİSKLİ ÖN PORYA RULMANI WHEEL HUB BEARING



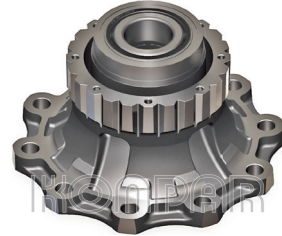
OEM

566426 H 195

Pos	A	B	C	D	E



NPK-21411 VOLVO FH-12 E.M. FREZELİ DİSKLİ ÖN PORYA KİT WHEEL HUB KIT

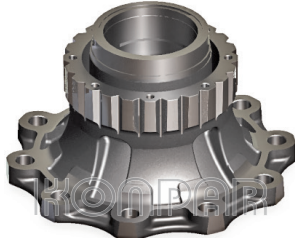


OEM

Pos	A	B	C	D	E



NP-21412 VOLVO FH FREZELİ DİSKLİ ÖN PORYA WHEEL HUB / FRONT (FOR BRAKE DISC)



OEM

85111794 - 85105693 - 3988831 - 85101818 - 3092719 - 85114471

Pos	A	B	C	D	E
F	125	125	27,15	165,5	383



NPR-21412 VOLVO FH FREZELİ DİSKLİ ÖN PORYA RULMANI WHEEL HUB BEARING



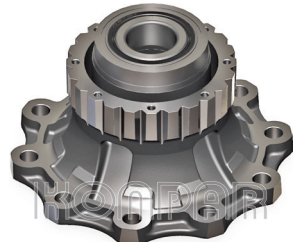
OEM

566426 H 195

Pos	A	B	C	D	E



NPK-21412 VOLVO FH FREZELİ DİSKLİ ÖN PORYA KİT WHEEL HUB KIT

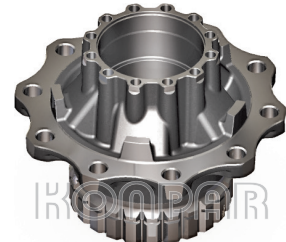


OEM

Pos	A	B	C	D	E



NP-21416 VOLVO FH -FM FREZELİ AKSLI DİSKLİ ÇEKİCİ PORYA WHEEL HUB AXLE (FOR BRAKE DISC)

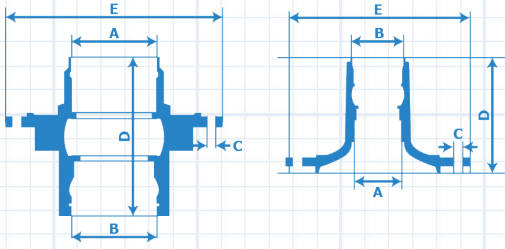


OEM

20535263 - 85107753 - 20567394

Pos	A	B	C	D	E
R	148	148	25,0	270	383,4





A : Diameter of Outer Bearing Seat
Dış Rulman Yatağı Çapı
B : Diameter of Inner Bearing Seat
İç Rulman Yatağı Çapı
C : Diameter of Bolt Holes
Bijon Delik Çapı
D : Total Height
Komple Boy
E : Outer Diameter of the Hub
Dış Çap

F : FRONT
R : REAR
T : TRAILER

VOLVO

WHEEL HUBS / PORYA

NPR-21416

VOLVO FH - FM FREZELİ AKSLİ DİSKLİ ÇEKİCİ
PORYA RULMANI WHEEL HUB BEARING



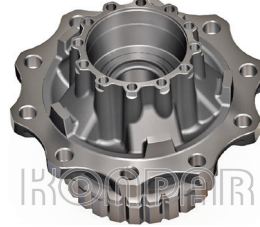
OEM

566425 H 195

Pos	A	B	C	D	E

NPK-21416

VOLVO FH - FM FREZELİ AKSLİ DİSKLİ ÇEKİCİ
PORYA KİT WHEEL HUB KIT

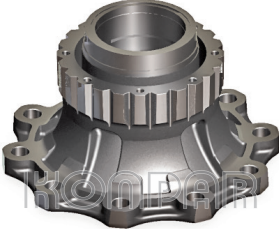


OEM

Pos	A	B	C	D	E

NP-21417

VOLVO FM - FH DİSKLİ FREZELİ ÖN PORYA
WHEEL HUB (FOR BRAKE DISC)



OEM

21022433 - 85111789 - 85107749

Pos	A	B	C	D	E
F	110	110	25	160	383,5

NPR-21417

VOLVO FM - FH DİSKLİ FREZELİ ÖN PORYA
RULMANI WHEEL HUB BEARING



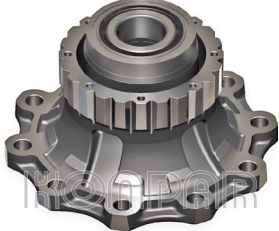
OEM

566427 H 195

Pos	A	B	C	D	E

NPK-21417

VOLVO FM - FH DİSKLİ FREZELİ ÖN PORYA KİT
WHEEL HUB KIT

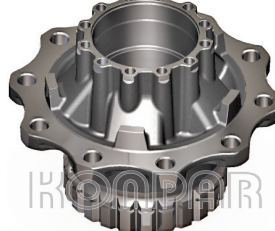


OEM

Pos	A	B	C	D	E

NP-21418

VOLVO FH - FM FREZELİ AKSLİ DİSKLİ ÇEKİCİ
PORYA WHEEL HUB / REAR (FOR BRAKE DISC)



OEM

3988833 - 85105696 - 20516966 - 20476383 - 85104298 - 3988834

Pos	A	B	C	D	E
R	148	148	27,15	270	383,4

NPR-21418

VOLVO FH - FM FREZELİ AKSLİ DİSKLİ ÇEKİCİ
PORYA RULMANI WHEEL HUB BEARING



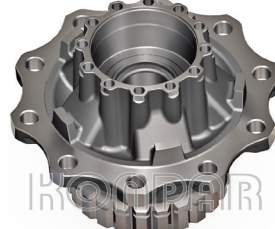
OEM

566425 H 195

Pos	A	B	C	D	E

NPK-21418

VOLVO FH - FM FREZELİ AKSLİ DİSKLİ ÇEKİCİ
PORYA KİT WHEEL HUB KIT



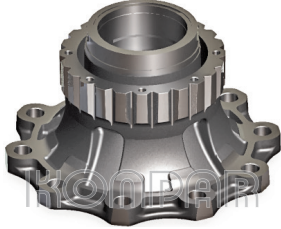
OEM

Pos	A	B	C	D	E

VOLVO

NP-21419

VOLVO FREZELİ DİSKLİ ÖN PORYA
WHEEL HUB (FOR BRAKE DISC)



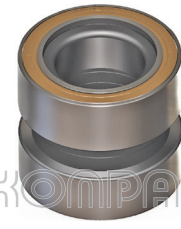
OEM

85111792 - 85105692 - 3989919 - 3099341 - 20534900

Pos	A	B	C	D	E
F	110	110	27,15	160	383,5

NPR-21419

VOLVO FREZELİ DİSKLİ ÖN PORYA RULMANI
WHEEL HUB BEARING



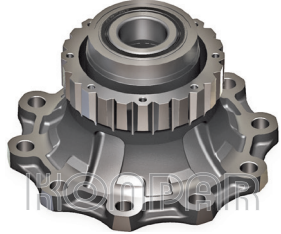
OEM

566427 H 195

Pos	A	B	C	D	E

NPK-21419

VOLVO FREZELİ DİSKLİ ÖN PORYA KİT
WHEEL HUB KIT



OEM

Pos	A	B	C	D	E

NP-21422

VOLVO FH-16 KAMPANALI ÖN PORYA
WHEEL HUB / FRONT (FOR BRAKE DISC)



OEM

21024160 - 21024166 - 20534905 - 20535904 - 20581399 - 21024164

Pos	A	B	C	D	E
F	125	125	25	164,5	384

NP-21423

VOLVO F SERİSİ CERLİ KAMPANALI ÇEKİCİ
PORYA WHEEL HUB/REAR (FOR BRAKE DISC)



OEM

20535207 - 20819804 - 1075408 - 20820402 - 1075428 - 1076526 - 21328181 - 21328177 - 20819806

Pos	A	B	C	D	E
R	148	148	25,25	157	385,5

NP-21424

VOLVO KAMPANALI ÖN PORYA
WHEEL HUB/FRONT (FOR BRAKE DISC)



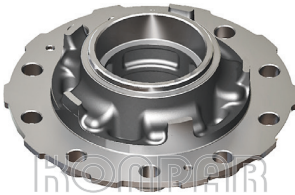
OEM

20518092 - 21024155 - 3988674

Pos	A	B	C	D	E
F	125	125	27,15	164,5	387

NP-21425

VOLVO F SERİSİ E.M. CERLİ KAMPANALI ÇEKİCİ
PORYA WHEEL HUB/REAR (FOR BRAKE DISC)



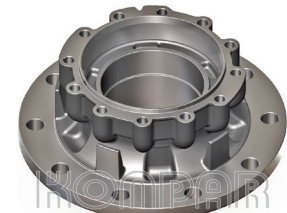
OEM

20517164 - 85104301 - 1078053

Pos	A	B	C	D	E
R	148	148	27,15	157	385,5

NP-21427

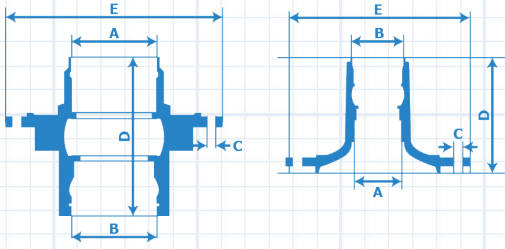
VOLVO Y.M. KAMPANALI ÇEKİCİ PORYA
WHEEL HUB/REAR (FOR BRAKE DISC) (NEW MODEL)



OEM

20499881 - 20820420

Pos	A	B	C	D	E
R	148	148	25	197,5	383,5



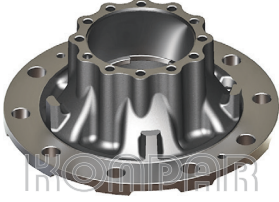
A : Diameter of Outer Bearing Seat
Dış Rulman Yatağı Çapı
B : Diameter of Inner Bearing Seat
İç Rulman Yatağı Çapı
C : Diameter of Bolt Holes
Bijon Delik Çapı
D : Total Height
Komple Boy
E : Outer Diameter of the Hub
Dış Çap

F : FRONT
R : REAR
T : TRAILER

VOLVO - NEOPLAN - FORD - HYUNDAI

NP-21429

VOLVO FM 9 ÇEKİCİ PORYA
WHEEL HUB / REAR

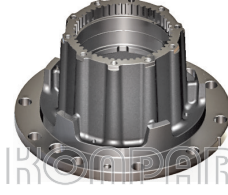


OEM

Pos	A	B	C	D	E
R	148	148	27	191,2	383

NP-21502

NEOPLAN OTOBÜS KAMPANALI FREZELİ ÇEKİCİ
PORYA WHEEL HUB / REAR



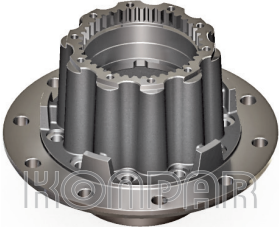
OEM

4472435160 - 0003560401

Pos	A	B	C	D	E
R	160	165	22,35	243	369

NP-21504

NEOPLAN OTOBÜS DİSKLİ FREZELİ ÇEKİCİ PO-
RYA WHEEL HUB / REAR (FOR BRAKE DISC)



OEM

4472435370 - 4472433570

Pos	A	B	C	D	E
R	160	165	22,35	252	384

NP-21760

FORD CARGO 3530 CERLİ KAMPANALI ÇEKİCİ
PORYA WHEEL HUB / REAR (FOR BRAKE DISC)



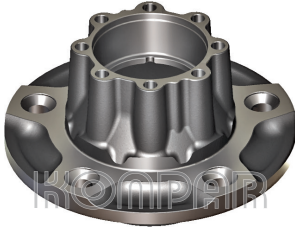
OEM

20535207

Pos	A	B	C	D	E
R	148	148	25,25	157	385,5

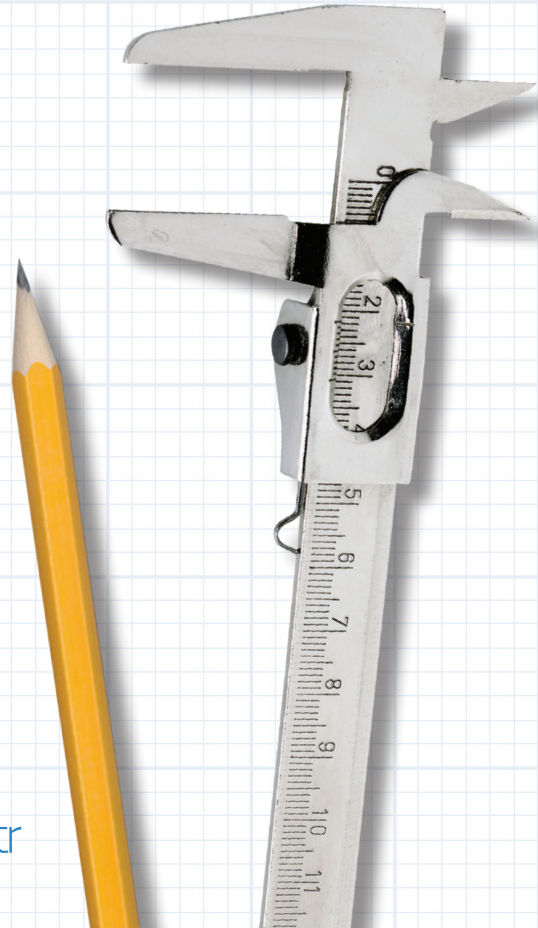
NP-25044

HYUNDAI HD65 ARKA PORYA
WHEEL HUB / REAR



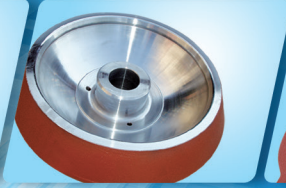
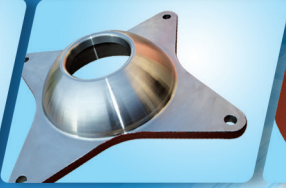
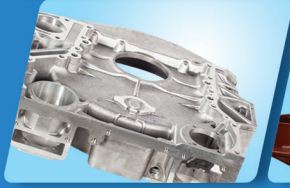
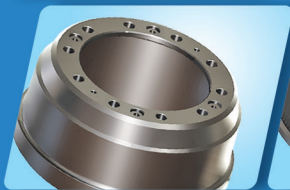
OEM

Pos	A	B	C	D	E
R					





**We're at your service
by providing high quality products**



BRAKE DISC

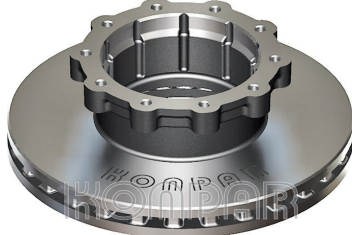
FREN DİSKİ



MERCEDES

NP-0101

MERCEDES 0403-0404



OEM

3564211012 - 3564210312 - 3564211212

Pos	A	B	H	C	I	N	Q
F-R	438	45	135	195	235	10	M14 1.5

NP-0102

MERCEDES ACTROS / AXOR



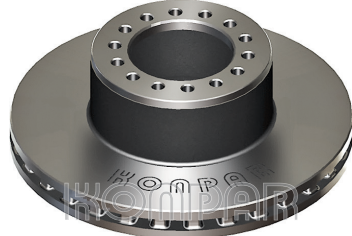
OEM

9424212112 - 9424211212 - 9424210912 - 9424211012
9424211112 - II34600 - II37638 - II376380061

Pos	A	B	H	C	I	N	Q
F-R	430	45	133	211	238	10	M14 1.5

NP-0104

MERCEDES 15.17 ATEGO ÖN
(FRONT)



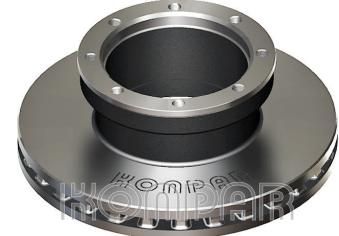
OEM

9754210012 - 9754210112 - 9754210212 9754219112 -
6754210112 - II30676

Pos	A	B	H	C	I	N	Q
F	377	45	134	105.5	138	14	15

NP-0105

MERCEDES 15.17 ATEGO ARKA
(REAR)



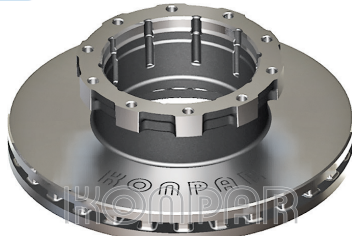
OEM

9754230612 - 9754230012 - 6754210312 - 6754230312
9754210312 - 9754230312 - 9754290612 - II30677

Pos	A	B	H	C	I	N	Q
R	377	45	138	176	201	8	M14 1.5

NP-0106

MERCEDES 560



OEM

2069432001 - 8285390000 - 501313313 - 204556

Pos	A	B	H	C	I	N	Q
F	432	45	135	194	220	10	M16 1.5

NP-0107

MERCEDES NIEDERFLUR NF 3



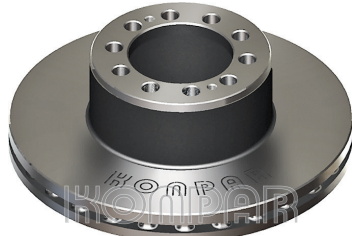
OEM

082135830 - 234110 - II37191 - II31025 - 0501315228

Pos	A	B	H	C	I	N	Q
F	430	45	131	203	235	10	M16 1.5

NP-0108

MERCEDES AXOR YENİ MODEL
(NEW MODEL)



OEM

9434210312

Pos	A	B	H	C	I	N	Q
F	430	45	143	131	168	10 2	21 M12

NP-0109

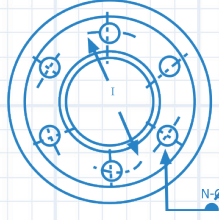
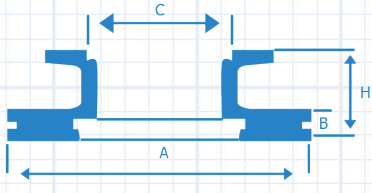
MERCEDES KOLUMAN MIDILLI TRAILER



OEM

6754210012

Pos	A	B	H	C	I	N	Q
T	377	45	131.5	210	239	10	M14 1.5



A : Balata Çapı - Diameter Inside
 B : Balata Boyu - Brake Surface
 H : Komple Boy - Total Height
 C : Göbek Çapı - Hub Diameter
 I : Delik Merkezi - Distance Between Holes
 N : Delik Sayısı - Hole Quantity
 Q : Delik Çapı - Hole Diameter

F : FRONT
 R : REAR
 T : TRAILER

MERCEDES

NP-0112

MERCEDES MB 240



OEM

6884210212 - 6884210012

Pos	A	B	H	C	I	N	Q
F	312	34	82	118	140	6	M12 1.5

NP-0114

MERCEDES MB 260



OEM

6704210312 - 6704210112 - 6703560312

Pos	A	B	H	C	I	N	Q
F	324	30	91	118	140	6	M12 1.5

NP-0115

MERCEDES MB 260
(ABS)



WITH ABS

OEM

6884230212 - 6884230012

Pos	A	B	H	C	I	N	Q
R	312	34	115.5	157	192	6	M12 1.5

NP-0123

MERCEDES ATEGO 10 DELİK
(HOLES)



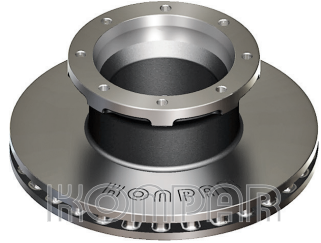
OEM

9704210112 - 9704210012 - 9704210612

Pos	A	B	H	C	I	N	Q
F	335	34	102.5	92	120	10	M12 1.5

NP-0124

MERCEDES ATEGO 8 DELİK / HOLES
(EUROPE)



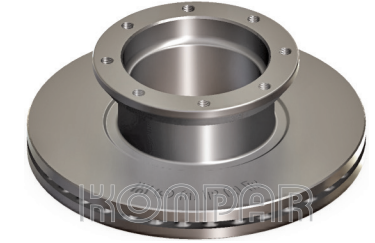
OEM

9704230212

Pos	A	B	H	C	I	N	Q
R	330	34	130	145	177	8	M12 1.5

NP-0125

MERCEDES ATEGO 712-823



OEM

9704230412 - 9704230612

Pos	A	B	H	C	I	N	Q
R	335	34	111	145	177	8	M12 1.5

NP-0127

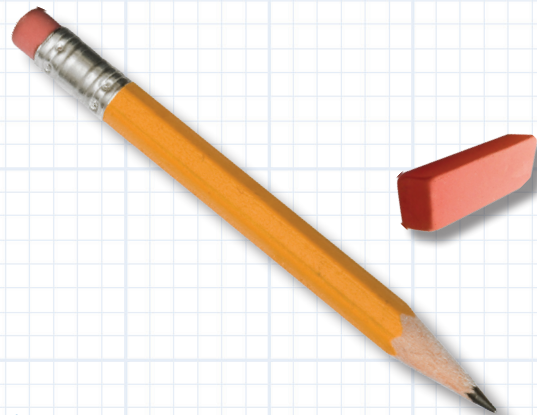
MERCEDES AROCS ÖN FREN DİSKİ



OEM

9604210312 - 9604210412 - 9604210512

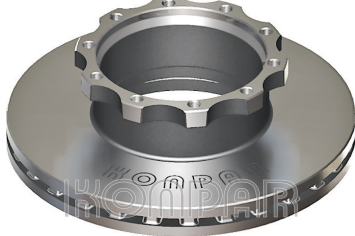
Pos	A	B	H	C	I	N	Q
R	430	45	131	131	168	10 2	M12 1.5



MAN

NP-0201

MAN 19.463 SG 90 F 2000 10 DELİK
(HOLES)



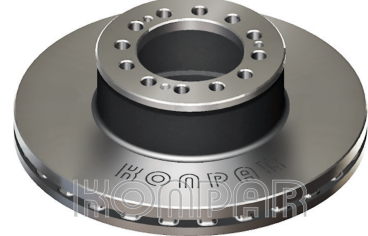
OEM

81508030009 - 81508030014 - 81508030001 81508030015 -
1139289F

Pos	A	B	H	C	I	N	Q
F	438	45	135	200	235	10	M16 1.5

NP-0202

MAN 19.463 SG 90 F 2000 12 DELİK
(HOLES)



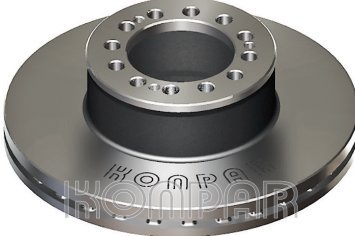
OEM

81508030023 - 81508030038 - 81508030031

Pos	A	B	H	C	I	N	Q
F	432	45	130	131	168	12 3	19 M12

NP-0203

MAN T.G.A 18.410/460 ÖN
(FRONT)



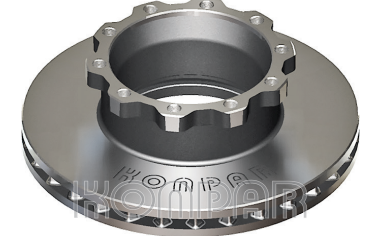
OEM

81508030040 - 81508030046

Pos	A	B	H	C	I	N	Q
F	432	45	130	131	168	12 3	19 M12

NP-0204

MAN T.G.A 18.410/460 ARKA
(REAR)



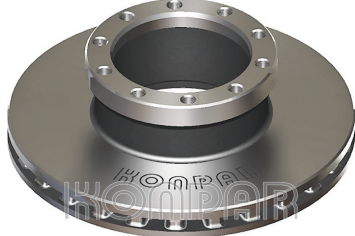
OEM

81508030041 - 81508030021 - 81508030047

Pos	A	B	H	C	I	N	Q
R	432	45	135	208	235	10	M16 1.5

NP-0205

MAN 12.153 ÖN
(FRONT)



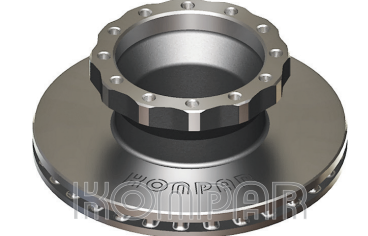
OEM

81508030026 - 81508030024

Pos	A	B	H	C	I	N	Q
F	330	34	104	135	158	10	M14 1.5

NP-0206

MAN 12.153 ARKA
(REAR)



OEM

81508030022 - 81508030061

Pos	A	B	H	C	I	N	Q
R	330	34	124	157	180	12	M12 1.5

NP-0207

MAN 10.153



OEM

81508030010

Pos	A	B	H	C	I	N	Q
F	324	30	102	135	158	10	M14 1.5

NP-0208

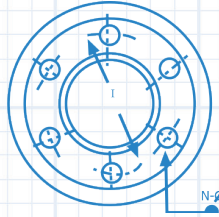
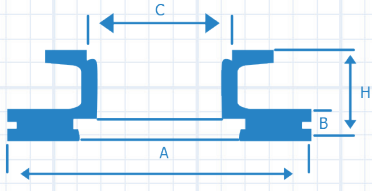
MAN 12.163



OEM

81508030026 - 81508030024

Pos	A	B	H	C	I	N	Q
F	330	34	104	135	158	10	M14 1.5



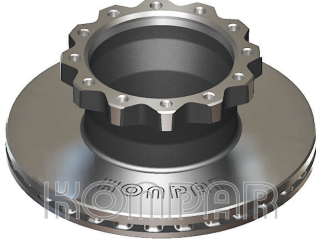
A : Balata apı - Diameter Inside
 B : Balata Boyu - Brake Surface
 H : Komple Boy - Total Height
 C : Gbek apı - Hub Diameter
 I : Delik Merkezi - Distance Between Holes
 N : Delik Sayısı - Hole Quantity
 Q : Delik apı - Hole Diameter

F : FRONT
 R : REAR
 T : TRAILER

MAN

NP-0209

MAN 12.163 ARKA
 (REAR) ABS



OEM
 81508030022 - 81508030061

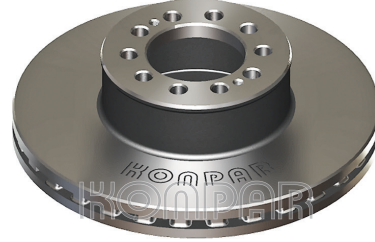


WITH ABS

Pos	A	B	H	C	I	N	Q
R	330	34	124	157	180	12	M12 1.5

NP-0210

MAN T.G.L 12.180 N
 (FRONT)

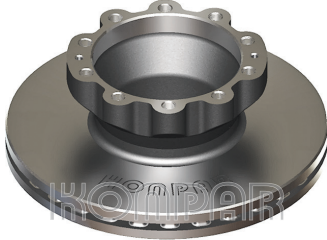


OEM
 81508030042 - 81508030053

Pos	A	B	H	C	I	N	Q
F	335	34	93	90	122	10 2	15 M10x1.5

NP-0211

MAN T.G.L 12.180 ARKA
 (REAR) ABS



OEM
 81508030063 - 81508030062 - 8150800054

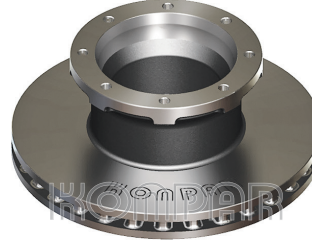


WITH ABS

Pos	A	B	H	C	I	N	Q
R	335	34	118	154	176	10 2	M14 M8

NP-0213

MAN L2000

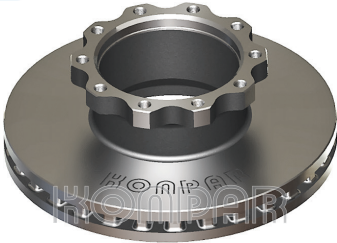


OEM
 81508030039

Pos	A	B	H	C	I	N	Q
R	330	34	130	145	177	6	M12 1.5

NP-0214

MAN 18.222



OEM
 81508030020 - 81508030027 - 81508030057 - II39290F

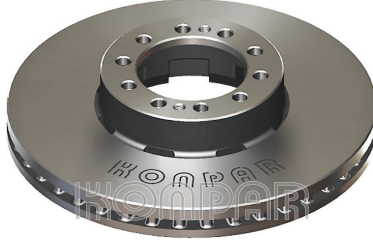
Pos	A	B	H	C	I	N	Q
F	377	45	128	162	195	10	M14 1.5

Please follow
 our website
 to screen
 upcoming products

RENAULT

NP-0401

RENAULT MAGNUM PREMIUM AE-385



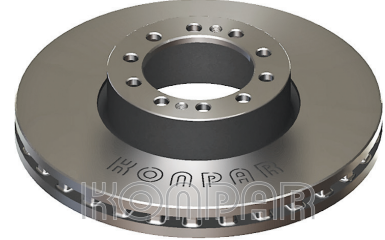
OEM

5010216437

Pos	A	B	H	C	I	N	Q
F	438	45	97	131	165	10 2	17 M14

NP-0402

RENAULT 400 - 420



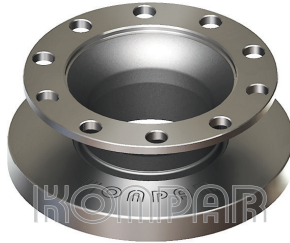
OEM

5010422593 - 504134958 - 5010422363 - 5006172150

Pos	A	B	H	C	I	N	Q
F	434	45	97	131	165	10 2	17 M14

NP-0403

RENAULT 420



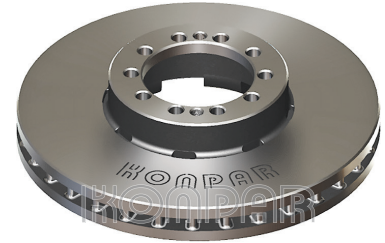
OEM

5010525326

Pos	A	B	H	C	I	N	Q
R	435	45	163	260	335	10	32.75

NP-0404

RENAULT 210 MIGNUM



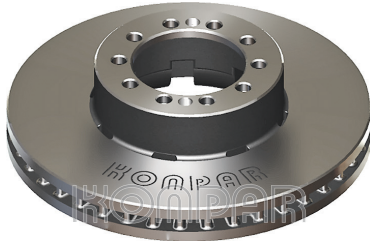
OEM

5010260218

Pos	A	B	H	C	I	N	Q
F	380	45	85	117	144	10 2	15 M14x2

NP-0405

RENAULT 220



OEM

5010525014

Pos	A	B	H	C	I	N	Q
F	376	45	99	117	144	10 2	15 M14

NP-0406

RENAULT 220 / 10 DELİK
(HOLES)



OEM

5010525364

Pos	A	B	H	C	I	N	Q
R	377	45	168	262	335	10	33

NP-0407

RENAULT 440



OEM

5001864498

Pos	A	B	H	C	I	N	Q
F-R	434	45	45	220			

NP-0408

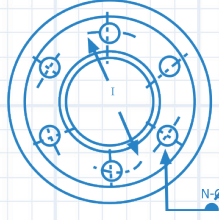
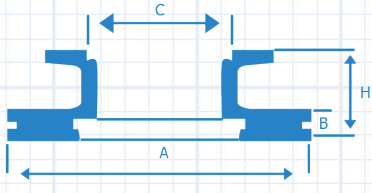
RENAULT 220 8 DELİK
(HOLES)



OEM

5010525362 - 5010525015

Pos	A	B	H	C	I	N	Q
R	377	45	166	222	275	8	22



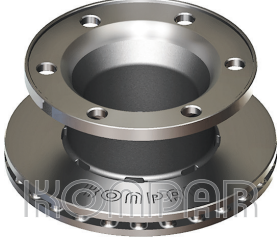
A : Balata Çapı - Diameter Inside
 B : Balata Boyu - Brake Surface
 H : Komple Boy - Total Height
 C : Göbek Çapı - Hub Diameter
 I : Delik Merkezi - Distance Between Holes
 N : Delik Sayısı - Hole Quantity
 Q : Delik Çapı - Hole Diameter

F : FRONT
 R : REAR
 T : TRAILER

RENAULT

NP-0410

RENAULT BUDSAN



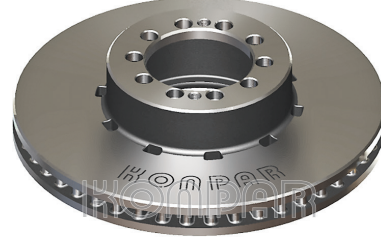
OEM

5010250101 - 5010260101 - 5010216931

Pos	A	B	H	C	I	N	Q
F	304	30	135	250	205	6	21

NP-0412

RENAULT 150 MIDLUM



OEM

5010422262

Pos	A	B	H	C	I	N	Q
F	330	34	80	95	118	10 2	15 M12

NP-0414

RENAULT 460



OEM

Pos	A	B	H	C	I	N	Q
F-R	434	45	45	220			

NP-0415

RENAULT 460-480



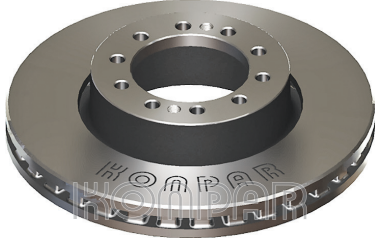
OEM

5010422364

Pos	A	B	H	C	I	N	Q
R	435	45	160	224.1	256	12	M14

NP-0416

RENAULT 280 YENİ MODEL
(NEW MODEL)



OEM

5010598308

Pos	A	B	H	C	I	N	Q
F	410	45	93	131	165	10 2	17 M14

NP-0418

RENAULT 280 ARKA
(REAR)



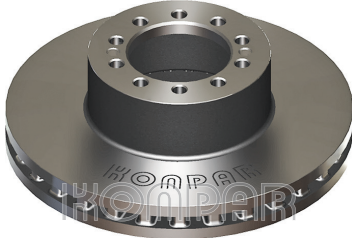
OEM

5010598309

Pos	A	B	H	C	I	N	Q
R	410	45	181.75	262	335	10	32.75

NP-0419

RENAULT 220 ÖN YENİ MODEL
(FRONT / NEW MODEL)



OEM

5010598305

Pos	A	B	H	C	I	N	Q
F	375	45	119	111	142	10 2	15 M12

NP-0420

RENAULT 220 ARKA YENİ MODEL
(REAR / NEW MODEL)



OEM

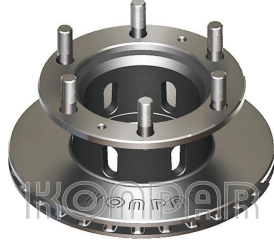
5001867798

Pos	A	B	H	C	I	N	Q
R	410	45	45	220			

IVECO

NP-0507

IVECO 85-12/120-14



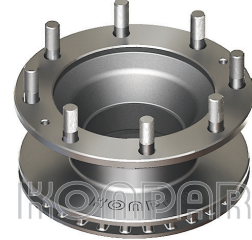
OEM

07171274 - 01904532 - 7168368 - 42830

Pos	A	B	H	C	I	N	Q
F	315	26	118.5	160	205	6 2	18 M10

NP-0508

IVECO EUROBUS ÖN
(FRONT)



OEM

7182772-Y - 1908578

Pos	A	B	H	C	I	N	Q
F	322	30	134	215	275	8 2	20 M10

NP-0509

IVECO EUROBUS ARKA
(REAR)



OEM

7182770-Y - 1908578

Pos	A	B	H	C	I	N	Q
R	322	30	134	215	275	8 2	20 M10

NP-0510

IVECO EUROTECH



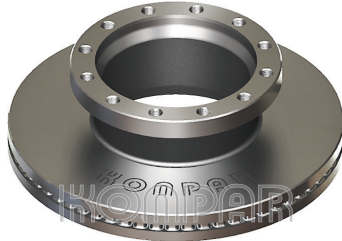
OEM

01907631 - 01908729 - 1908614 - 2991979
7173317 - 7180111 - 4856912

Pos	A	B	H	C	I	N	Q
F	430	50	102	170	195	12	M16 2

NP-0511

IVECO EUROSTAR



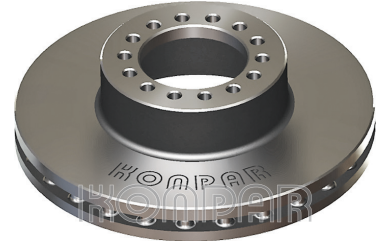
OEM

01906461 - 01906438 - 2992470 - 2992477 - 2996327
2996329 - 2996378 - 7179778 - 7182305 - 7184136 - II37654

Pos	A	B	H	C	I	N	Q
F	436	45	138	210	240	12	M16 2

NP-0512

IVECO EUROCARGO 220E21



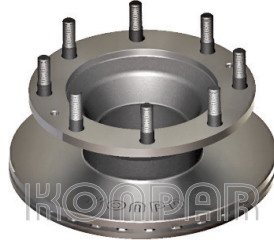
OEM

2995894 - 2995702 - 7187541

Pos	A	B	H	C	I	N	Q
F	377	45	107	113	144	14	15

NP-0513

IVECO EUROCARGO 220E21 BİJONLU
(WITH BOLT)



OEM

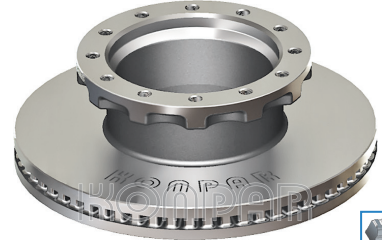
2992636 - 7184078

WITH ABS

Pos	A	B	H	C	I	N	Q
R	377	45	151	225	275	8 2	22 M10

NP-0515

IVECO STRALIS
(ABS)

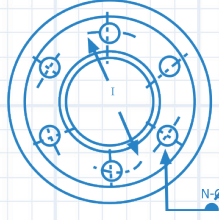
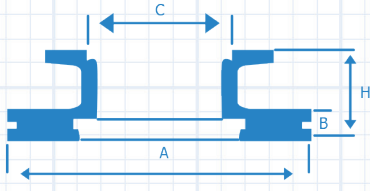


OEM

2995812 - 2996328 - 7189476 - 7185503

WITH ABS

Pos	A	B	H	C	I	N	Q
R	432	45	154	210	240	12	M16 2



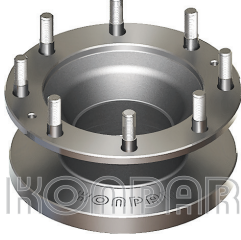
A : Balata Çapı - Diameter Inside
 B : Balata Boyu - Brake Surface
 H : Komple Boy - Total Height
 C : Göbek Çapı - Hub Diameter
 I : Delik Merkezi - Distance Between Holes
 N : Delik Sayısı - Hole Quantity
 Q : Delik Çapı - Hole Diameter

F : FRONT
 R : REAR
 T : TRAILER

IVECO

NP-0518

IVECO EUROBUS ÖN SOĞUTMASIZ
 (FRONT / SOLID)

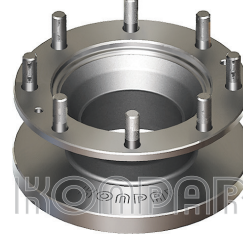


OEM
 75644 - 76267

Pos	A	B	H	C	I	N	Q
F	322	30	134	215	275	8 2	20 M10

NP-0519

IVECO EUROBUS ARKA SOĞUTMASIZ
 (REAR / SOLID)

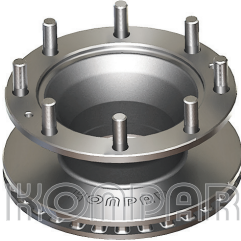


OEM
 75644 - 76266

Pos	A	B	H	C	I	N	Q
R	322	30	134	215	275	8 2	20 M10

NP-0521

IVECO 120E21 EURO CARGO (ABS)



OEM
 01906466 - 7183632



WITH ABS

Pos	A	B	H	C	I	N	Q
R	330	34	141	215	275	8 2	20 M10

NP-0522

IVECO 85E13 EURO CARGO

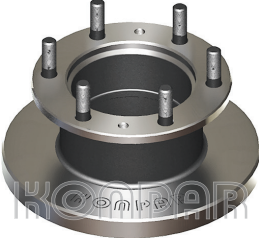


OEM
 60260 - 77794

Pos	A	B	H	C	I	N	Q
F	322	30	134	160	205	6 2	18 M10

NP-0523

IVECO 85E13 EURO CARGO SOĞUTMASIZ
 (SOLID)

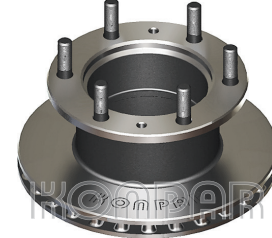


OEM
 76258

Pos	A	B	H	C	I	N	Q
F	322	30	134	160	205	6 2	18 M10

NP-0524

IVECO 85E13 EURO CARGO

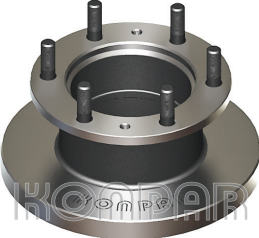


OEM
 74305

Pos	A	B	H	C	I	N	Q
R	322	30	134	160	205	6 2	18 M10

NP-0525

IVECO 85E13 EURO CARGO ARKA SOĞUTMASIZ
 (REAR / SOLID)

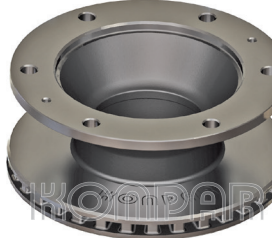


OEM
 66643

Pos	A	B	H	C	I	N	Q
R	322	30	134	160	205	6 2	18 M10

NP-0526

IVECO EURO CARGO 100E 18



OEM
 7189265 - 7189456 - 2996418 - 2996419

Pos	A	B	H	C	I	N	Q
	330	32	130	185	245	6 2	20 M10

IVECO

NP-0527

IVECO EUROCARGO 100E 18 (ABS) ARKA



OEM

7189456

WITH ABS

Pos	A	B	H	C	I	N	Q
F	290	22	110.5	125	170	6 6	M18 13

NP-0540

IVECO DAILY 35-C-15 (ABS)



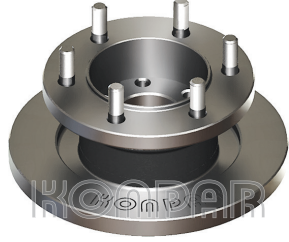
OEM

42546401 - 504079365 - 504080994

Pos	A	B	H	C	I	N	Q
F	290	22	110.5	125	170	6 6	M18 13

NP-0541

IVECO DAILY ÖN (FRONT)



OEM

42470842 - 1908772 - 93821918

Pos	A	B	H	C	I	N	Q
F	290	22	111	125	170	6 6	M18 13

NP-0542

IVECO DAILY ARKA (REAR)



OEM

42471111 - 1908773 - 1908793 - 7180256

Pos	A	B	H	C	I	N	Q
R	289	22	85	84	108	8	10.5

NP-0543

IVECO DAILY 65-C-15 ÖN (FRONT)



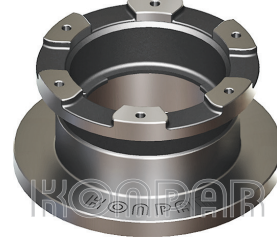
OEM

42471214

Pos	A	B	H	C	I	N	Q
F	290	26	53	80	110	9	12.5

NP-0544

IVECO DAILY 65-C-15 ARKA (REAR)



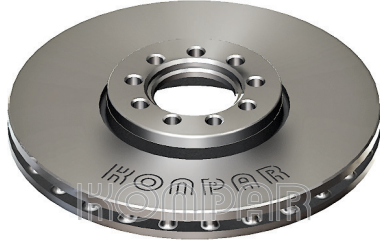
OEM

7182874 - 42471150

Pos	A	B	H	C	I	N	Q
R	306	22	137	178	215	6	M10 1.25

NP-0545

IVECO DAILY 35-C-15 ÖN Y.M. (FRONT / NEW MODEL)



OEM

2996121

Pos	A	B	H	C	I	N	Q
F	290	28	46	74	95	9	12.5

NP-0546

IVECO DAILY 35-C-15 ARKA Y.M. (REAR / NEW MODEL)

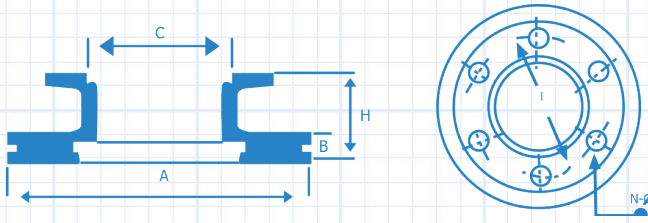


OEM

2996043

WITH ABS

Pos	A	B	H	C	I	N	Q
R	294	24	87.5	84	108	8	10.5



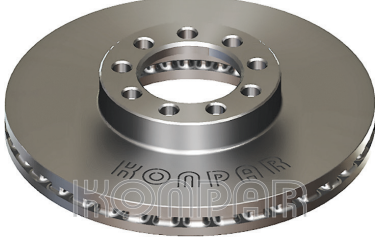
A : Balata Çapı - Diameter Inside
 B : Balata Boyu - Brake Surface
 H : Komple Boy - Total Height
 C : Göbek Çapı - Hub Diameter
 I : Delik Merkezi - Distance Between Holes
 N : Delik Sayısı - Hole Quantity
 Q : Delik Çapı - Hole Diameter

F : FRONT
 R : REAR
 T : TRAILER

IVECO - OTOKAR

NP-0547

IVECO DAILY 70-C-15 ÖN Y.M.
 (FRONT / NEW MODEL)



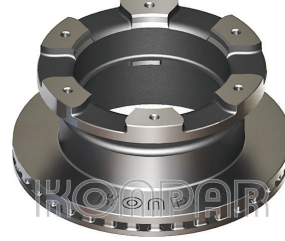
OEM

504121723 - 2996122

Pos	A	B	H	C	I	N	Q
F	301	30	59	83	111	9	14.5

NP-0548

IVECO DAILY 70-C-15 ARKA
 (REAR)



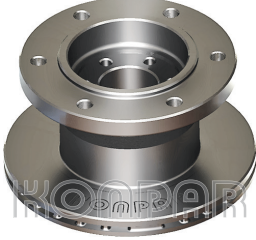
OEM

7186848 - 2996049

Pos	A	B	H	C	I	N	Q
R	306	28	132	178	216	6	M10 1.5

NP-0605

MAGIRUS YENİ MODEL
 (NEW MODEL)



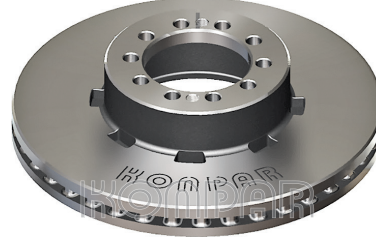
OEM

12E0008248

Pos	A	B	H	C	I	N	Q
F	290	25	160	120	205	6 6	M18 13

NP-0610

OTOKAR SULTAN ÖN
 (FRONT)



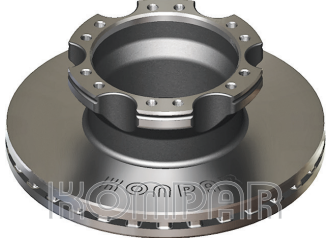
OEM

13C2505572BA

Pos	A	B	H	C	I	N	Q
F	330	34	80	95	118	10 2	15 M12

NP-0611

OTOKAR SULTAN ARKA
 (REAR) ABS



OEM

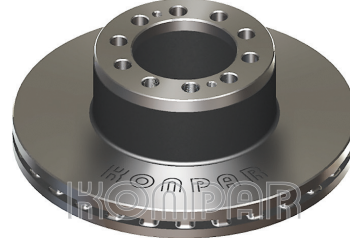
13C3508390BA

WITH ABS

Pos	A	B	H	C	I	N	Q
R	330	34	119	150	175	12	M12

NP-0612

OTOKAR DORUK OTOBÜS ÖN (FRONT)



OEM

16H00-05-464AA

Pos	A	B	H	C	I	N	Q
F	377	45	130	105	144	10 1	14.5 M12

NP-0613

OTOKAR DORUK OTOBÜS ARKA
 (REAR) ABS



OEM

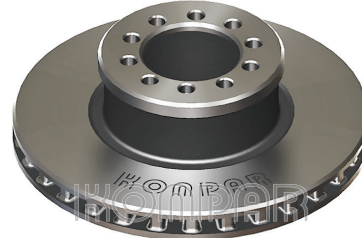
16F00-05-248AA

WITH ABS

Pos	A	B	H	C	I	N	Q
R	377	45	138.5	169	196	8	M14 1.5

NP-0614

SULTAN (EURO 4) Y.M. ÖN
 (NEW MODEL / FRONT)



OEM

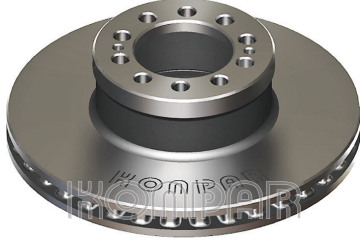
13C33-0557

Pos	A	B	H	C	I	N	Q
F	335	34	102.5	92	120	10	14.5

ISUZU - MITSUBISHI

NP-0810

ISUZU CITIBUS



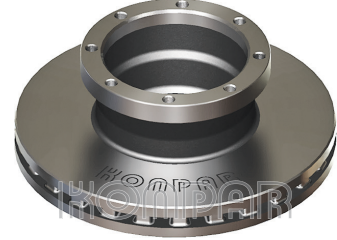
OEM

377777391054

Pos	A	B	H	C	I	N	Q
F	330	34	102.5	91.70	122	10 2	15 M10

NP-0818

ISUZU - CITIMARK



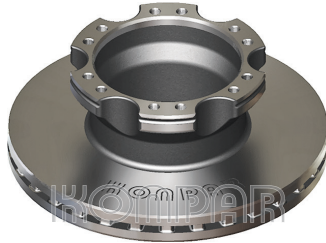
OEM

WITH ABS

Pos	A	B	H	C	I	N	Q
R	375	45	139	169	196	8	M14 1.5

NP-0820

ISUZU - NOVO LUX ABS



OEM

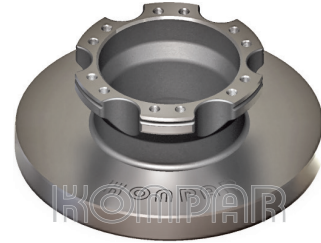
3870143170

WITH ABS

Pos	A	B	H	C	I	N	Q
R	330	34	119	150	175	12	M12

NP-0821

ISUZU - NOVO LUX DOLU
(SOLID)



OEM

WITH ABS

Pos	A	B	H	C	I	N	Q
	330	34	119	150	175	12	M12 14

NP-0910

MITSUBISHI EURO 5 ÖN
(FRONT)



OEM

MK584503Y

Pos	A	B	H	C	I	N	Q
F	310	40	53,5	114	140	6	M 12 1,75

NP-0911

MITSUBISHI EURO 5 ARKA
(REAR)

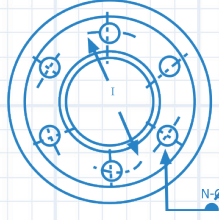
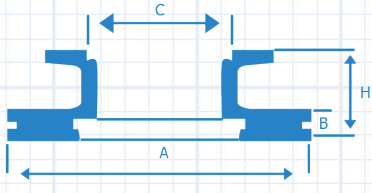


OEM

MK584504Y

Pos	A	B	H	C	I	N	Q
R	310	40	70	139	160	12	10





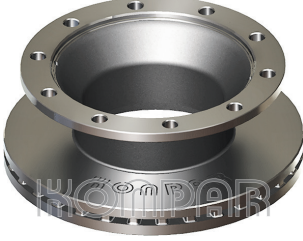
A : Balata Çapı - Diameter Inside
 B : Balata Boyu - Brake Surface
 H : Komple Boy - Total Height
 C : Göbek Çapı - Hub Diameter
 I : Delik Merkezi - Distance Between Holes
 N : Delik Sayısı - Hole Quantity
 Q : Delik Çapı - Hole Diameter

F : FRONT
 R : REAR
 T : TRAILER

BPW - FRUEHAUF - SAF

NP-1002

BPW KOGEL TRAILER



OEM

0308835010

Pos	A	B	H	C	I	N	Q
T	430	45	160	290	335	10	23

NP-1003

BPW FRUEHAUF



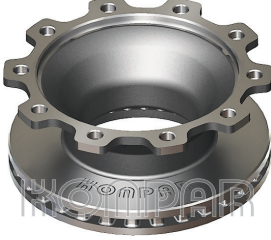
OEM

0308835030 - 0308835037

Pos	A	B	H	C	I	N	Q
T	430	45	160	290	335	10	23

NP-1004

BPW KÜÇÜK DAR BOĞAZ 020
(NARROW THROTTLE)



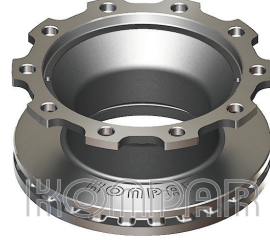
OEM

0308834020 - 0308834060 - 0308834067
 103784 - 104085

Pos	A	B	H	C	I	N	Q
T	377	45	160	290	335	10	23

NP-1005

BPW KÜÇÜK GENİŞ BOĞAZ 040
(WIDE THROTTLE)



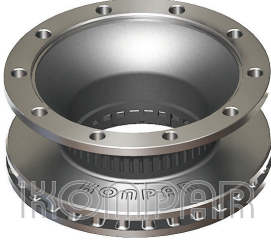
OEM

0308834080 - 0308834087

Pos	A	B	H	C	I	N	Q
T	377	45	170	290	335	10	23

NP-1006

BPW GENİŞ BOĞAZ 160'LIK 298
(WIDE THROTTLE)



OEM

0308834100 - 0308834107

Pos	A	B	H	C	I	N	Q
T	377	45	160	298	335	10	22.5

NP-1007

BPW GENİŞ BOĞAZ 160'LIK 290
(WIDE THROTTLE)



OEM

0308834040 - 0308834047 - 0300224093

Pos	A	B	H	C	I	N	Q
T	377	45	160	290	335	10	23

NP-1008

BPW KÜÇÜK 8 DELİK
(HOLES)



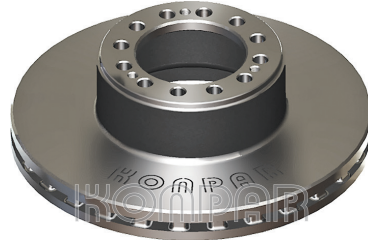
OEM

0308834010 - 0308834017 - 0308834030

Pos	A	B	H	C	I	N	Q
T	377	45	160	230	275	8	23

NP-1009

SAF TRAILER



OEM

4079000500 - 4079000501 - 4079000502

Pos	A	B	H	C	I	N	Q
T	430	45	130	131	168	12 3	19 M12

SAF - FRUEHAUF - BPW

NP-1011

SAF KÜÇÜK 8 DELİK
(HOLES)



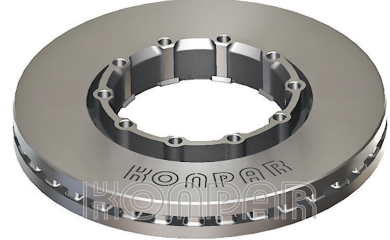
OEM

4079000400

Pos	A	B	H	C	I	N	Q
T	377	45	158	244	275	8	22.5

NP-1012

SAF KÜÇÜK GÖBEKSİZ - TRAILER



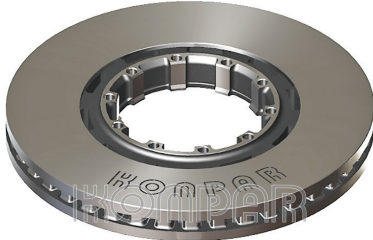
OEM

4079001001 - 4079001000 - 4079001002

Pos	A	B	H	C	I	N	Q
T	376	45	58	170.5	190	10	13.5

NP-1013

SAF BÜYÜK GÖBEKSİZ - TRAILER



OEM

4079001300 - 4079001301 - 407901300

Pos	A	B	H	C	I	N	Q
T	430	45	48	170.5	190	10	13.5

NP-1014

FRUEHAUF 170 Y.M. UZUN SCHMITZ
(NEW MODEL / LONG TYPE)



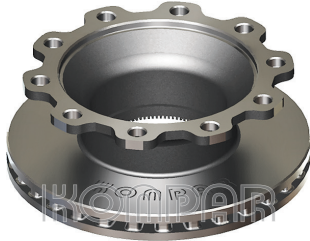
OEM

17870

Pos	A	B	H	C	I	N	Q
T	430	45	168.5	290	335	10	22

NP-1015

FRUEHAUF
(ABS) HALDEX



OEM

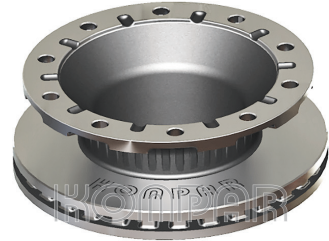
13162025 - 103696449445 - CF103696
M069018 - M200135 - MBR9007 - M069018

WITH ABS

Pos	A	B	H	C	I	N	Q
T	430	45	155	280	335	10	26

NP-1016

BPW BÜYÜK 298 GÖBEK 050
BIG 298 HUB



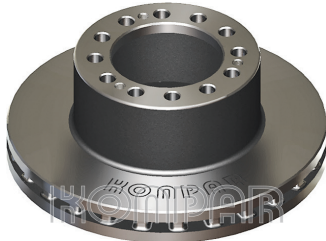
OEM

0308835050 - 0308835057

Pos	A	B	H	C	I	N	Q
T	430	45	160	298	335	10	22.5

NP-1017

SAF KÜÇÜK 12 DELİK
(HOLES)



OEM

4079000700 - 4079000701

Pos	A	B	H	C	I	N	Q
T	375	45	140	131	168	12 3	19 M12

NP-1018

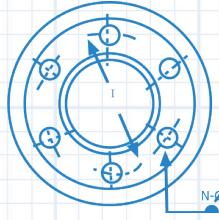
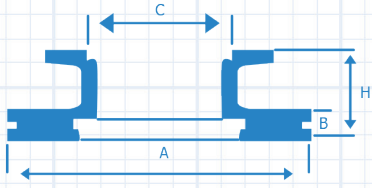
SAF BÜYÜK PAPATYA 10 DELİK
(HOLES)



OEM

4079000300

Pos	A	B	H	C	I	N	Q
T	430	45	160	276	335	10	23



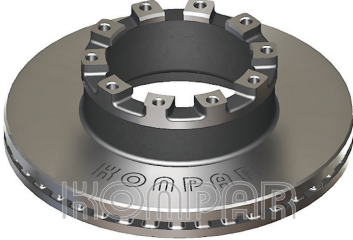
A : Balata Çapı - Diameter Inside
 B : Balata Boyu - Brake Surface
 H : Komple Boy - Total Height
 C : Göbek Çapı - Hub Diameter
 I : Delik Merkezi - Distance Between Holes
 N : Delik Sayısı - Hole Quantity
 Q : Delik Çapı - Hole Diameter

F : FRONT
 R : REAR
 T : TRAILER

SAF - GIGANT - VALX - ROR

NP-1019

SAF B9 22



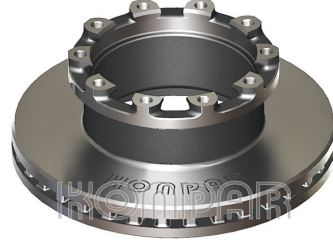
OEM

4079001700 - 4079001701

Pos	A	B	H	C	I	N	Q
T	430	45	131.5	189.25	215	10	M14 1.5

NP-1020

SAF KÜÇÜK B9



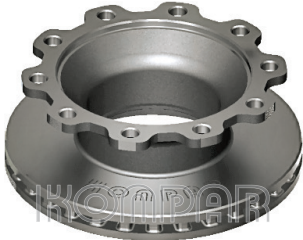
OEM

4079001800 - 4079001801

Pos	A	B	H	C	I	N	Q
T	376	45	140	189.25	215	10	M14 1.5

NP-1021

GIGANT TRAILER



OEM

9267086

Pos	A	B	H	C	I	N	Q
T	430	45	155	280	335	10	26.5

NP-1022

VALX



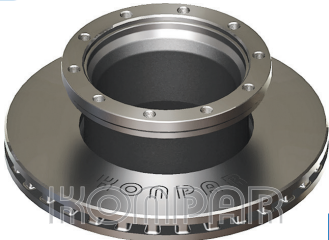
OEM

6622256114

Pos	A	B	H	C	I	N	Q
T	430	45	187,5	298	335	10	23

NP-1030

ROR TRAILER



OEM

68323825 - MBR9004 - 6832382504
 68323552

WITH ABS



Pos	A	B	H	C	I	N	Q
T	436	45	150	222	250	10	M16 2

NP-1031

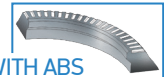
ROR Y.M. TRAILER
 (NEW MODEL) ABS



OEM

21225115 - 3218G1333 - MBR9018
 21227349 - 31788700100

WITH ABS



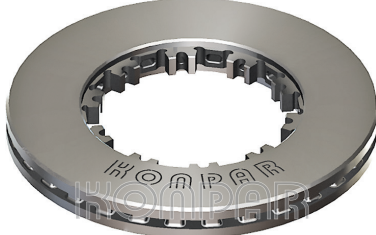
Pos	A	B	H	C	I	N	Q
T	378	45	150	222	250	10	M16

In some cases
 to be able to stop is
 much more important
 than accelerating...

DAF - SETRA - SCANIA

NP-1101

DAF CF 85 X F95



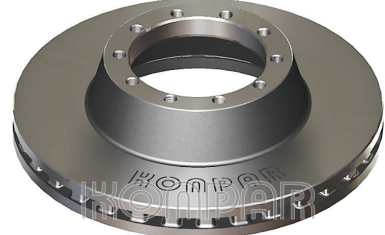
OEM

1387439 - 1640561 - 1726138 - II39112F - II39541F
II39112F - IL39541F - K004322 - Z0009911

Pos	A	B	H	C	I	N	Q
F-R	432	45	45	217			

NP-1102

DAF OTOBÜS ÇİFT KATLI
(DOUBLE-DECKER)



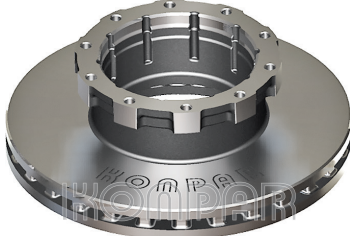
OEM

299095 - 1238372 - 299295

Pos	A	B	H	C	I	N	Q
F	460	48	119	170	195	10	M16 2

NP-1201

SETRA 317-417 Y.M.
(NEW MODEL)



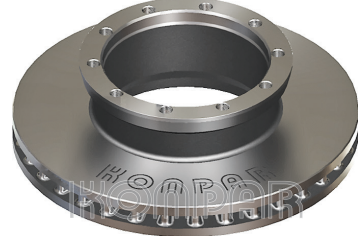
OEM

2069432001 - 8285390000 - 501313313 - 204556

Pos	A	B	H	C	I	N	Q
F	432	45	135	194	220	10	M16 1.5

NP-1202

SETRA TEK KATLI KISA BOĞAZ
(SINGLE DECKER)



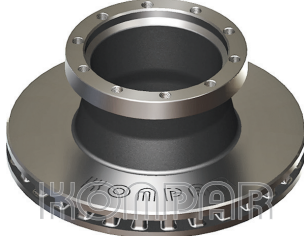
OEM

350103 - 179241111307 - 8284000147 - 179241113070

Pos	A	B	H	C	I	N	Q
F	396	45	119	194	215	10	M16 1.5

NP-1203

SETRA ÇİFT KATLI UZUN BOĞAZ
(DOUBLE DECKER)



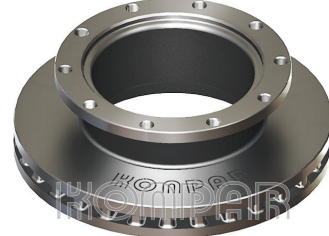
OEM

1792411111310 - 8285000235 - 179241111131 -
179241111131B

Pos	A	B	H	C	I	N	Q
F	406	48	173	194	215	10	M16 1.5

NP-1204

SETRA KOCA KAFA

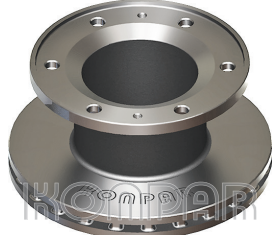


OEM

Pos	A	B	H	C	I	N	Q
F	392	47	122	215	255	10	M16 1.5

NP-1205

SETRA KÜÇÜK
(SMALL)



OEM

Pos	A	B	H	C	I	N	Q
F	316	34	154	253	205	6 2	18 M10

NP-1301

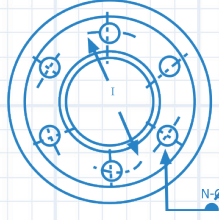
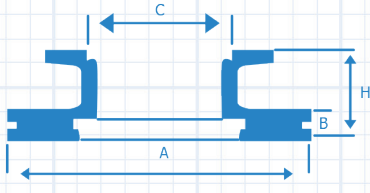
SCANIA 420



OEM

1386686 - 1402272 - 1852817 - K000510 - K000810

Pos	A	B	H	C	I	N	Q
F-R	430	45	131	208	237	10	M16 1.5



A : Balata Çapı - Diameter Inside
 B : Balata Boyu - Brake Surface
 H : Komple Boy - Total Height
 C : Göbek Çapı - Hub Diameter
 I : Delik Merkezi - Distance Between Holes
 N : Delik Sayısı - Hole Quantity
 Q : Delik Çapı - Hole Diameter

F : FRONT
 R : REAR
 T : TRAILER

VOLVO - NEOPLAN - IKARUS

NP-1401

VOLVO FH12



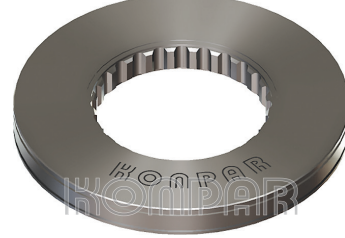
OEM

85103803 - 20515093

Pos	A	B	H	C	I	N	Q
F-R	434	45	45	220			

NP-1402

VOLVO F-H 12 SOĞUTMASIZ
(SOLID)



OEM

8551042 - 3092710

Pos	A	B	H	C	I	N	Q
F-R	434	45	45	220			

NP-1405

VOLVO EURO 5 KÜÇÜK
(SMALL)



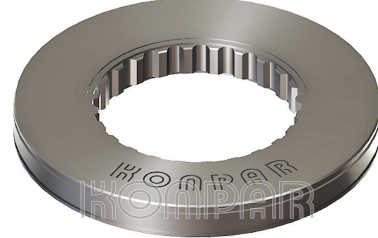
OEM

85103804 - 85110495

Pos	A	B	H	C	I	N	Q
R	410	45	45	220			

NP-1406

VOLVO EURO 5 SOĞUTMASIZ
(SOLID)



OEM

85103806

Pos	A	B	H	C	I	N	Q
F-R	410	45	45	220			

NP-1501

NEOPLAN SKYLINGER



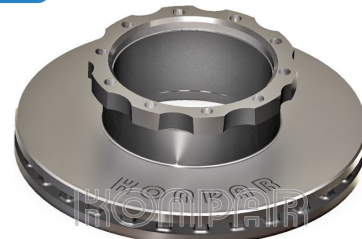
OEM

082135830 - 234110 - II37191 - II31025 - 0501315228

Pos	A	B	H	C	I	N	Q
F	430	45	131	203	235	10	M16 1.5

NP-1512

IKARUS



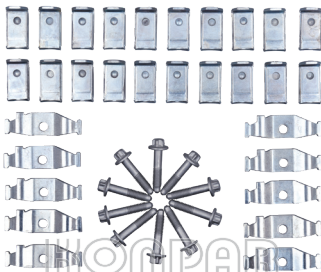
OEM

501316953

Pos	A	B	H	C	I	N	Q
F-R	430	45	130	195	228	10	16 1,5

NP-71197

BRAKE DISC LOCKING PLATE AND LEAF SPRING
SET / ŞİM TAKIMI



OEM

1690788 - 1691889 - 1393561 - 1393560 - 1693978

NP-71499

BRAKE DISC SPRING RING AND SCREWS SET /
DİSK TAMİR TAKIMI (VOLVO)



OEM

3092224

BMC - FORD

NP-1602

BMC PRO 518



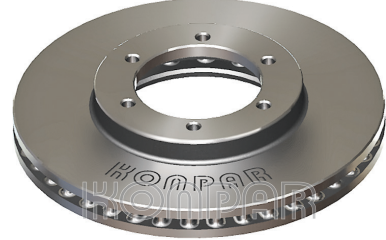
OEM

57RS300820

Pos	A	B	H	C	I	N	Q
F	330	34	124	157	180	12	M12 1.5

NP-1604

BMC LEVEND XL



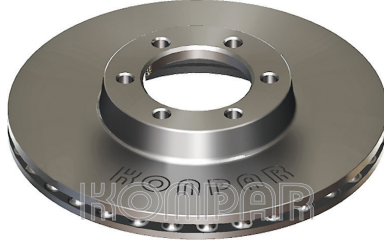
OEM

57RS304999

Pos	A	B	H	C	I	N	Q
F	316	24	53.2	108	133	6 3	12.1 M5

NP-1605

BMC 3000 NISSAN
(ABS)



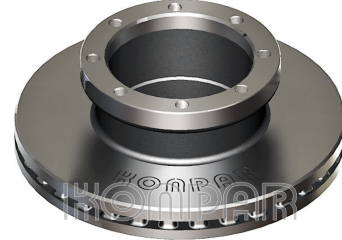
OEM

57RS302289

Pos	A	B	H	C	I	N	Q
F	301	24	85.6	53	114	6 3	12.5 M5

NP-1608

BMC PRO 180



OEM

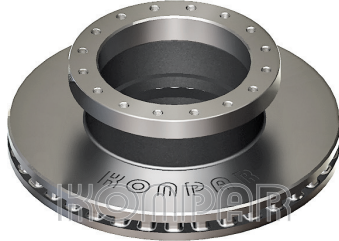
57RS305716

WITH ABS

Pos	A	B	H	C	I	N	Q
F	377	45	129	169	196	8	M14 1.5

NP-1610

BMC BELDE OTOBÜS ÖN
(FRONT)



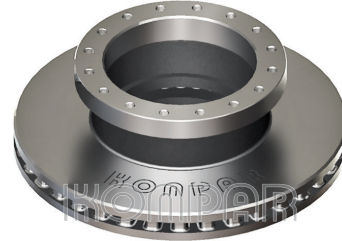
OEM

57RS307931

Pos	A	B	H	C	I	N	Q
F	430	45	138	197	240	16	M12

NP-1611

BMC BELDE OTOBÜS ARKA
(REAR) ABS



OEM

57RS305298

WITH ABS

Pos	A	B	H	C	I	N	Q
R	430	45	138	197	240	16	M12

NP-1703

FORD CARGO 1846



OEM

DC462A315AA

Pos	A	B	H	C	I	N	Q
F-R	434	45	130	203.5	237	10	M16 1.5

FLY WHEEL

VOLAN

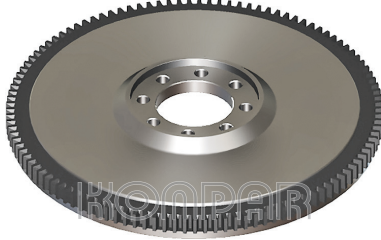


FLYWHEELS / VOLAN

MERCEDES

NP-90103

MERCEDES 309 (250MM)



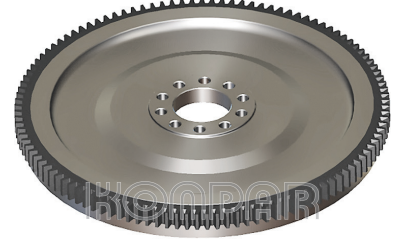
OEM

3140302805

Pos A B H C I N Q

NP-90104

MERCEDES 0302 (350MM)



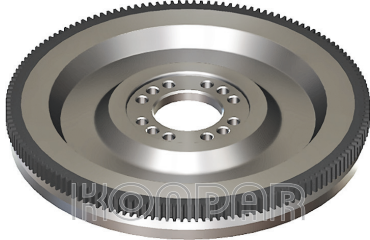
OEM

3600300811 - 3270300211

Pos A B H C I N Q

NP-90105

MERCEDES 355 (380MM)



OEM

3550301305 - 3550300905

Pos A B H C I N Q

NP-90106

MERCEDES 355 TURBO (420MM)



OEM

3450300205

Pos A B H C I N Q

NP-90107

MERCEDES EURO2 (420MM) 6 YARGI (SPLINED)



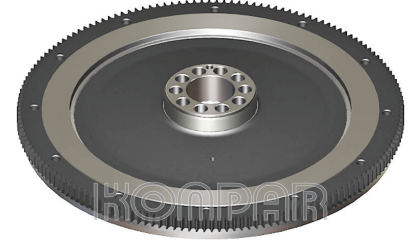
OEM

4470301805 - 4470300705

Pos A B H C I N Q

NP-90108

MERCEDES (420MM)



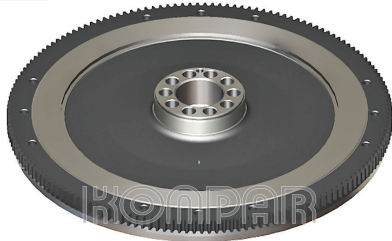
OEM

4030301405 - 4030301105

Pos A B H C I N Q

NP-90109

MERCEDES (430MM)



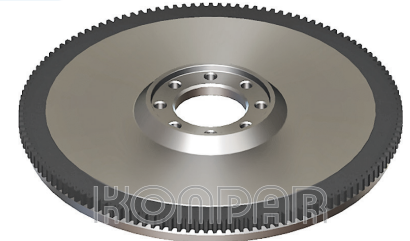
OEM

4420300205

Pos A B H C I N Q

NP-90110

MERCEDES 2517-2521 (350MM)



OEM

3520306605 - 3520307305

Pos A B H C I N Q

NP-90111

MERCEDES AXOR Y.M.(395MM) 37 SENSOR
(NEW MODEL)



OEM

9060301905

Pos A B H C I N Q

NP-90112

MERCEDES AXOR (430MM) 37 YARGI
(SPLINED)



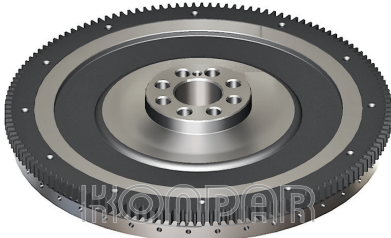
OEM

4570300605

Pos A B H C I N Q

NP-90113

MERCEDES ATEGO 37 SENSOR



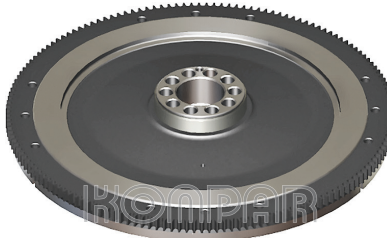
OEM

9060303205 - 9060303805

Pos A B H C I N Q

NP-90114

MERCEDES EURO 2 (430MM) 6 YARGI
(SPLINED)



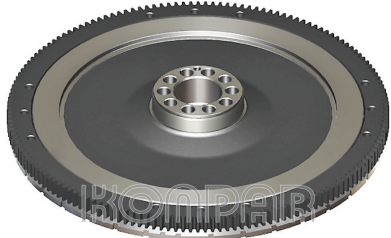
OEM

4420301905 - 4420300505

Pos A B H C I N Q

NP-90115

MERCEDES ACTROS (430 MM) 37 YARGI
(SPLINED)



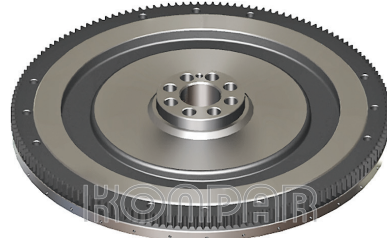
OEM

5410300105 - 5420300205

Pos A B H C I N Q

NP-90116

MERCEDES AXOR TIR (395 MM) 37 SENSOR



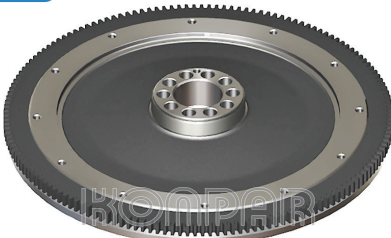
OEM

9060304605

Pos A B H C I N Q

NP-90117

MERCEDES (380 MM)



OEM

4030301305 - 4030301605

Pos A B H C I N Q

NP-90118

MERCEDES 906 AXOR - ATEGO



OEM

9060303005 - 9060303705

Pos A B H C I N Q

MERCEDES

NP-90119

MERCEDES ATEGO (310-330 MM)



OEM

3520303905 - 3440307205

Pos A B H C I N Q

NP-90121

MERCEDES 2524 (380MM)



OEM

3660300905 - 3760301305

Pos A B H C I N Q

NP-90129

MERCEDES (390 MM)



OEM

Pos A B H C I N Q

NP-90130

MERCEDES EURO 3 (430MM)
DUAL MASS



OEM

6594000007 - 4570301305 - 4570302105

Pos A B H C I N Q



MAN

NP-90203

MAN (420MM)



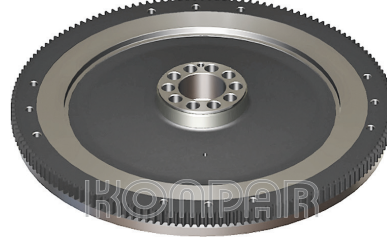
OEM

51023017300 - 51023017293

Pos A B H C I N Q

NP-90204

MAN (430MM)



OEM

51023017414

Pos A B H C I N Q

NP-90205

MAN EURO2 (430MM) 5 YARGI (SPLINED)



OEM

51023017439

Pos A B H C I N Q

NP-90206

MAN EURO2 (430MM) 6 YARGI (SPLINED)



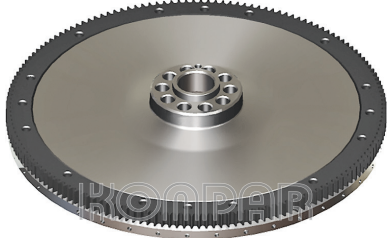
OEM

51023017440 - 51023016033

Pos A B H C I N Q

NP-90207

MAN TGA 19.430 EURO3 (430MM) 58 SENSOR



OEM

51023015258 - 51023013285 - 51023015210

Pos A B H C I N Q

NP-90208

MAN 26.230-270 (395MM)



OEM

51023010086 - 51023017389

Pos A B H C I N Q

NP-90209

MAN 12.153-163 (330MM)



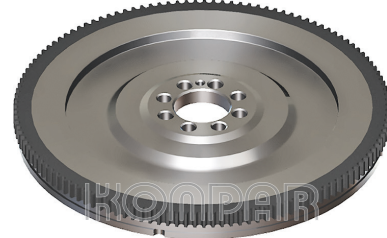
OEM

51023015109 - 51023010469

Pos A B H C I N Q

NP-90210

MAN 12.153 (330MM) 4 YARGILI (SPLINED)



OEM

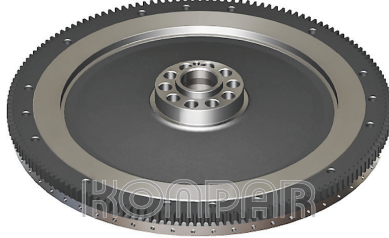
51023015184

Pos A B H C I N Q

MAN

NP-90211

MAN TGA (430 MM) 58 SENSOR



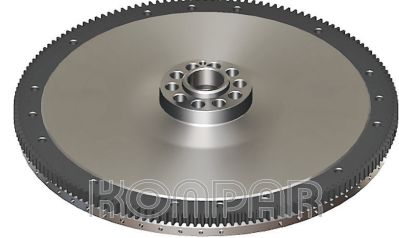
OEM

51023015209

Pos A B H C I N Q

NP-90212

MAN TGA - TGS - TGX (430 MM) 58 SENSOR



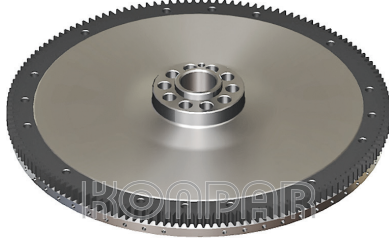
OEM

51023015210

Pos A B H C I N Q

NP-90213

MAN TGA - TGS - TGX (430 MM) 58 SENSOR



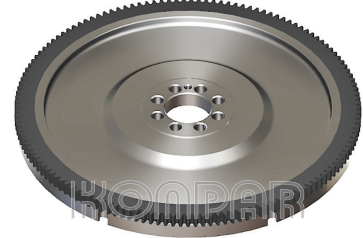
OEM

51023015259

Pos A B H C I N Q

NP-90216

MAN 32.270 (395 MM) 6 YARGI (SPLINED)



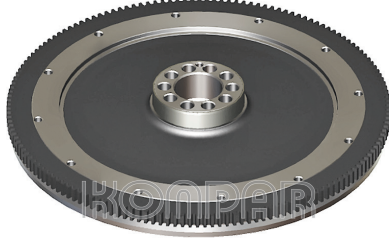
OEM

51023015121

Pos A B H C I N Q

NP-90220

MAN 32.242-32.302 (400MM)



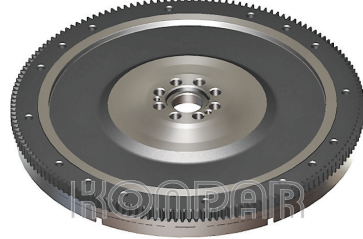
OEM

51023017410 - 51023015045

Pos A B H C I N Q

NP-90221

MAN SL 232 (430 MM) 6 YARGILI (SPLINED)



OEM

51023013280 - 51023016050

Pos A B H C I N Q

NP-90230

MAN FORTUNA (430 MM) 6 SENSOR DUAL MASS



OEM

51023016044 - 11068877

Pos A B H C I N Q

NP-90402

RENAULT PREMIUM 400



OEM

5000686610

Pos A B H C I N Q

NP-90404

RENAULT 420



OEM

5010550772

Pos A B H C I N Q

NP-90405

RENAULT 440



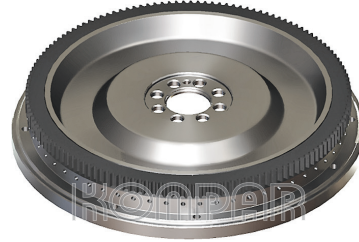
OEM

7420895903

Pos A B H C I N Q

NP-90406

RENAULT 270



OEM

5010450325

Pos A B H C I N Q

NP-90407

RENAULT 280



OEM

Pos A B H C I N Q

Transnational
production
capacity...

IVECO

NP-90501

IVECO STRALIS (430 MM)



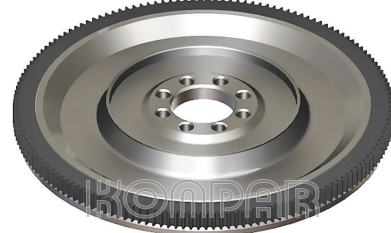
OEM

5801555078

Pos A B H C I N Q

NP-90502

IVECO (420 MM)



OEM

4840992 - 4852529

Pos A B H C I N Q

NP-90503

IVECO TRAKKER - TECH (430 MM)



OEM

98426708

Pos A B H C I N Q

NP-90504

IVECO (420 MM)



OEM

4699030

Pos A B H C I N Q

NP-90505

IVECO 50 NC Y.M. 65/9 - 35/9
(NEW MODEL)



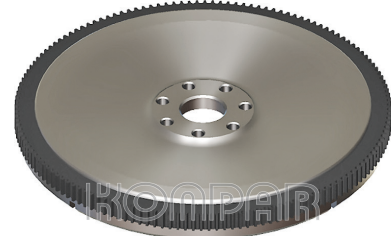
OEM

4797424

Pos A B H C I N Q

NP-90506

IVECO 85/12 - 120/14



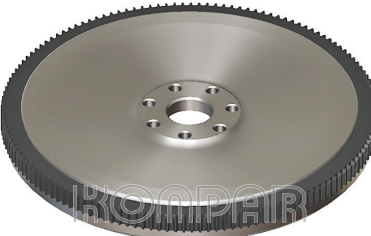
OEM

4846996

Pos A B H C I N Q

NP-90507

IVECO 85/12



OEM

4819281

Pos A B H C I N Q

NP-90510

IVECO 6 SİLİNDİR (420MM)



OEM

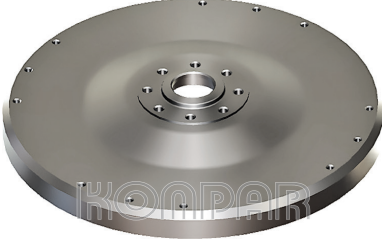
4792154

Pos A B H C I N Q

IVECO

NP-90512

IVECO PYTO (430 MM)



OEM

8850750

Pos A B H C I N Q

NP-90514

IVECO (430 MM) 6 SENSOR



OEM

99438938

Pos A B H C I N Q



ISUZU – MITSUBISHI – DAF

NP-90803

ISUZU ŞAMPİYON E.M.
(CHAMPION / OLD MODEL)



OEM

897330893001

Pos A B H C I N Q

NP-90804

ISUZU ŞAMPİYON Y.M.
(CHAMPION / NEW MODEL)



OEM

8973308930

Pos A B H C I N Q

NP-90806

ISUZU NQR



OEM

897166516

Pos A B H C I N Q

NP-90807

ISUZU NQR YENİ MODEL
(NEW MODEL)



OEM

8973262272

Pos A B H C I N Q

NP-90809

ISUZU-CITYBUS



OEM

898056355251

Pos A B H C I N Q

NP-90812

ISUZU NLR



OEM

898012825151

Pos A B H C I N Q

NP-90901

MITSUBISHI-659



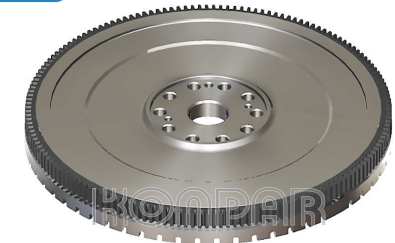
OEM

ME240067 - ME012549

Pos A B H C I N Q

NP-91102

DAF ESKİ MODEL (OLD MODEL)



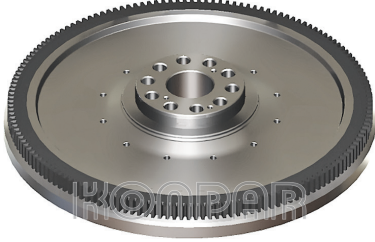
OEM

Pos A B H C I N Q

SCANIA – VOLVO

NP-91303

SCANIA 124 DSC 12 (430MM)



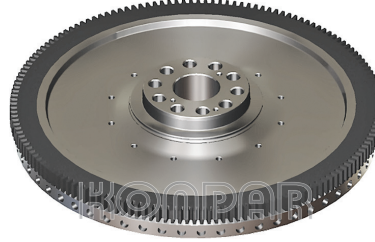
OEM

1388326 - 1465411

Pos A B H C I N Q

NP-91304

SCANIA 124 DSC 12 (430MM) 58 SENSOR



OEM

1487558

Pos A B H C I N Q

NP-91306

SCANIA 111-112 DSC 9-11 (420MM)



OEM

324640

Pos A B H C I N Q

NP-91308

SCANIA - 113 DSC 12-13 (420 MM)



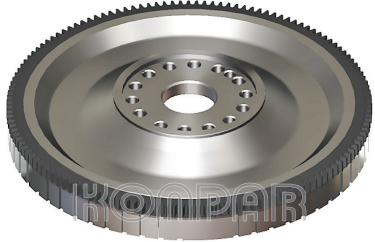
OEM

393151

Pos A B H C I N Q

NP-91403

VOLVO - FH 12



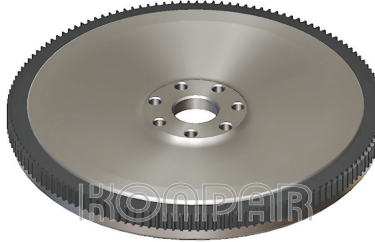
OEM

8170798 - 20729327

Pos A B H C I N Q

NP-91404

VOLVO (430 MM) 54 SENSOR



OEM

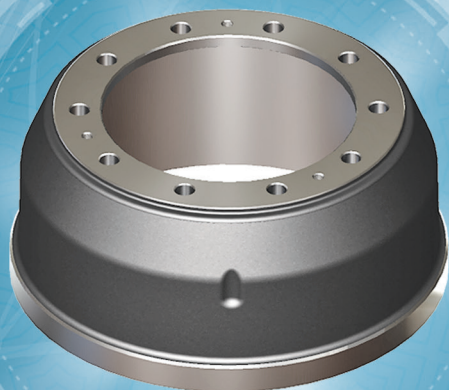
8170617

Pos A B H C I N Q



BRAKE DRUM

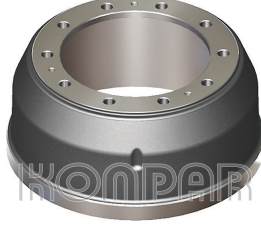
KAMPANA



MERCEDES

NP-0151

MERCEDES 0302 OTOBÜS
(BUS)



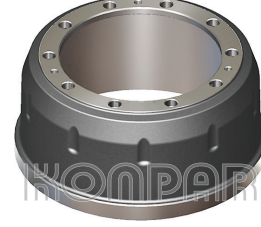
OEM

3544210001 - 3544210101 - 3544210301 - 3544210401

Pos	A	B	H	C	I	N	Q
F	418	155	240	298	335	10 3	23 M12

NP-0157

MERCEDES 0302S - 0303 V6 OTOBÜS
(BUS)



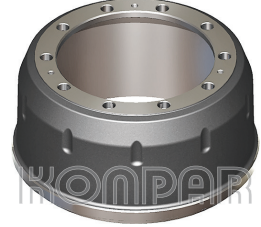
OEM

3054210001 - 3834230201

Pos	A	B	H	C	I	N	Q
F	410	175	228	298	335	10 2 2	23 13 M12

NP-0158

MERCEDES 0303 - V8 OTOBÜS 1924 - 2232 -
2517 DİNGİL - AXLE



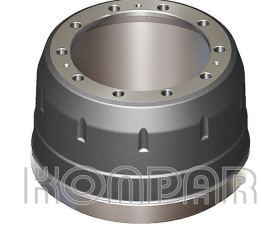
OEM

3014230301 - 3814230201 - 3864210001 - 3644210001

Pos	A	B	H	C	I	N	Q
F AXLE	410	174	238	298	335	10 3	23 M12

NP-0159

MERCEDES 0302S - 0303 - 0304 - 0305 - 0307 -
0309 V6 - V8 OTOBÜS (BUS)



OEM

3014230001 - 3014230801 - 3014230901 - 3014231201

Pos	A	B	H	C	I	N	Q
R	410	238	306	298	335	10 3	23 M12

NP-0160

MERCEDES 2626 - 2628 - 2632 - 2636



OEM

3464230001 - 3464230601

Pos	A	B	H	C	I	N	Q
R	410	172	270	298	335	10 5 3	23 24 M12

NP-0161

MERCEDES 2232 - 2622 - 2629 - 3031



OEM

3464230501 - 3464230101

Pos	A	B	H	C	I	N	Q
R	410	193	280	298	335	10 5 3	23 24 M12

NP-0162

MERCEDES 2521 - 2524



OEM

6244210201

Pos	A	B	H	C	I	N	Q
F	410	191	237	298	335	10 3	23 M12

NP-0163

MERCEDES 2521 - 2524 - 1626

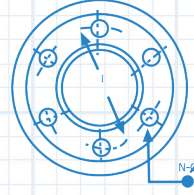
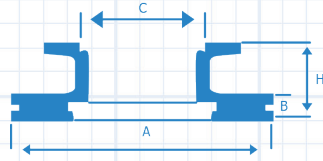


OEM

6174230101

Pos	A	B	H	C	I	N	Q
R	410	235	300	298	335	10 5 3	23 24 M12

A : Balata Çapı - Diameter Inside
 B : Balata Boyu - Brake Surface
 H : Komple Boy - Total Height
 C : Göbek Çapı - Hub Diameter
 I : Delik Merkezi - Distance Between Holes
 N : Delik Sayısı - Hole Quantity
 Q : Delik Çapı - Hole Diameter



F : FRONT
 R : REAR
 T : TRAILER

MERCEDES

NP-0164

MERCEDES 2521 - 2524 İLAVE DİNGİL 18BL - EXTRA AXLE



OEM

6174230201

Pos	A	B	H	C	I	N	Q
R	410	192	248	298	335	10 3	23 M12

NP-0165

MERCEDES 2517 - 2622 - 2232 - 2626



OEM

3054210401 - 3054210101

Pos	A	B	H	C	I	N	Q
F	410	167	212	298	335	10 2 3	23 13 M12

NP-0166

MERCEDES 2517 - 1617



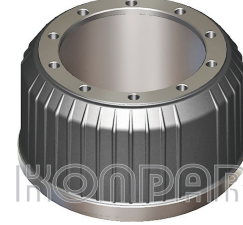
OEM

3854230301 - 3854230101

Pos	A	B	H	C	I	N	Q
R	410	192	248	298	335	10 3	23 M12

NP-0167

MERCEDES 2517 ÖZEL SOĞUTMALI (COOLED)



OEM

3854250301

Pos	A	B	H	C	I	N	Q
R	410	235	280	298	335	10	23

NP-0168

MERCEDES 1823 - 1831 - 1832 - ACTROS - AXOR



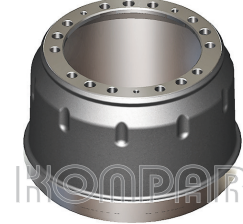
OEM

6584210001

Pos	A	B	H	C	I	N	Q
F	410	192	237	298	335	10 3	23 M12

NP-0169

MERCEDES 2521 - 2524 ÖZEL



OEM

Pos	A	B	H	C	I	N	Q
R	410	250	316	298	335	10 5 3	23 24 M12

NP-0170

MERCEDES 305 - 307 EUROPE 4044 MRC - ACHSE



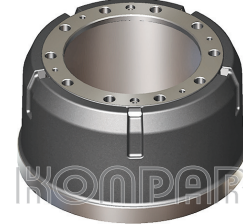
OEM

3054230301 - 3054230401 - 3054230701

Pos	A	B	H	C	I	N	Q
R	410	238	306	298	335	10 5 3	23 24 M12

NP-0173

0345 CONECTO EURO3



OEM

0004230701 - 8252019174 - 4462422131 - 33164098

Pos	A	B	H	C	I	N	Q
R	410	231	275.5	282	335	10 2 2	23 M16 M14

MERCEDES

NP-0174

0345 CONECTO EURO 3 SOĞUTMALI
(COOLED)

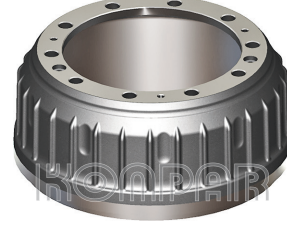


OEM

Pos	A	B	H	C	I	N	Q
R	410	231	275.5	282	335	10 2 2	23 M16 M14

NP-0175

2517-2622-2232-2626 SOĞUTMALI
(COOLED)



OEM

Pos	A	B	H	C	I	N	Q
F	410	167	212	298	335	10 2 3	23 13 M12

NP-0190

MB KISA PORYALI
SHORT DRUM WITH HUB



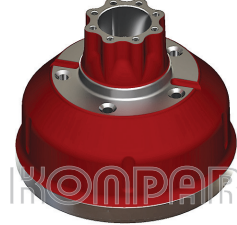
OEM

6843344404

Pos	A	B	H	C	I	N	Q
F	320	122	182		208	5	19

NP-0191

MB UZUN PORYALI
LONG DRUM WITH HUB



OEM

6843564102

Pos	A	B	H	C	I	N	Q
R	320	121	295		208	5 8	19 M12

NP-0194

MB 800 E.M. 181 MM
(OLD MODEL)



OEM

Pos	A	B	H	C	I	N	Q
F-R	325	118.5	181	160	205	6 3 3	18.5 M12 10.5/28

NP-0195

MB 800 Y.M. 200 MM
(NEW MODEL)



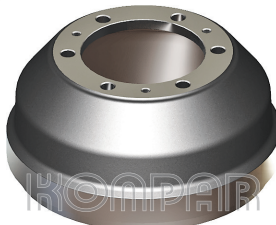
OEM

3713347204

Pos	A	B	H	C	I	N	Q
F-R	325	128	200	160	205	6 3 3	18.5 M12 10.5/28

NP-0196

MB 240

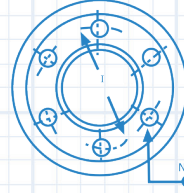
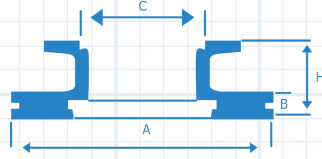


OEM

6884230001

Pos	A	B	H	C	I	N	Q
R	325	118	185	170	205	6 3	19 M12

A : Balata Çapı - Diameter Inside
 B : Balata Boyu - Brake Surface
 H : Komple Boy - Total Height
 C : Göbek Çapı - Hub Diameter
 I : Delik Merkezi - Distance Between Holes
 N : Delik Sayısı - Hole Quantity
 Q : Delik Çapı - Hole Diameter



F : FRONT
 R : REAR
 T : TRAILER

MAN - RENAULT

NP-0253

MAN 20.190 - 22.190 - 26.280 - 26.281 - 26.230
 SL200 - SG220



OEM

81501100226 - 81501100147 - 81501100108 - 81501100231

Pos	A	B	H	C	I	N	Q
F	410	167	212	298	335	10 2 3	23 13 M12

NP-0254

MAN 20.190 - 19.240 - 32.230 - 26.280



OEM

81501100102

Pos	A	B	H	C	I	N	Q
R	410	172	270	298	335	10 5 3	23 24 M12

NP-0255

MAN 22.190 - 26.240 - 30.190 - 26.281



OEM

81501100101 - 81501100134 - 81501103101

Pos	A	B	H	C	I	N	Q
R	410	193	280	298	335	10 5 3	23 24 M12

NP-0256

MAN SL200 - SG220 - SR240 - SR280
 SUPERMAN - 26.230 - 26.240 - 26.270 - 32.240



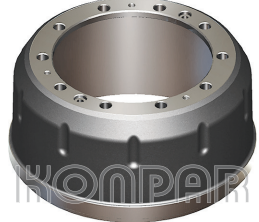
OEM

81501100144 - 81501100107 - 81501100104 - 81501103144
 81501109144

Pos	A	B	H	C	I	N	Q
R	410	235	300	298	335	10 5 3	23 24 M12

NP-0257

MAN 19.230 - 26.230 - SG 220 OTOBÜS
 (BUS)



OEM

81501100232 - 81501100214 - 81501100227

Pos	A	B	H	C	I	N	Q
F-R	410	186	232	298	335	10 2 3	23 13 M12

NP-0453

RENAULT MAGNUM



OEM

194435 - 192371 - 5000737768

Pos	A	B	H	C	I	N	Q
F-R	414	182.5	234	280.5	335	10 2 2	25 M14 13.5/22

NP-0454

RENAULT KAMPANA



OEM

Pos	A	B	H	C	I	N	Q
F	414	175	222	281	335	10 2 2	25 13/22 M16

NP-0455

RENAULT PREMIUM



OEM

5010098949

Pos	A	B	H	C	I	N	Q
R	414	230	276.5	281	335	10 2 2	25 13/22 M16

IVECO - MITSUBISHI

NP-0552

IVECO EURO TRAKKER- EUROTECH



OEM

7172329

Pos	A	B	H	C	I	N	Q
F	410	194	249	285	335	10 2 2	23 12 M12

NP-0553

IVECO EURO TRAKKER



OEM

42118427 - 42102583

Pos	A	B	H	C	I	N	Q
R	410	220	283	285	335	10 2 2	23 12.5 M12

NP-0556

IVECO EUROSTAR



OEM

7172079 - 7183047

Pos	A	B	H	C	I	N	Q
R	410	201	258	285	335	10 2 2	23 M12 32/12.5

NP-0561

EUROCARGO 250 E 24



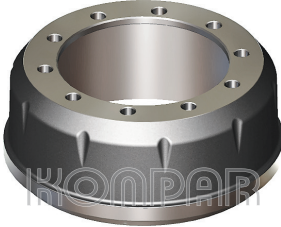
OEM

1740003-E

Pos	A	B	H	C	I	N	Q
R	395	198	276.5	285	335	10 2 2	23 M12 11

NP-0953

MITSUBISHI MARATON Y.M. PRENSES ÖN
(NEW MODEL / FRONT)



OEM

MC 826885

Pos	A	B	H	C	I	N	Q
F	410	170	200	290	335	10	25

NP-0954

MITSUBISHI MARATON Y.M. PRENSES ARKA
(NEW MODEL / REAR)



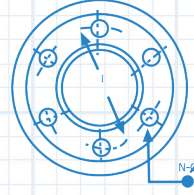
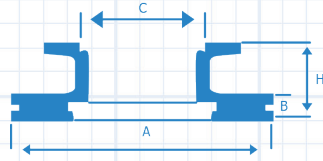
OEM

MC828296

Pos	A	B	H	C	I	N	Q
R	410	230	256	290	335	10	25

konpar
Brake Drums

A : Balata apı - Diameter Inside
B : Balata Boyu - Brake Surface
H : Komple Boy - Total Height
C : Gbek apı - Hub Diameter
I : Delik Merkezi - Distance Between Holes
N : Delik Sayısı - Hole Quantity
Q : Delik apı - Hole Diameter



F : FRONT
R : REAR
T : TRAILER

BPW

NP-1048

BPW 7.5 CM UZUN KUŐAK
(LONG BELT)



OEM
310677630

Pos	A	B	H	C	I	N	Q
T	420	224	308	290	335	10	23

NP-1049

BPW - 285MM



OEM

Pos	A	B	H	C	I	N	Q
T	420	221	280	290	335	10	23

NP-1050

BPW BRAKE DRUM



OEM
310677630

Pos	A	B	H	C	I	N	Q
T	420	228	297	290	335	10	23

NP-1051

BPW - 308MM

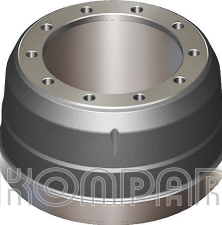


OEM
0310677110

Pos	A	B	H	C	I	N	Q
T	420	224	308	290	335	10	23

NP-1052

DOSTAŐ TRAILER



OEM
03.106.77.52.0 - 03.109.77.72.0

Pos	A	B	H	C	I	N	Q
T	420	225	284	290	335	10	23

NP-1053

BPW KISA AKMA

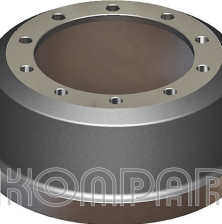


OEM
03.109.67.19.0

Pos	A	B	H	C	I	N	Q
T	420	204	226	290	335	10	23

NP-1054

BPW KISA SOMUNLU



OEM
03.106.67.62.0 - 03.109.67.13.0 - 03.109.67.82.0

Pos	A	B	H	C	I	N	Q
T	420	200	226	290	335	10	23

NP-1057

BPW UZUN AKMA



OEM
03.109.77.17.0

Pos	A	B	H	C	I	N	Q
T	420	220	258	290	335	10	23

BPW - SAF - FRUEHAUF

NP-1058

BPW UZUN SOMUNLU



OEM

03.109.77.17.0

Pos	A	B	H	C	I	N	Q
T	420	220	258	290	335	10	23

NP-1059

BPW İSPİT 6 DELİK
(HOLES)



OEM

Pos	A	B	H	C	I	N	Q
T	420	220	258	290	335	6	20

NP-1065

OSMAN KOÇ DİNGİL 6 DELİK
(HOLES AXLE)



OEM

Pos	A	B	H	C	I	N	Q
T	420	231.5	262	290	335	6	20

NP-1066

OSMAN KOÇ K-1 10 DELİK
(HOLES)



OEM

Pos	A	B	H	C	I	N	Q
T	420	231	262	290	335	10	24

NP-1071

SAF TRAILER



OEM

1.064.0260.01 - 1.064.0260.02 - 1.064.0260.00

Pos	A	B	H	C	I	N	Q
T	420	205	227	300	335	10	23

NP-1072

SAF FREN KAMPANASI



OEM

1064012800

Pos	A	B	H	C	I	N	Q
T	420	213	256	288	335	10	23

NP-1085

FRUEHAUF



OEM

AJB0465002 - M003176

Pos	A	B	H	C	I	N	Q
T	420	213	256	288	335	10 2 2	26 12/26 M12

NP-1092

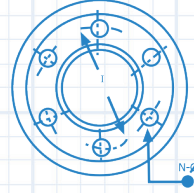
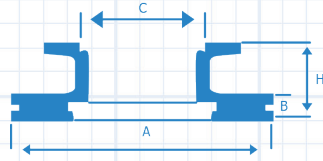
42 X 22 PILOT



OEM

Pos	A	B	H	C	I	N	Q
T	420	230	280	280	335	10 3	23 12.5/32

A : Balata apı - Diameter Inside
B : Balata Boyu - Brake Surface
H : Komple Boy - Total Height
C : Gbek apı - Hub Diameter
I : Delik Merkezi - Distance Between Holes
N : Delik Sayısı - Hole Quantity
Q : Delik apı - Hole Diameter



F : FRONT
R : REAR
T : TRAILER

OTOYOL - DAF

NP-1093

42 X 20 PILOT



OEM

Pos	A	B	H	C	I	N	Q
T	420	212	260	280	335	10 2 3	23 12.5/32

NP-1095

OTOYOL YORK 265 MM



OEM

Pos	A	B	H	C	I	N	Q
T	394	230	265	282	335	10 2 2	23 28/12.5 M14

NP-1096

OTOYOL YORK 274 MM



OEM

Pos	A	B	H	C	I	N	Q
T	394	234	274	282	335	10 2 2	23 28/12.5 M14

NP-1097

OTOYOL YORK 280 MM



OEM

Pos	A	B	H	C	I	N	Q
T	394	240	280	282	335	10 2 2	23 28/12.5 M14

NP-1153

DAF F85 - F95 N
(FRONT)



OEM

284620 - 1233462 - 094903 - 595225

Pos	A	B	H	C	I	N	Q
F	420	171	228	285	335	10 4 2	23 28/13.5 M12

NP-1154

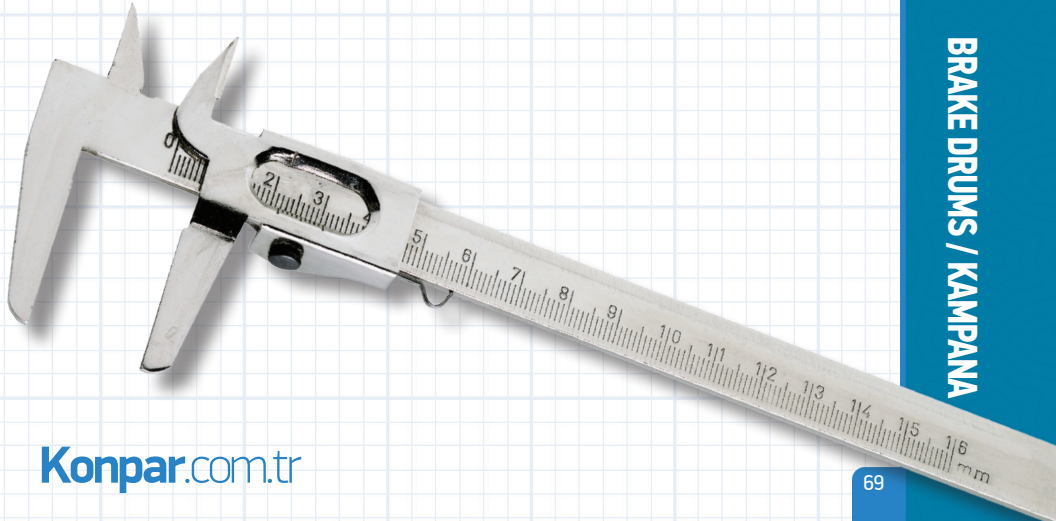
DAF F85 - F95 ARKA
(REAR)



OEM

365579 - 754397

Pos	A	B	H	C	I	N	Q
R	420	216	288	285	335	10 2 2	24 14/28 M12



Konpar.com.tr

SETRA - SCANIA

NP-1251

SETRA KISA
(SHORT)



OEM

Pos	A	B	H	C	I	N	Q
F	420	192	261	290	335	10 2	21 M16

NP-1252

SETRA UZUN
(LONG)



OEM

179252011411 - 179252011311

Pos	A	B	H	C	I	N	Q
R	410	230	281	290	335	10 2	23 M16

NP-1253

SETRA DİNGİL
(AXLE)



OEM

179241111406

Pos	A	B	H	C	I	N	Q
R	410	170	235	290	335	10 2	23 M16

NP-1351

SCANIA 112-124 ESKİ TİP
(OLD TYPE)



OEM

360570 - 285894

Pos	A	B	H	C	I	N	Q
F	413	190	263	295	335	10 3	23 M12

NP-1353

SCANIA 113 ÖN
(FRONT)



OEM

392390

Pos	A	B	H	C	I	N	Q
F	413	190	253	295	335	10 2 3	23.5 13 M12

NP-1354

SCANIA 113 ARKA
(REAR)



OEM

293543 - 342880 - 360573 - 1385893 - 1414435

Pos	A	B	H	C	I	N	Q
R	413	270	320	295	335	10 3 2	23.5 M12 13

NP-1355

SCANIA 113-93-94-114

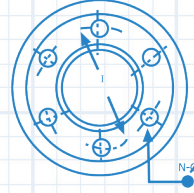
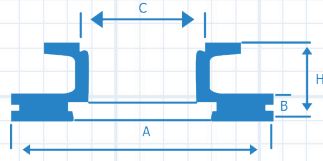


OEM

1361331 - 1414153 - 1333117

Pos	A	B	H	C	I	N	Q
F	413	213	275	295	335	10 3	23 M12

A : Balata apı - Diameter Inside
 B : Balata Boyu - Brake Surface
 H : Komple Boy - Total Height
 C : Gbek apı - Hub Diameter
 I : Delik Merkezi - Distance Between Holes
 N : Delik Sayısı - Hole Quantity
 Q : Delik apı - Hole Diameter



F : FRONT
 R : REAR
 T : TRAILER

VOLVO

NP-1452

VOLVO F10-F12 ESKİ MODEL
 (OLD MODEL)



OEM

366866

Pos	A	B	H	C	I	N	Q
R	395	216	289	282	335	10 2 2	28 13.5 M12

NP-1454

VOLVO F10-FL10 POWER



OEM

1599009

Pos	A	B	H	C	I	N	Q
F	410	195	262	282	335	10 2 2	28 13 M20

NP-1456

VOLVO F10-FL10-N10



OEM

1599011

Pos	A	B	H	C	I	N	Q
R	410	215	294	282	335	10 2 2	28 13 M20

NP-1457

VOLVO FL12-F12-N12-FH16 KANALLI
 (SPLINED)



OEM

1599012

Pos	A	B	H	C	I	N	Q
R	410	230	307	282	335	10 2 2	28 18 M20

NP-1458

VOLVO F10-FL10-N10 KANALLI
 (SPLINED)



OEM

Pos	A	B	H	C	I	N	Q
R	410	218	293	282	335	10 2 2	28 13 M20

NP-1461

VOLVO FM-9



OEM

1075306 - 3171744

Pos	A	B	H	C	I	N	Q
F	410	200	260	282	335	10 2 2	28 18 M20

NP-1462

VOLVO FM-9 EKİCİ
 (REAR)



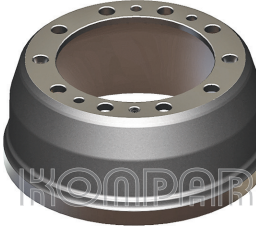
OEM

1075310 - 3171748

Pos	A	B	H	C	I	N	Q
R	410	225	307	282	335	10 2 2	28 18 M20

NP-1463

VOLVO FM-9 DİNGİL
 (AXLE)



OEM

1075311 - 1599013

Pos	A	B	H	C	I	N	Q
R	410	143	207	282	335	10 2 2	28 18 M20

VOLVO - NEOPLAN

NP-1465

VOLVO FH-12



OEM

1599968

Pos	A	B	H	C	I	N	Q
F	410	195	218.5	290	335	6	16

NP-1466

VOLVO FH12 ÇEKİCİ DİNGİL
(REAR / AXLE)



OEM

1075309 - 3171747

Pos	A	B	H	C	I	N	Q
R	410	210	294	282	335	10 2 2	28 18 M20

NP-1471

VOLVO OTOBÜS ÖN
(BUS / FRONT)



OEM

1134817

Pos	A	B	H	C	I	N	Q
F	394	219	269	282	335	10 2	28 M12

NP-1472

VOLVO OTOBÜS ARKA
(BUS / REAR)



OEM

1590313 - 1134818

Pos	A	B	H	C	I	N	Q
R	394	265	314	282	335	10 2	28 M12

NP-1553

NEOPLAN



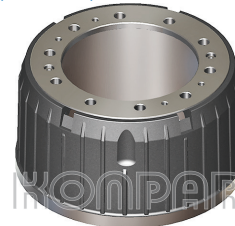
OEM

0004230701 - 8252019174 - 4462422131 - 33164098

Pos	A	B	H	C	I	N	Q
R	410	231	275.5	282	335	10 2 2	23 M10 M14

NP-1554

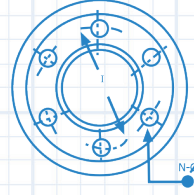
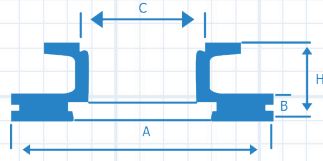
NEOPLAN SOĞUTMALI
(COOLED)



OEM

Pos	A	B	H	C	I	N	Q
R	410	231	275.5	282	335	10 2 2	23 M16 M14

A : Balata Çapı - Diameter Inside
 B : Balata Boyu - Brake Surface
 H : Komple Boy - Total Height
 C : Göbek Çapı - Hub Diameter
 I : Delik Merkezi - Distance Between Holes
 N : Delik Sayısı - Hole Quantity
 Q : Delik Çapı - Hole Diameter



F : FRONT
 R : REAR
 T : TRAILER

FATİH - BMC

NP-1651

FATİH-BMC 16222 - 16225



OEM
 K8C1008

Pos	A	B	H	C	I	N	Q
F-R	394	194	236	290	335	10 2 2	24 28/12 M12

NP-1653

FATİH-BMC 170.25



OEM
 5K56770

Pos	A	B	H	C	I	N	Q
F-R	410	211	258	290	335	10 2 3	23.5 11/23.5 M14

NP-1655

FATİH-BMC 20026 INTERCOOL İNCE FLANŞ
 (THIN FLANGE)



OEM
 5K18782

Pos	A	B	H	C	I	N	Q
F-R	410	211	258	285	335	10 2 3	28 28/11 M14

NP-1656

FATİH-BMC 20026 INTERCOOL KALIN FLANŞ
 (THICK FLANGE)



OEM
 5K88968 - 5K59690

Pos	A	B	H	C	I	N	Q
F-R	410	211	264	285	335	10 2 3	28 28/11 M14

NP-1657

FATİH-BMC 20026 INTERCOOL KALIN FLANŞ
 SOĞUTMALI (COOLED / THICK FLANGE)



OEM
 5K88968

Pos	A	B	H	C	I	N	Q
F-R	410	211	264	285	335	10 2 2	28 28/11 M14

NP-1658

FATİH-BMC 22026 DEV FATİH İNCE FLANŞ
 (THIN FLANGE)



OEM
 5K16448

Pos	A	B	H	C	I	N	Q
F-R	410	213	272	285	335	10 2 3	28 28/11 M14

NP-1659

FATİH-BMC 22026 DEV FATİH KALIN FLANŞ
 (THICK FLANGE)

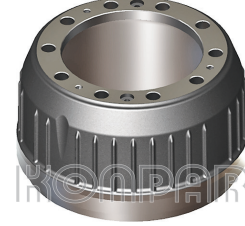


OEM
 5K87972

Pos	A	B	H	C	I	N	Q
F-R	410	220	272	285	335	10 2 3	28 28/11 M14

NP-1660

FATİH-BMC 22026 DEV FATİH KALIN FLANŞ
 (THICK FLANGE)



OEM
 5K87972 - 5K59565

Pos	A	B	H	C	I	N	Q
F-R	410	214	272	285	335	10 2 3	28 28/11 M14

FATİH - BMC

NP-1661

FATİH-BMC 27026 DEV FATİH SOĞUTMALI
(COOLED)



OEM

5K60512

Pos	A	B	H	C	I	N	Q
F-R	410	230	285	285	335	10 2 3	28 28/11 M14

NP-1662

FATİH-BMC 620 - 617 PROFESYONEL



OEM

5K88968

Pos	A	B	H	C	I	N	Q
F-R	410	211	264	285	335	10 2 2	28 28/11 M14

NP-1663

FATİH-BMC 822 - 827 PROFESYONEL



OEM

5K87972

Pos	A	B	H	C	I	N	Q
F-R	410	214	272	285	335	10 2 3	28 28/11 M14

NP-1664

FATİH-BMC 827 PROFESYONEL YENİ MODEL
(NEW MODEL)



OEM

5K60512

Pos	A	B	H	C	I	N	Q
F-R	410	230	285	285	335	10 2 3	28 28/11 M14

NP-1665

FATİH-BMC 22017 BELDE OTOBÜS
(BUS)



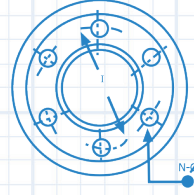
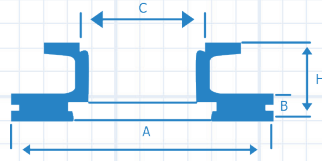
OEM

5K87972

Pos	A	B	H	C	I	N	Q
F-R	410	214	272	285	335	10 2 3	28 28/11 M14

Bazı durumlarda
hızlanmaktan
daha çok
durabilmek
önemlidir

A : Balata Çapı - Diameter Inside
 B : Balata Boyu - Brake Surface
 H : Komple Boy - Total Height
 C : Göbek Çapı - Hub Diameter
 I : Delik Merkezi - Distance Between Holes
 N : Delik Sayısı - Hole Quantity
 Q : Delik Çapı - Hole Diameter



F : FRONT
 R : REAR
 T : TRAILER

FORD

NP-1751

FORD 2014 - 2517 TURBO CARGO
 (FRONT)



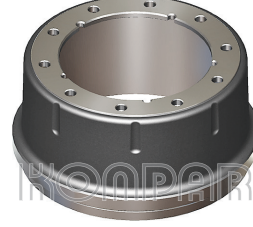
OEM

6126495 - 82DB1125AA

Pos	A	B	H	C	I	N	Q
F	394	229.5	260.5	281	335	10 4	25 32/14

NP-1752

FORD 2014- 2517 TURBO CARGO ARKA
 (REAR)



OEM

81DB1126BB - 1502024

Pos	A	B	H	C	I	N	Q
R	394	194	226	279.5	335	10	20

NP-1754

FORD 2520 CARGO INTERCOOL ÖN
 (FRONT)



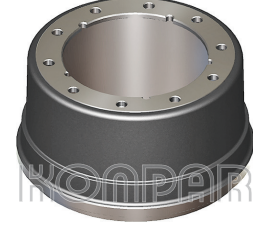
OEM

85DB1125AB

Pos	A	B	H	C	I	N	Q
F	394	243	274	281	335	10 4 4	25 32/14 M14

NP-1755

FORD 2520 CARGO INTERCOOL ARKA
 (REAR)



OEM

85DB1126AA

Pos	A	B	H	C	I	N	Q
R	394	215	250.5	279.5	335	10	20

NP-1757

FORD 3227 CARGO ŞAHİN BAKIŞLI



OEM

85DB1125AB

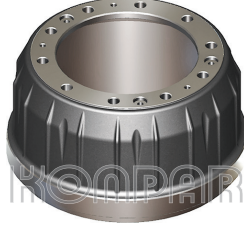
Pos	A	B	H	C	I	N	Q
R	394	243	274	281	335	10 4 4	25 32/14 M14



DODGE - SANOS - HOVA - NISSAN

NP-1854

DODGE CHRYSLER AS 900-950



OEM

4833T - 20949PE

Pos	A	B	H	C	I	N	Q
R	420	190	260	280	335	10 3 3	23 28/14 M12

NP-1856

DODGE CHRYSLER AS 26.260-AS 950



OEM

20949PE - 23504T

Pos	A	B	H	C	I	N	Q
R	420	190	260	286	335	10 3 3	23 28/14 M12

NP-1857

DODGE CHRYSLER AS 26235-AS 32260 ÖN
(FRONT)



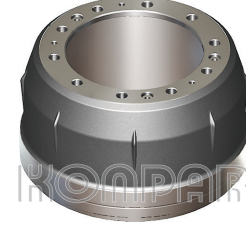
OEM

16724PE - 23503

Pos	A	B	H	C	I	N	Q
F	420	190	245	286	335	10 3 3	23 M12 14

NP-1858

DODGE CHRYSLER AS 26235-AS 32260 ARKA
(REAR)



OEM

23799T - 24534TP

Pos	A	B	H	C	I	N	Q
R	420	215	282	286	335	10 3 3	23 14 M12

NP-5020

SANOS



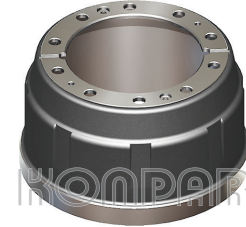
OEM

K007113341031

Pos	A	B	H	C	I	N	Q
R	420	195	273	282	335	10 2 4	23 13.5/22 M12

NP-5025

HOVA



OEM

Pos	A	B	H	C	I	N	Q
R	420	200	278	282	335	10 2 2	24 M10 12

NP-5028

NISSAN



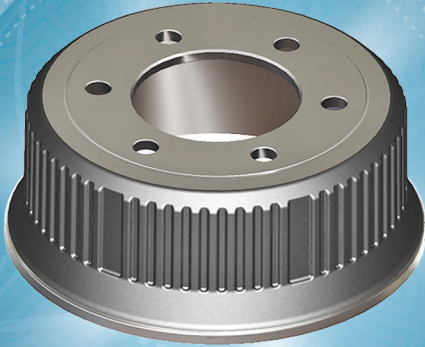
OEM

060415Y

Pos	A	B	H	C	I	N	Q
T	410	229	280	282	335	10 3 5	23 M12 11

SMALL BRAKE DRUM

KÜÇÜK KAMPANA



FIAT IVECO

NP-0501

IVECO 50 NC ESKİ MODEL ÖN
(FRONT / OLD MODEL)



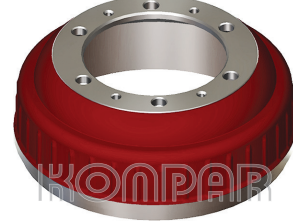
OEM

8547081 - 8546995 - 8546956

Pos	A	B	H	C	I	N	Q
F	324	86.5	113	248	270	8 2	12.5 8.5

NP-0502

IVECO 50 NC ESKİ MODEL ARKA
(REAR / OLD MODEL)



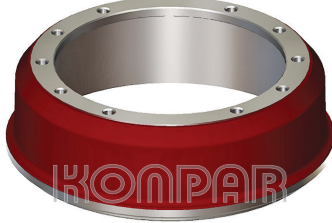
OEM

8546971 - 8546957 - 8529683

Pos	A	B	H	C	I	N	Q
R	325	88	137	161	205	6 2 2	18.5 10.5 M10

NP-0503

IVECO 50 NC ORTA MODEL
(MIDDLE)



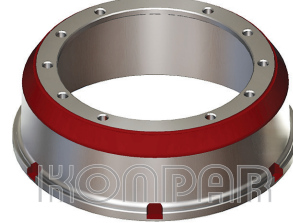
OEM

7160033 - 4707533

Pos	A	B	H	C	I	N	Q
F-R	325	88	114	255	280	6 4	12.5 M12

NP-0505

IVECO 50 S.Y.M. M-23 65/9
(NEW MODEL)



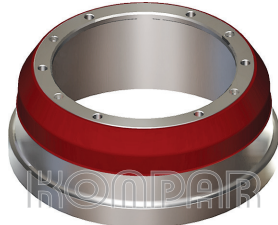
OEM

4707532 - 7160035 - 7165361

Pos	A	B	H	C	I	N	Q
F-R	325	109	135	255	280	6 4	12.5 M12

NP-0506

IVECO 85-12 / 120-14



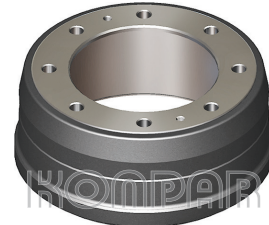
OEM

7160113 - 7165564 - 4715519

Pos	A	B	H	C	I	N	Q
R	325	128	158	255	280	6 4	12.5 M12

NP-0514

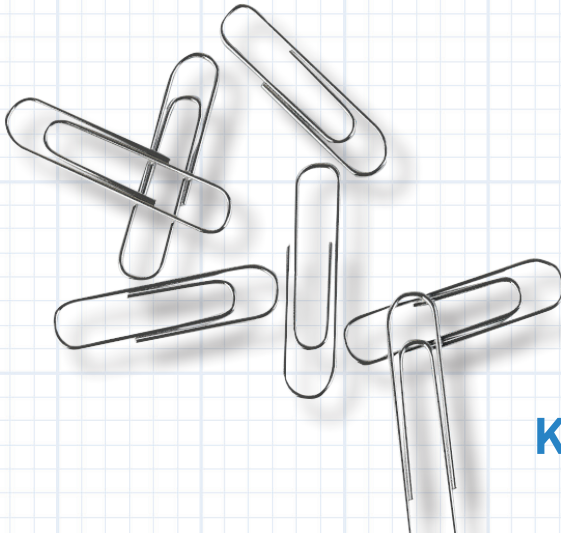
IVECO EURO CITY

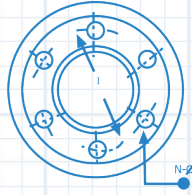
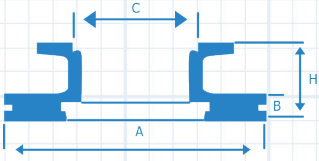


OEM

7173970

Pos	A	B	H	C	I	N	Q
R	325	132	164	215	275	8 2	20 M10





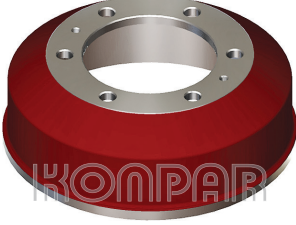
A : Balata Çapı - Diameter Inside
 B : Balata Boyu - Brake Surface
 H : Komple Boy - Total Height
 C : Göbek Çapı - Hub Diameter
 I : Delik Merkezi - Distance Between Holes
 N : Delik Sayısı - Hole Quantity
 Q : Delik Çapı - Hole Diameter

F : FRONT
 R : REAR
 T : TRAILER

MAGIRUS - OTOKAR

NP-0601

MAGIRUS E.M.
(OLD MODEL)



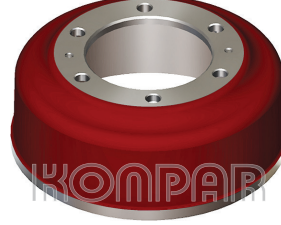
OEM

1.100.00.5021

Pos	A	B	H	C	I	N	Q
F-R	325	87	124	163	205	6 2	19 M10

NP-0602

MAGIRUS Y.M.
(NEW MODEL)



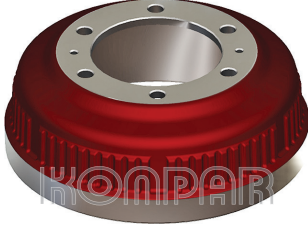
OEM

12B1705021AA

Pos	A	B	H	C	I	N	Q
F-R	325	112	145.5	163	205	6 2	19 M10

NP-0603

MAGIRUS Y.M. SOĞUTMALI
(NEW MODEL - COOLED)



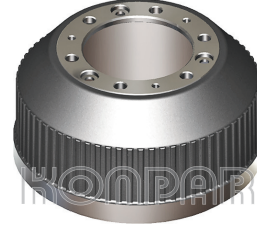
OEM

12B1705021AA

Pos	A	B	H	C	I	N	Q
F-R	325	110	145.5	163	205	6 2	19 M10

NP-0606

SULTAN E.M.
(OLD MODEL)



OEM

13C15-05021AD

Pos	A	B	H	C	I	N	Q
F-R	324.5	141	205	170	205	6 3 3	18.5 M10 13.5

NP-0607

SULTAN ORTA MODEL
(MIDDLE)



OEM

13C0005021AD

Pos	A	B	H	C	I	N	Q
F-R	324.5	130	200	170	205	6 3 3	18.5 M10 13.5

NP-0608

SULTAN Y.M.
(NEW MODEL)



OEM

13C00050109AB

Pos	A	B	H	C	I	N	Q
F-R	324.5	126	192	170	205	6 3 3	18.5 M10 13.5

Leading the change for a sustainable success

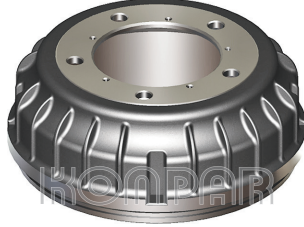
Konpar.com.tr

SMALL BRAKE DRUMS / KÜÇÜK KAMPANA

ISUZU

NP-0801

ISUZU NPR



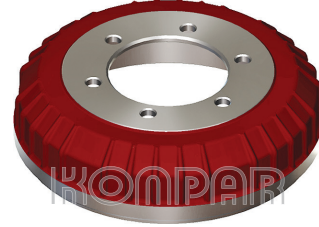
OEM

428107376107 - 894.121.428.1-01 - 894121428107

Pos	A	B	H	C	I	N	Q
F-R	319	90	145	156	203	5 5	19.5 M6

NP-0802

ISUZU NKR



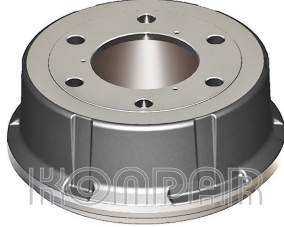
OEM

542.315.037.2 - 51

Pos	A	B	H	C	I	N	Q
F-R	299	66	97	132	170	6 1	15 6

NP-0803

ISUZU ŞAMPİYON
(CHAMPION)



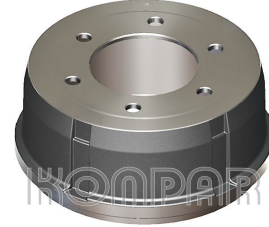
OEM

897.081.218.1 - 01

Pos	A	B	H	C	I	N	Q
F-R	319	116	157	156	222	6 3	23.5 M6

NP-0804

ISUZU NQR TURKUAZ



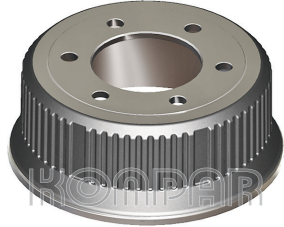
OEM

897.102.001.1 - 51 - 897.188.016.0 - 51

Pos	A	B	H	C	I	N	Q
F-R	319	135	166	156	222	6	23.5

NP-0805

ISUZU TURKUAZ Y.M.
(NEW MODEL)



OEM

277.772.158.0 - 01

Pos	A	B	H	C	I	N	Q
F-R	324.5	138	166	156	222	6	23.5

NP-0806

ISUZU NOR TURKUAZ SOĞUTMALI
(COOLED)



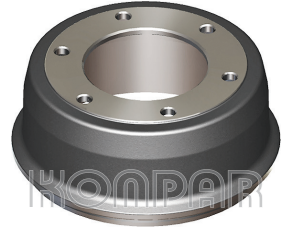
OEM

897102001 - 2 AV

Pos	A	B	H	C	I	N	Q
F-R	320	133	164.50	156	222	6	23.5

NP-0807

ISUZU NKR55
(LOW)



OEM

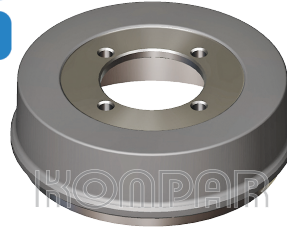
897.169.8062.01

Pos	A	B	H	C	I	N	Q
R	239	276	122	132	184	6	16.5

NP-0808

ISUZU NPR - ŞAMPİYON EL FREN KAMPANASI
(NPR-CHAMPION HAND BRAKE DRUM)

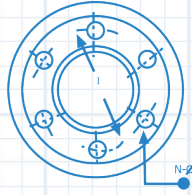
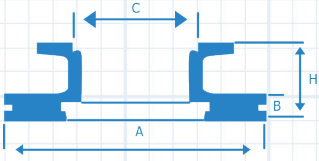
NP-0809



OEM

8941010571 - 8970339891

Pos	A	B	H	C	I	N	Q
	191	58	69	80	101	4	10.5
	191	58	69	80	101	4	12.5



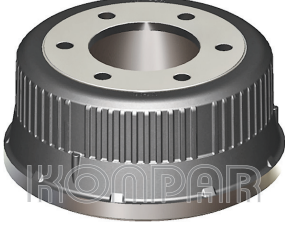
A : Balata Çapı - Diameter Inside
 B : Balata Boyu - Brake Surface
 H : Komple Boy - Total Height
 C : Göbek Çapı - Hub Diameter
 I : Delik Merkezi - Distance Between Holes
 N : Delik Sayısı - Hole Quantity
 Q : Delik Çapı - Hole Diameter

F : FRONT
 R : REAR
 T : TRAILER

ISUZU

NP-0811

ISUZU EURO 4



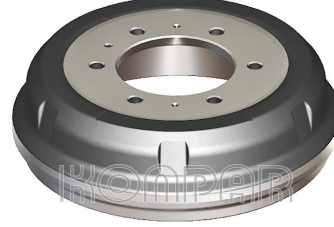
OEM

387004990001

Pos	A	B	H	C	I	N	Q
R	324.5	162	188	156	222	6	23.5

NP-0812

ISUZU NKR 55 E.M.
(OLD MODEL)



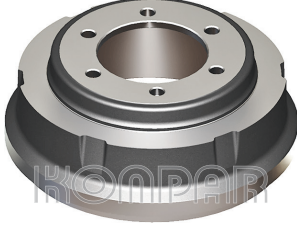
OEM

897085071

Pos	A	B	H	C	I	N	Q
F	299	85	102.5	132	170	2 6 1	M6 15 6.5

NP-0813

ISUZU NKR 55 (LOW) Y.M.
(NEW MODEL)



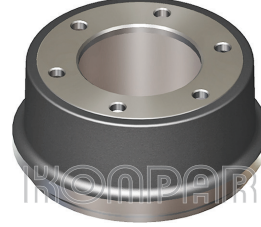
OEM

897358857001

Pos	A	B	H	C	I	N	Q
F	299	87	139	132	170	6	16.5

NP-0816

ISUZU NKR 55 E.M. ÇİFT TEKER
(OLD MODEL / TWIN WHEEL)



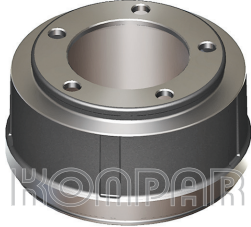
OEM

542315041201

Pos	A	B	H	C	I	N	Q
R	228	89	129	132	184	6	16.5

NP-0824

ISUZU - NLR 85 ÖN
(FRONT)



OEM

897094434201

Pos	A	B	H	C	I	N	Q
F	300.5	91.5	142	156	203	5	21

NP-0825

ISUZU - NLR 85 ARKA
(REAR)



OEM

897184245201

Pos	A	B	H	C	I	N	Q
R	287	92	155	156	205	5	22

NP-5058

ISUZU - OTOBÜS E.M. ÖN
(OLD MODEL / FRONT)



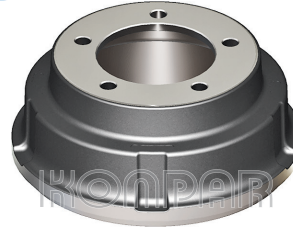
OEM

8970347703

Pos	A	B	H	C	I	N	Q
F	320	90	144	156	203	5	22

NP-5059

ISUZU - OTOBÜS E.M. ARKA
(OLD MODEL / -REAR)



OEM

8943856503

Pos	A	B	H	C	I	N	Q
R	320	95	163	156	203	5	22

ISUZU - MITSUBISHI - BMC

NP-5060

ISUZU - 5 TON ÖN
(FRONT)



OEM

Pos	A	B	H	C	I	N	Q
F	300.5	91.5	142	156	203	5	21

NP-0901

MITSUBISHI 659 PRESTIGE



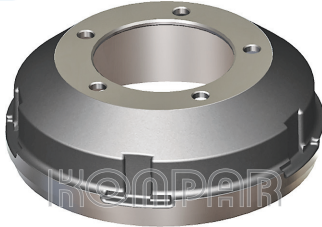
OEM

MK 321338

Pos	A	B	H	C	I	N	Q
F-R	320	122	155	175	222	6 6	20 M8

NP-0902

MITSUBISHI 635



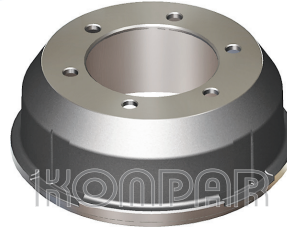
OEM

MC 838284

Pos	A	B	H	C	I	N	Q
F-R	320	86	131	165	208	5	19

NP-0903

MITSUBISHI 449



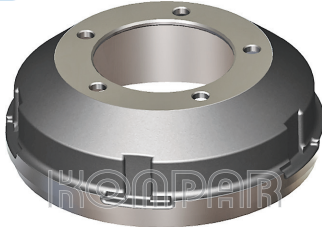
OEM

MC 112024

Pos	A	B	H	C	I	N	Q
F-R	320	105	155	175	222	6	20

NP-0904

MITSUBISHI 444



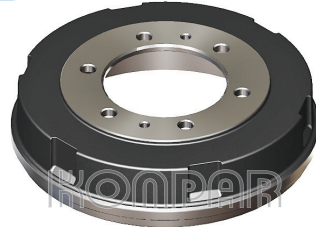
OEM

MB 060504

Pos	A	B	H	C	I	N	Q
F-R	320	86	131	165	208	5	19

NP-0905

MITSUBISHI 304-515 ÖN
(FRONT)



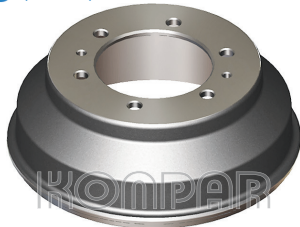
OEM

MB 060500

Pos	A	B	H	C	I	N	Q
F	300	75	91	140	180	6 2	16.5 M10

NP-0906

MITSUBISHI 304-515 ARKA
(REAR)



OEM

MT 327119

Pos	A	B	H	C	I	N	Q
R	300	72	130	140	180	6 2	16.5 M10

NP-1614

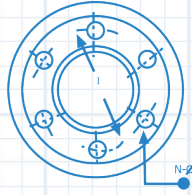
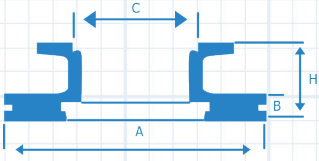
BMC 3000



OEM

5M66346

Pos	A	B	H	C	I	N	Q
R	280	74	144	135	180	6 3	18.5 M10



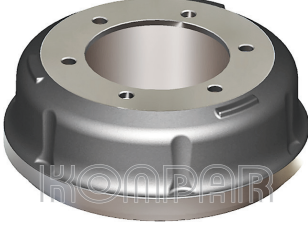
A : Balata Çapı - Diameter Inside
 B : Balata Boyu - Brake Surface
 H : Komple Boy - Total Height
 C : Göbek Çapı - Hub Diameter
 I : Delik Merkezi - Distance Between Holes
 N : Delik Sayısı - Hole Quantity
 Q : Delik Çapı - Hole Diameter

F : FRONT
 R : REAR
 T : TRAILER

HYUNDAI - NDR - MAZDA

NP-5040

HYUNDAI



OEM

Pos	A	B	H	C	I	N	Q
F-R	320	116	142	179	222	6	19

NP-5054

NDR - ÖN
(FRONT)



OEM

Pos	A	B	H	C	I	N	Q
F	300	88.5	157	156	203	5	20

NP-5055

NDR - ARKA
(REAR)

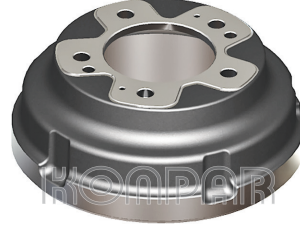


OEM

Pos	A	B	H	C	I	N	Q
R	300	192	157	156	203	5	22

NP-5063

MAZDA



OEM

Pos	A	B	H	C	I	N	Q
F-R	320	86.5	150	145	203	5 2	22.5 M8 16.5



Değişime öncülük ediyoruz

HASHIMBUS - DAIHATSU - TOYOTA

NP-5065

HASHIMBUS



OEM

Pos	A	B	H	C	I	N	Q
F-R	319	95.5	179	172	222	6 2	22.5 M8 9/25

NP-5066

DAIHATSU

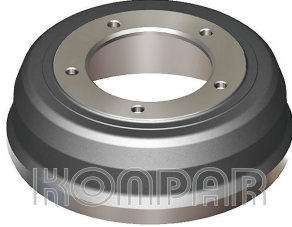


OEM

Pos	A	B	H	C	I	N	Q
F-R	320	89	130	144	203	5	17

NP-5092

TOYOTA

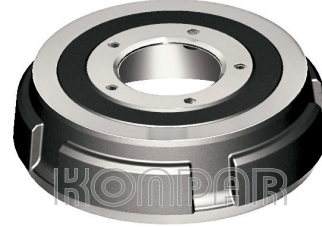


OEM

Pos	A	B	H	C	I	N	Q
R	320	99	127.5	160	203	5	15

NP-0841

TOYOTA



OEM

Pos	A	B	H	C	I	N	Q
F	320	99.5	115	126	167	5	M14 1.5



Providing
fast and
innovative
products
and services

KONPAR



YENİ ÜRÜNLERİMİZ

TAKİP ETMEK VE
ÜRÜNLERİMİZE ÇEVİRİMİÇİ
OLARAK GÖZATMAK İÇİN
QR KODUNU OKUTUN



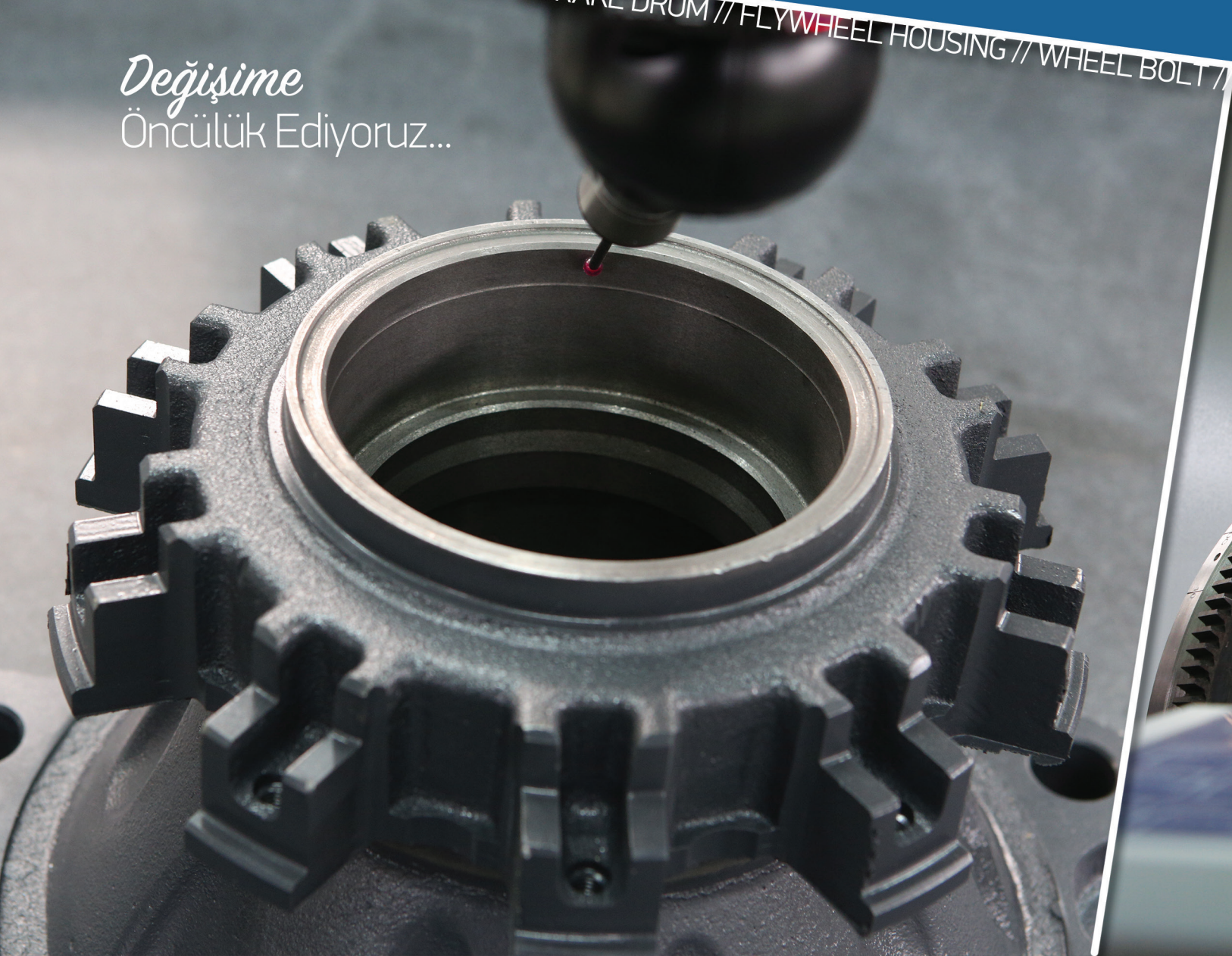


Konpar.com.tr

Hızlı ve Yenilikçi
Ürün ve Hizmetler
sunuyoruz

BRAKE DISC // WHEEL HUB // FLYWHEEL // BRAKE DRUM // FLYWHEEL HOUSING // WHEEL BOLT //

Değişime
Öncülük Ediyoruz...





Mitutoyo *CRYSTA-Apex S*

CALIPER REPAIR KIT // DISC BRAKE PAD // AIR SPRING // BRAKE PARTS // BRAKE DISC // WHEEL HUB





 konpar.com.tr  /Konpar  /KonparNews

WHEEL HUB // BRAKE DISC // FLYWHEEL // BRAKE DRUM // FLYWHEEL HOUSING // WHEEL BOLT // BRAKE PARTS